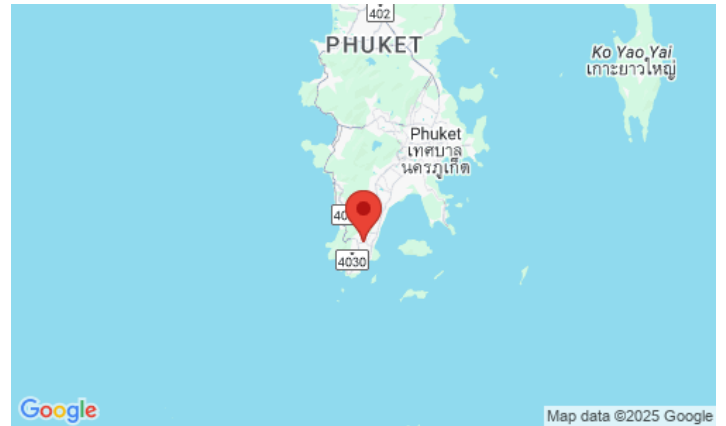


ID0120 STYLISH 1-BEDROOM APARTMENTS, WITH POOL VIEW IN PALM BREEZE PROJECT, ON NAI HARN BEACH

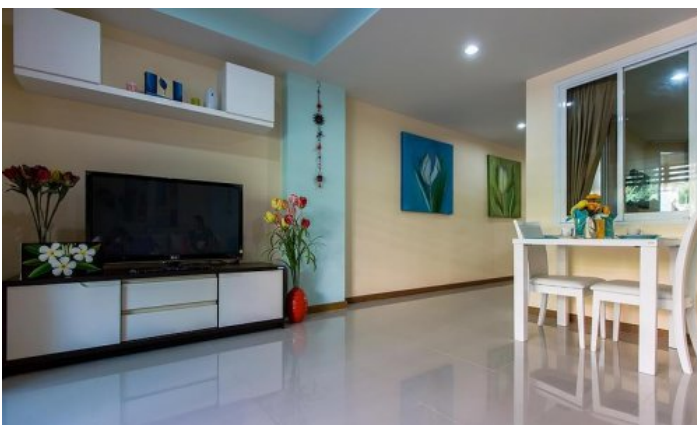
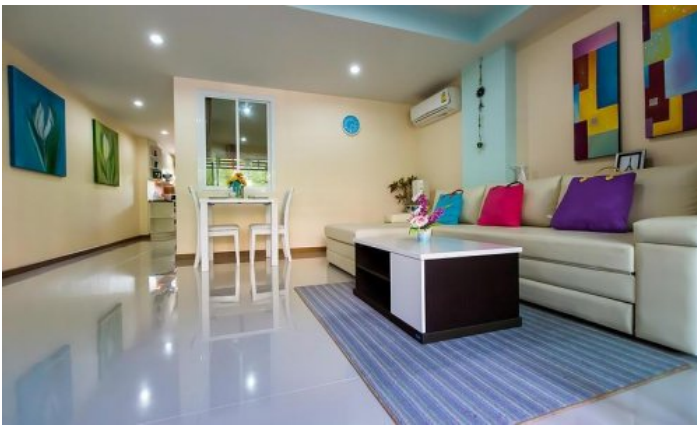


Deal type	Rent
Property type	Apartments
Stage	Completed
Completion date	2010
To the beach, m	2300
Bedrooms	1
Guests	2

Bathrooms	1
Total area, m²	65
View	Pool view
Floors	7
Furniture	Furnished
Listed by	Private person

Periods	Day, THB	3 Days, THB	Week, THB	2 Weeks, THB	Month, THB
01.04 - 30.09	2 150	6 450	15 000	25 000	43 000
01.10 - 30.11	2 750	8 250	20 000	35 000	55 000
01.12 - 31.01	3 250	9 750	30 000	40 000	65 000
01.02 - 31.03	2 750	8 250	20 000	35 000	55 000





Condominium with spacious apartments in a modern style with tropical décor. Each apartment is fully equipped with furniture and household appliances and a fully functional kitchen.

Infrastructure

The condominium is managed by the hotel and has its own restaurant, swimming pool, shared jacuzzi, fitness centre, clubhouse, 24-hour front desk. 24-hour security, video surveillance, reception, shuttle to the beach, parking.

What's nearby

One of the best beaches - Naiharn is located a kilometre from the project. The beach is popular with families with children and expats, so you will not find a large crowd of tourists here. A stone's throw from the beach, there is a freshwater lake and an observation deck with windmills. Nai Harn Beach is popular with families with children, as well as with winterers and long-livers of the island. It is comfortable to spend your holiday here, because Nearby there are many restaurants like European, and national Thai cuisine. There are also offices with transport rental and excursion services. For a long stay on Naiharn, it is comfortable to live for families with children - there are international and Thai kindergartens, international and Russian schools nearby. The way from Naiharn to the popular children's play complex "Rawai Park" will take 5 minutes by car or bike.

Naiharn is also often chosen for yoga tours or sports camping. At Naiharn and in the neighbouring Rawai district, there are gyms, specialized rings for Thai boxing and workout grounds. In 7-10 minutes drive there is a hyper market Makro, a supermarket with European products Villa Market, a fish market.

For whom is it suitable

The complex is ideal for absolutely everyone. The spacious apartments attract families with children.