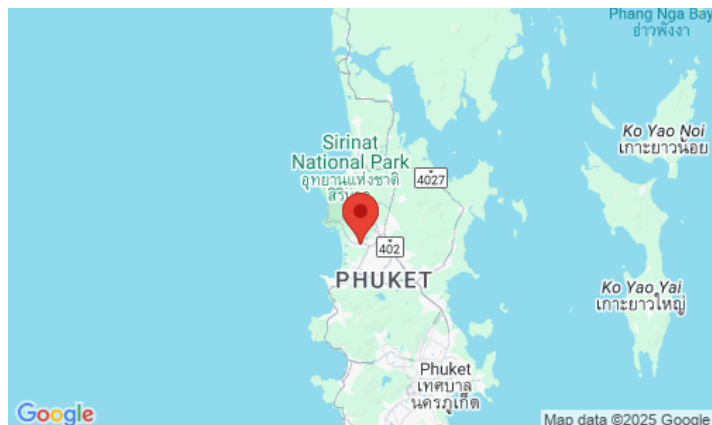


## ID0149 STUNNING 2-BEDROOM VILLA, WITH POOL VIEW IN SEASTONE POOL VILLAS PROJECT, ON BANGTAO/LAGUNA BEACH

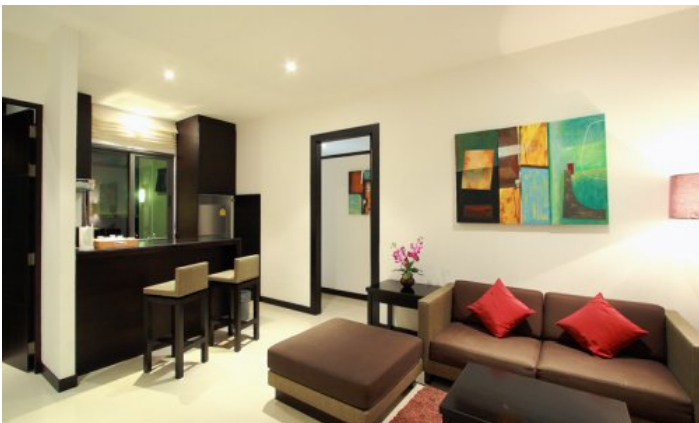


<b>Deal type</b>	Rent	<b>Bathrooms</b>	2
<b>Property type</b>	Villa	<b>Total area, m<sup>2</sup></b>	200
<b>Stage</b>	Completed	<b>Indoor area, m<sup>2</sup></b>	200
<b>Completion date</b>	2008	<b>View</b>	Pool view, Garden view
<b>To the beach, m</b>	3000	<b>Floors</b>	1
<b>Bedrooms</b>	2	<b>Furniture</b>	Furnished
<b>Guests</b>	4	<b>Listed by</b>	Company

Periods	Day, THB	3 Days, THB	Week, THB	2 Weeks, THB	Month, THB
01.05 - 30.10	9 000	15 000	32 500	57 500	100 000
01.10 - 31.11	10 500	19 500	42 250	74 750	130 000
01.02 - 30.04	10 500	195 000	422 500	747 500	130 000







A cozy project of 1 and 2 bedroom villas with private pool and parking. All villas are designed in a modern style with light colours. Each villa has a poolside terrace with an outdoor dining table and sun loungers.

**Infrastructure**

The project area is under 24-hour security and video surveillance.

**What's nearby**

Located just 10 minutes drive from Bangtao Beach. This beach is where Phuket's most popular beach clubs are located, such as Xana Beach Club, Dream Beach Club and Catch Club. Nearby is the Laguna Phuket Golf Club, which hosts international tournaments. Inexperienced golfers can use the services of a personal golf coach. A 10-minute drive from Phureesala is the Boat Avenue shopping complex with a variety of shops, countless restaurants and bars, and Villa Market, a European supermarket. The modern Porto De Phuket shopping complex, with countless restaurants, Tors supermarket, boutiques and food court, is just a short drive away. Nearby is the Lemonade Kids Club with a children's room and a pool for children, a hot sauna for adults. The bustling party scene of Patong is a 30-minute drive from the complex. The road from the airport to the complex will take about 25 minutes.

**For whom is it suitable**

The villas are located in one of the most prestigious areas of Phuket with developed infrastructure, but the cost of housing is relatively low. Therefore, the project is suitable for all those who like a measured holiday surrounded by beautiful landscapes will prefer a noisy crowd of tourists.