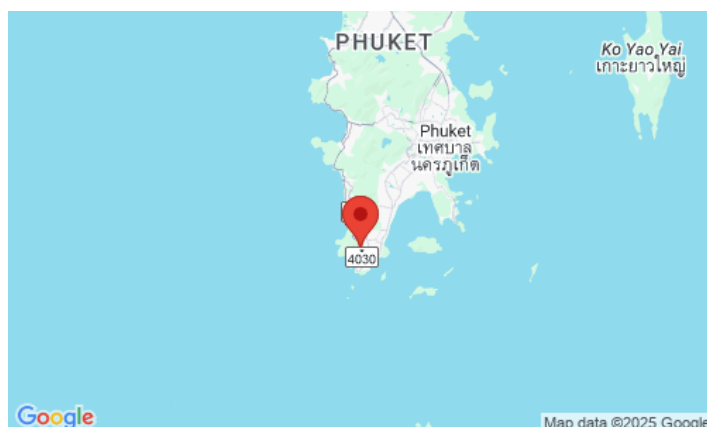
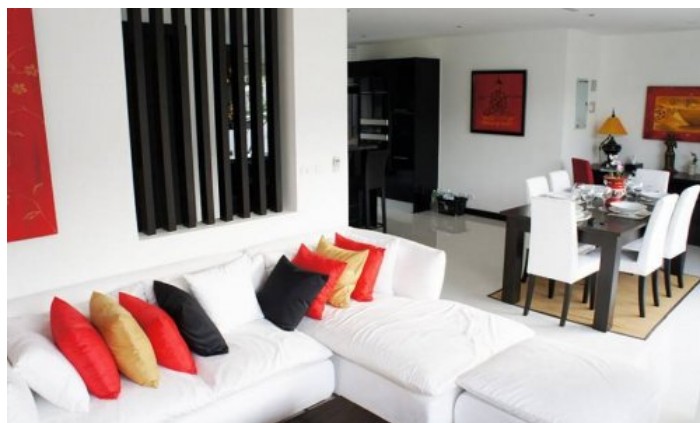


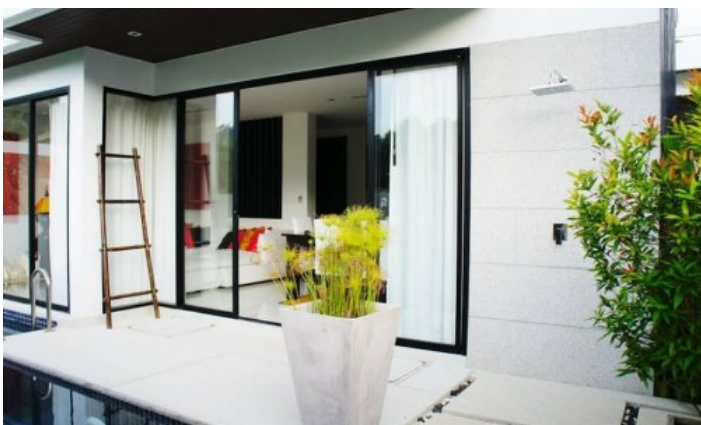
ID0155 EXCLUSIVE 2-BEDROOM VILLA, WITH POOL VIEW IN BY THE LAKE PROJECT, ON NAI HARN BEACH



Deal type	Rent	Bathrooms	2
Property type	Villa	Total area, m²	240
Stage	Completed	View	Pool view, Garden view
Completion date	2012	Floors	3
To the beach, m	700	Furniture	Furnished
Bedrooms	2	Listed by	Company
Guests	4		

Periods	Day, THB	3 Days, THB	Week, THB	2 Weeks, THB	Month, THB
01.04 - 31.10	7 500	21 750	45 000	83 375	145 000
01.11 - 13.12	9 500	37 500	65 000	143 750	250 000
14.12 - 31.01	13 500	40 500	87 750	155 250	270 000
01.02 - 31.03	9 500	37 500	65 000	143 750	250 000





Complex By The Lake presents 8 private villas with private parking and 24-hour security. 2 and 3-bedroom villas ranging from 240 m2 to 340 m2 with private pool. Naiharn Beach is just 800 meters away. Spacious, fully furnished villas with French windows are tastefully decorated in Zen style to give guests a true view of Southeast Asia. All villas have a rooftop patio with an al fresco dining area, multi-cushion sofas and great views of the jungle hills in the surrounding area. Each villa has a DVD player, flat-screen cable TV and a private bathroom with bathtub, as well as a well-equipped kitchen.

What's nearby

By The Lake Villas is a 6-minute walk from local beachfront restaurants and a 20-minute drive from Patong Town. One of the best beaches - Naiharn is located 800 meters from the project. The beach is popular with families with children and expats, so you will not find a large crowd of tourists here. A stone's throw from the beach, there is a freshwater lake and an observation deck with windmills. Nai Harn Beach is popular with families with children, as well as with winterers and long-livers of the island. It is comfortable to spend your vacation here, because Nearby there are many restaurants like European, and national Thai cuisine. There are also offices with transport rental and excursion services. For a long stay on Naiharn, it is comfortable to live for families with children - there are international and Thai kindergartens, international and Russian schools nearby. The way from Naiharn to the popular children's play complex "Rawai Park" will take 5 minutes by car or bike.

Naiharn is also often chosen for yoga tours or sports campings. At Naiharn and in the neighbouring Rawai district, there are gyms, specialized rings for Thai boxing and workout grounds. In 7-10 minutes drive there is a hyper market Makro, a supermarket with European products Villa Market, a fish market.

Phuket Town is a 30-minute drive away and Phuket International Airport is a 45-minute drive away.

For whom is it suitable

The complex is ideal for absolutely all categories of tourists.