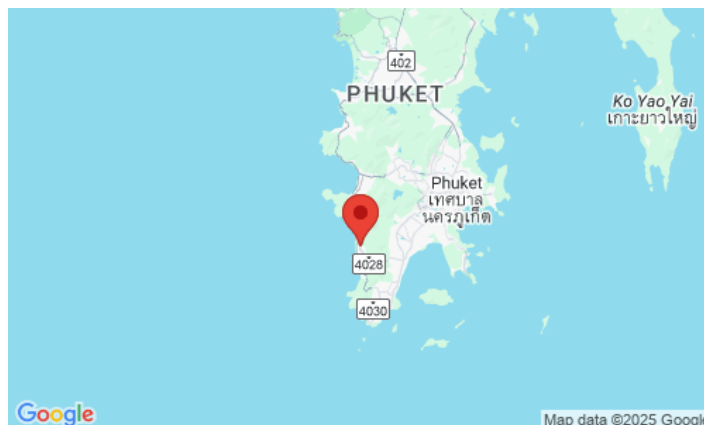


## ID0163 ASTONISHING 2-BEDROOM APARTMENTS, WITH SEA VIEW IN KARON HILL PROJECT, ON KARON BEACH

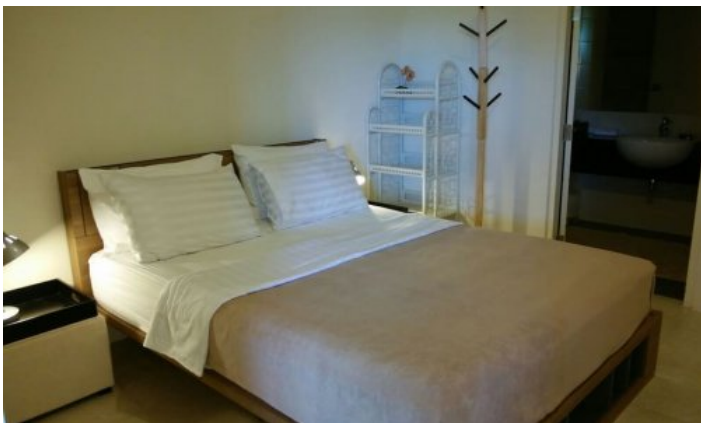
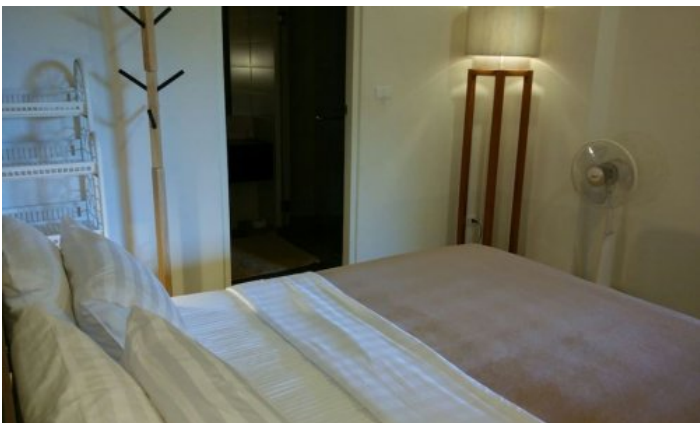


<b>Deal type</b>	Rent	<b>Bathrooms</b>	2
<b>Property type</b>	Apartments	<b>Total area, m<sup>2</sup></b>	128
<b>Stage</b>	Completed	<b>View</b>	Sea View, Pool view, Urban View
<b>Completion date</b>	2013	<b>Floors</b>	7
<b>To the beach, m</b>	400	<b>Furniture</b>	Furnished
<b>Bedrooms</b>	2	<b>Listed by</b>	Company
<b>Guests</b>	4		

Periods	Day, THB	3 Days, THB	Week, THB	2 Weeks, THB	Month, THB
01.05 - 31.10	5 000	12 000	26 000	60 000	80 000
01.11 - 30.11	6 500	24 000	52 000	78 000	160 000
01.12 - 31.01	8 000	30 000	65 000	96 000	200 000
01.02 - 30.04	6 500	24 000	52 000	78 000	160 000







Karon Hill, a stylish 3-building condominium surrounded by mountains and lush tropical gardens. Stylish modern complex with a large selection of apartments from studios to three-bedroom apartments located on an elevated position overlooking the beach or mountains.

**What's nearby**

The condominium is located just 2 minutes walk from the beach in the heart of beautiful Karon. Karon is the second-longest beach in Phuket, with a length of 3 kilometres. It is known for its deep blue sea, white sandy beach and its tranquillity compared to Patong Beach. Karon Beach is located in the south of Phuket, making it easy to get to Patong and Rawai beaches. Situated close to many of the tourist attractions as well as Phuket's vibrant nightlife to provide an unforgettable holiday experience.

**Infrastructure**

The complex has its own infinity pool, fitness centre with mountain views, clubhouse, games room, jacuzzi, 24-hour security and video surveillance, parking.

**For whom is it suitable**

The complex is designed to suit a diverse family holiday and create an atmosphere that matches the true holiday lifestyle with a modern Thai lifestyle. The apartments are perfect for young couples and groups of friends.