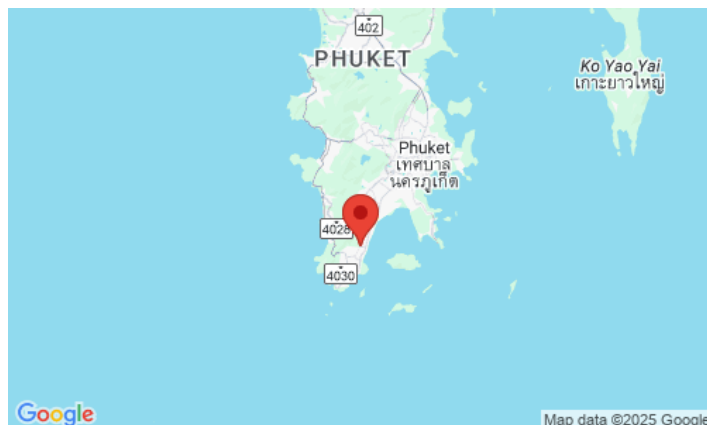
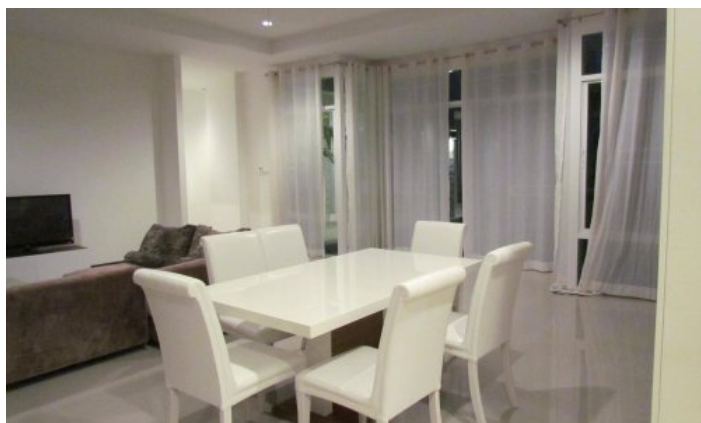
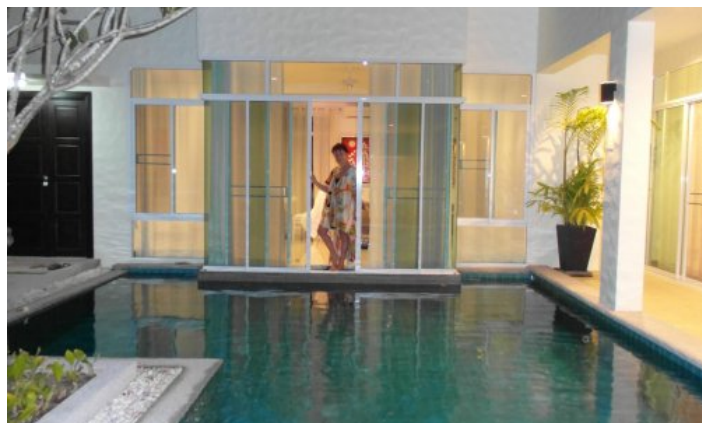


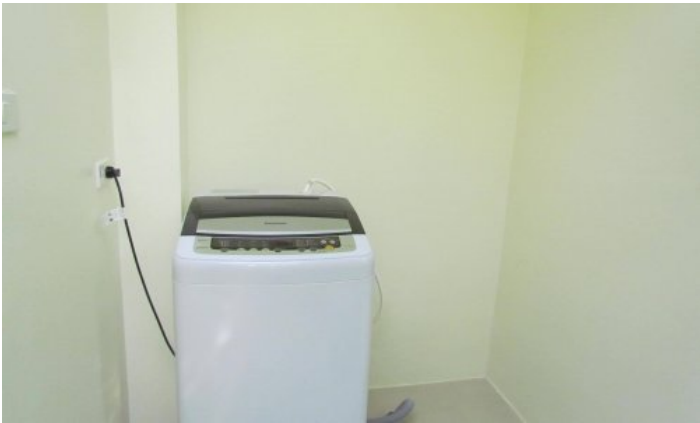
ID0714 EXCLUSIVE 4-BEDROOM VILLA, WITH POOL VIEW IN SAIYUAN MED VILLAGE PROJECT, ON RAWAI BEACH



Deal type	Rent	Bathrooms	3
Property type	Villa	Total area, m²	200
Stage	Completed	Land area, m²	240
Completion date	2010	View	Pool view, Garden view
To the beach, m	4000	Floors	2
Bedrooms	4	Furniture	Furnished
Guests	8	Listed by	Private person

Periods	Day, THB	3 Days, THB	Week, THB	2 Weeks, THB	Month, THB
01.05 - 31.10	5 000	13 500	30 000	51 750	90 000
01.11 - 30.11	7 000	27 000	60 000	103 500	180 000
01.12 - 31.01	13 000	37 500	90 000	143 750	250 000
01.02 - 30.04	7 000	27 000	60 000	103 500	180 000





Saiyuan Med Village, a complex located in the south of Phuket, a 10-minute drive from one of the best beaches in Phuket, Naiharn Beach. The construction of the complex was completed in 2010. In a closed area there are several asphalted streets where 63 Mediterranean style villas with 2, 3, 4 and 5 bedrooms, ranging from 120 m2 to 240 m2, are comfortably located. All houses on the outside are made in the same architectural style, but at the same time they have different layouts and designs. The project has villas with a private pool, each house has its own parking.

Infrastructure

The complex is under round-the-clock security, on the territory there is an office of the management company, a communal pool and a playground.

What's nearby

The complex is located in an area with a developed tourist infrastructure, close to restaurants, massage parlours, and 24-hour mini-markets. One of the best beaches - Naiharn is a 10-minute drive from the projects. The beach is popular with families with children and expats, so you will not find a large crowd of tourists here. A stone's throw from the beach, there is a freshwater lake and an observation deck with windmills. Nai Harn Beach is popular with families with children, as well as with winterers and long-livers of the island. It is comfortable to spend your vacation here, because Nearby there are many restaurants like European, and national Thai cuisine. There are also offices with transport rental and excursion services. For a long stay on Naiharn, it is comfortable to live for families with children - there are international and Thai kindergartens, international and Russian schools nearby. The way from Naiharn to the popular children's play complex "Rawai Park" will take 5 minutes by car or bike.

Naiharn is also often chosen for yoga tours or sports campings. At Naiharn and in the neighbouring Rawai district, there are gyms, specialized rings for Thai boxing and workout grounds. In 7-10 minutes drive there is a hyper market Makro, a supermarket with European products Villa Market, a fish market.

For whom is it suitable

The complex is ideal for absolutely everyone. Different sizes of villas and pricing policies will allow each category of tourists to spend their holidays in comfort. Especially popular with families with children and expats. Most often it is chosen for long-term residence. The location of the villas ensures privacy and comfort.