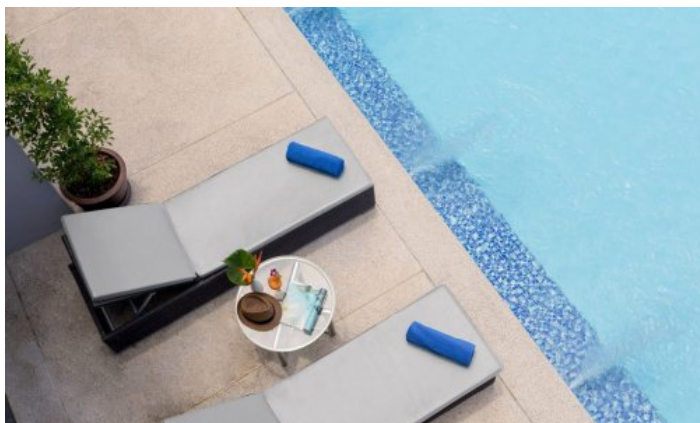


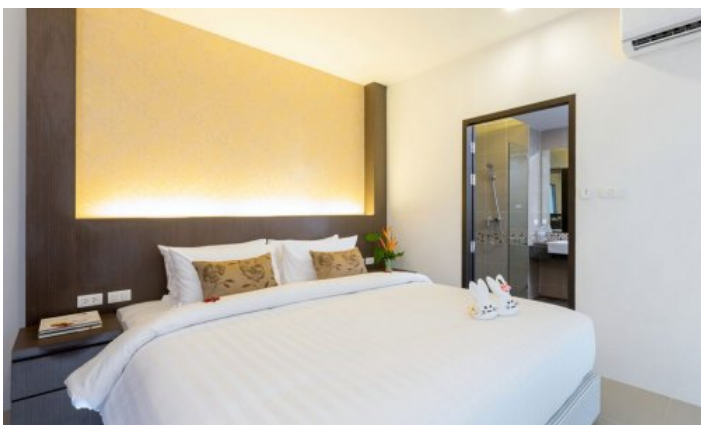
ID0730 COZY STUDIO APARTMENTS, WITH SEA VIEW IN PATONG BAY HILL PROJECT, ON PATONG BEACH



Price 5 760 000 THB (169 056 USD)

Deal type	Sale	Price per sqm	96 000 THB
Property type	Apartments	View	Sea View, Mountain View
Stage	Completed	Floor	1
Completion date	2021	Floors	2
To the beach, m	800	Furniture	Furnished
Bedrooms	Studio	Listed by	Developer
Bathrooms	1	Ownership	Foreign Freehold, Thai Freehold, Leasehold, Company
Total area, m²	60	Guaranteed income	7%





Patong Bay Hill condominium, located on a hill near Patong Beach, surrounded by lush greenery with stunning views of the Andaman Sea. This is a low rise condominium consisting of 15 buildings. Spacious one-bedroom apartments from 60 to 94m2 are designed in a modern style with fully furnished luxury furniture and a private balcony with sea and mountain views, where you can truly relax. The project also offers 5 room types: Suite, Suite with Pool Access, Premier Suite with Sea View, Premier Suite with Jacuzzi and Premier Suite with Pool Access.

Infrastructure

The project provides a wide range of services, swimming pool, fitness centre, children's room, spa, lobby. The project is under 24-hour security and video surveillance. What's more, you can benefit from the professional team's 5-star services throughout your stay.

What's nearby

The complex is located in Patong, just a 15-minute walk from the beach, Jungceylon Shopping Center and the famous Bangla Road nightlife, full of bars, restaurants, clubs and entertainment venues. There is absolutely everything from beach activities in Patong: jet skis, bananas, parachutes, kayak, paddle and surfboard rental. There are also volleyball nets on the beach for fans of this team game. Bangla is home to the largest discotheque in Phuket - Illusion. For lovers of club life, there are two floors, a large dance floor and VIP rooms. The nightclub features famous international DJs and great shows. Worldwide restaurants, including the popular Hard Rock Café. There are Thai food stalls and fruit stalls, fresh juices and fresh juices, massage parlours, convenience stores and 7-Eleven shops. A little further in the depths of Patong, the Jungceylon shopping centre is open, with stores of both national Thai and world brands. On its territory there is also a department store "Robinson" and "Big C". And opposite Jungceylon, next to Bangla Road, a new Central Festival was opened.

For whom is it suitable

One of the options that will surely satisfy your needs if you are considering buying property for investment and holiday.