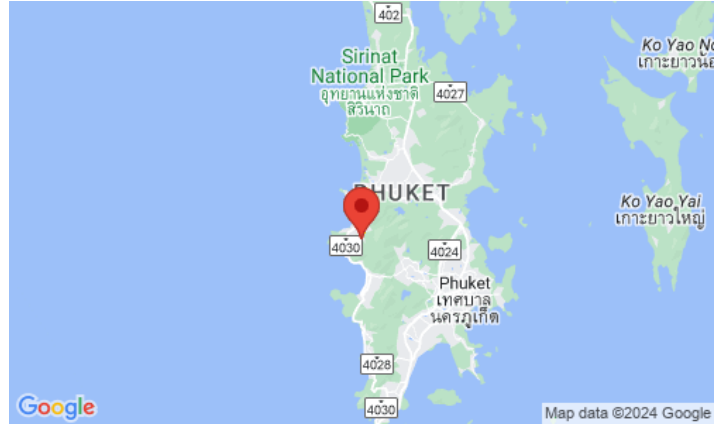


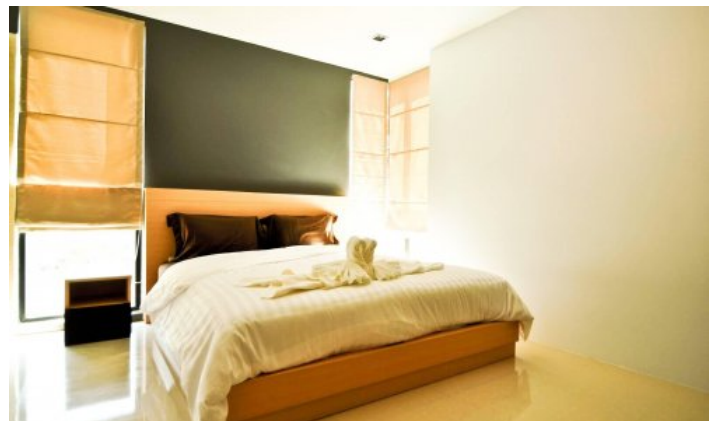
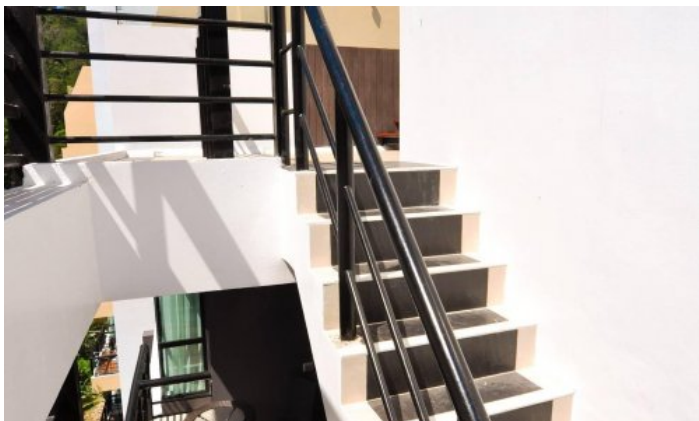
ID0734 STUNNING 2-BEDROOM APARTMENTS, WITH URBAN VIEW IN ROYAL KAMALA PROJECT, ON KAMALA BEACH BEACH

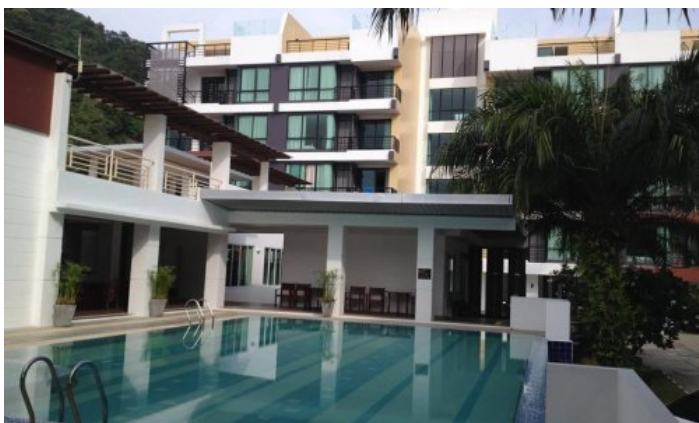


Deal type	Rent
Property type	Apartments
Stage	Completed
Completion date	2011
To the beach, m	3000
Bedrooms	2
Guests	4

Bathrooms	2
Total area, m²	147
View	Urban View, Mountain View
Floors	5
Furniture	Furnished
Listed by	Private person

Periods	Day, THB	3 Days, THB	Week, THB	2 Weeks, THB	Month, THB
01.05 - 31.10	4 500	7 500	25 000	28 750	50 000
01.11 - 30.11	5 500	11 250	33 000	43 125	75 000
01.12 - 28.02	5 500	16 500	35 750	63 250	110 000
01.03 - 30.04	5 500	11 250	33 000	43 125	75 000





Description of the project

Royal Kamala, low-rise condominium on Kamala beach. Consists of spacious apartments. The condominium was built surrounded by nature, each apartment offers beautiful mountain views, there are also apartments with access to the pool.

Infrastructure

The complex has a communal pool, fitness center, sauna, restaurant and parking. The project is under 24-hour security and video surveillance.

What's nearby

Phuket International Airport is located just 18 km from the hotel complex. The city center is 20 km away. You can get to the resort town of Kamala in just 5 minutes, where there are many shops, cafes, restaurants, beach clubs such as the world famous Cafe Del Mar, PINE Beach Club at Intercontinental Hotel, HQ Beach Club. Phuket FantaSea Theme Park is close by (1.4 km).

For whom is it suitable

Suitable for investment, short-term or long-term stays of small families and couples.