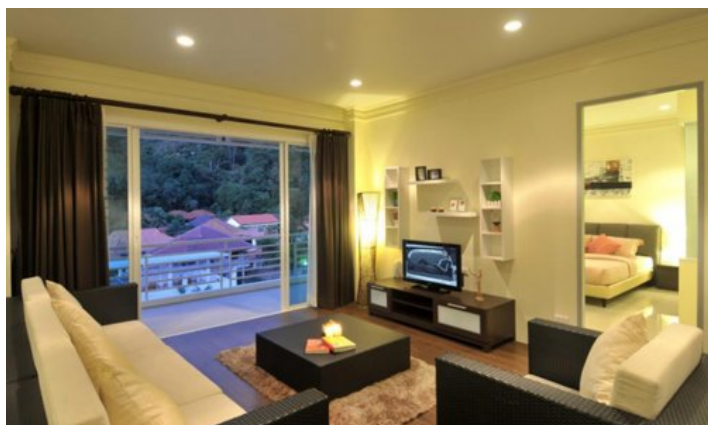
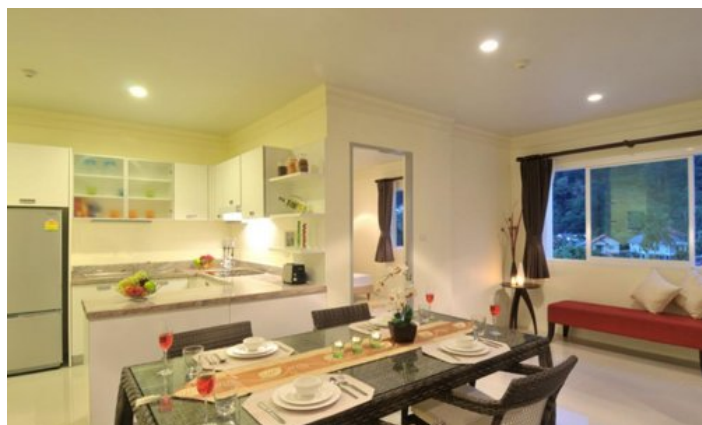
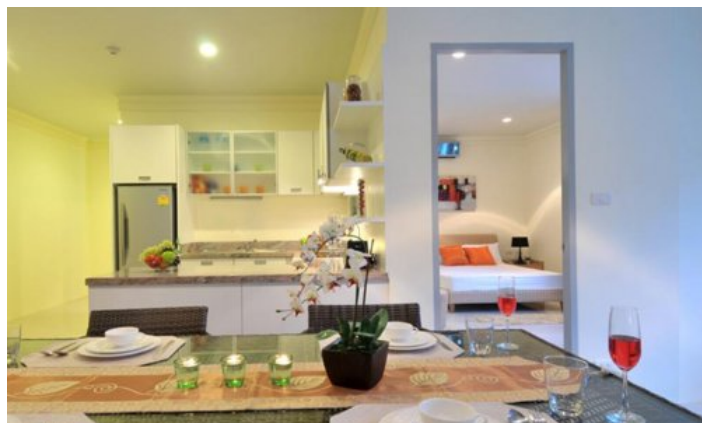
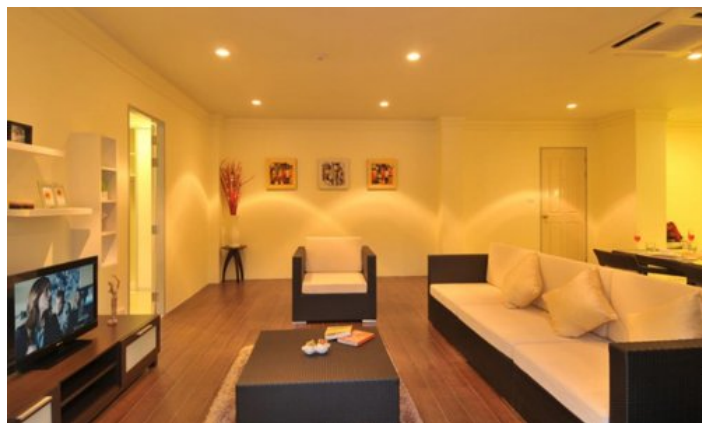


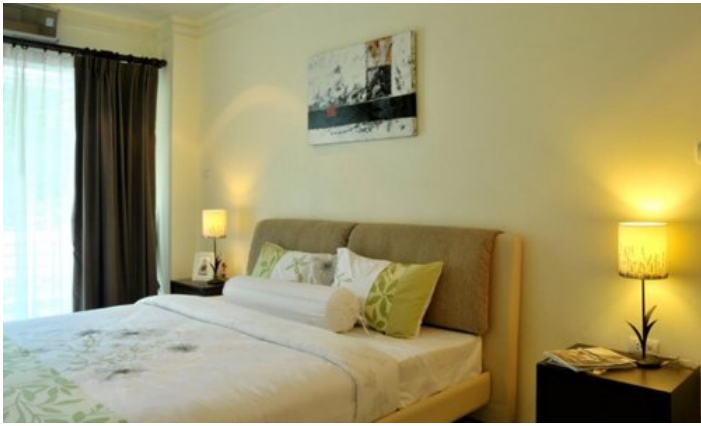
ID0804 CHIC 3-BEDROOM APARTMENTS, WITH URBAN VIEW IN ROYAL KAMALA PROJECT, ON KAMALA BEACH BEACH



Deal type	Rent	Bathrooms	2
Property type	Apartments	Total area, m²	140
Stage	Completed	View	Urban View
Completion date	2011	Floors	5
To the beach, m	3000	Furniture	Furnished
Bedrooms	3	Listed by	Developer
Guests	6		

Periods	Day, THB	3 Days, THB	Week, THB	2 Weeks, THB	Month, THB
01.12 - 28.02	4 500	13 500	29 250	51 750	90 000
01.11 - 30.03	3 250	9 750	21 125	37 375	65 000
01.05 - 31.10	1 750	5 250	11 375	20 125	35 000





Description of the project

Royal Kamala, low-rise condominium on Kamala beach. Consists of spacious apartments. The condominium was built surrounded by nature, each apartment offers beautiful mountain views, there are also apartments with access to the pool.

Infrastructure

The complex has a communal pool, fitness center, sauna, restaurant and parking. The project is under 24-hour security and video surveillance.

What's nearby

Phuket International Airport is located just 18 km from the hotel complex. The city center is 20 km away. You can get to the resort town of Kamala in just 5 minutes, where there are many shops, cafes, restaurants, beach clubs such as the world famous Cafe Del Mar, PINE Beach Club at Intercontinental Hotel, HQ Beach Club. Phuket FantaSea Theme Park is close by (1.4 km).

For whom is it suitable

Suitable for investment, short-term or long-term stays of small families and couples.