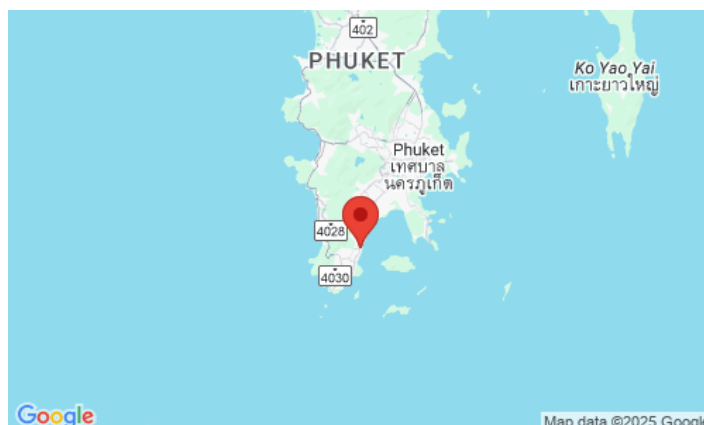
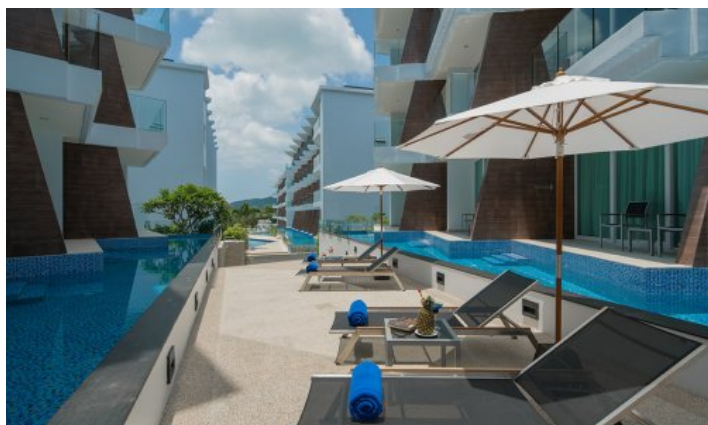
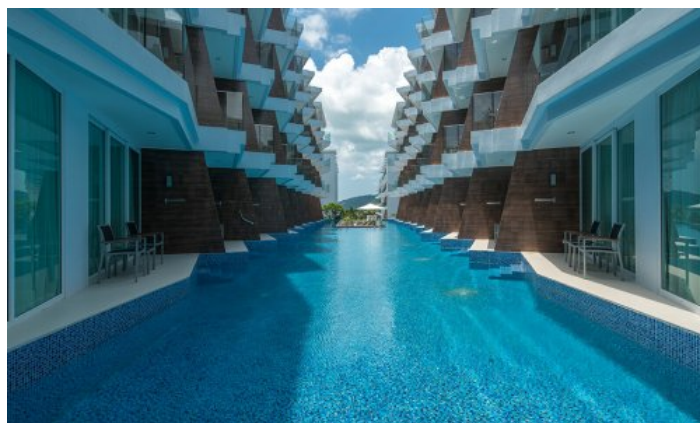


**ID0881 LUXURIOUS 1-BEDROOM APARTMENTS, WITH POOL VIEW AND NEAR THE SEA IN THE BEACHFRONT PROJECT, ON RAWAI BEACH**



**Price 5 093 490 THB (149 493 USD)**

<b>Deal type</b>	Sale	<b>Total area, m<sup>2</sup></b>	44
<b>Property type</b>	Apartments	<b>Price per sqm</b>	115 761 THB
<b>Stage</b>	Completed	<b>View</b>	Pool view
<b>Completion date</b>	2019	<b>Floors</b>	4
<b>To the beach, m</b>	20	<b>Listed by</b>	Developer
<b>Bedrooms</b>	1	<b>Ownership</b>	Foreign Freehold, Thai Freehold, Leasehold, Company
<b>Bathrooms</b>	1	<b>Guaranteed income</b>	7%







The Beachfront Condominium is located in the south of the island. It consists of six four-storey buildings and 208 apartments. On the territory there are 9 swimming pools with a total area of more than 1000 sq. M.

The condominium will offer the services of the popular four-star Best Western hotel. It offers reception and lobby, spacious restaurant, professional spa, gym, sauna, wonderful private beach club. Two high-speed boats, moored on the shore, will always be ready to travel to the neighbouring, wonderful islands.

The condominium offers a wide variety of apartments ranging from 24-bedroom studios to 101 sqm two-bedroom apartments. Each building has a stepped configuration, which allows for beautiful sea views from almost all apartments in the complex, and from the apartments located on the ground floor there is direct access to the communal and infinity pools, surrounded by a lush tropical garden!

### **What's nearby**

The Beachfront project is located right on the seafront, on Rawai Beach, a 10-minute walk from the Chalong Circle and within walking distance of restaurants and supermarkets. 5 km from the center of the island and 45 minutes from the airport.

Rawai is not a very comfortable beach for swimming because of the frequent low tide. But along the beach there is a picturesque promenade with fish restaurants, and in its eastern part there is a sea gypsy market, famous in Phuket, where fresh and live seafood is sold. The nearest bathing beach - Nai Harn is a 10-minute drive from the villa. The beach is popular with families with children and expats, so you will not find a large crowd of tourists here. It is comfortable to spend your vacation here, because Nearby there are many restaurants like European. and national Thai cuisine. There are also offices with transport rental and excursion services.

There is an international school within a few minutes drive from the complex. Also within a radius of 5-10 kilometers there are Russian and Thai kindergartens, international and Russian schools.

In the Rawai district and in the neighbouring Nai Harn district, there are gyms, specialised rings for Thai boxing and workout grounds. In 7-10 minutes drive there is a hyper market Makro, a supermarket with European products Villa Market, a fish market. Super grocery stores: Tesco Lotus, Macro, Villa Market, seafood market in Rawai, a large number of convenience stores (7 Eleven Super Cheap, Family Mart).

### **Who suits**

The complex is suitable for investors in order to obtain a guaranteed annual income. It is also ideal for any category of tourists who prefer hotel service available for long-term stays and short vacations.