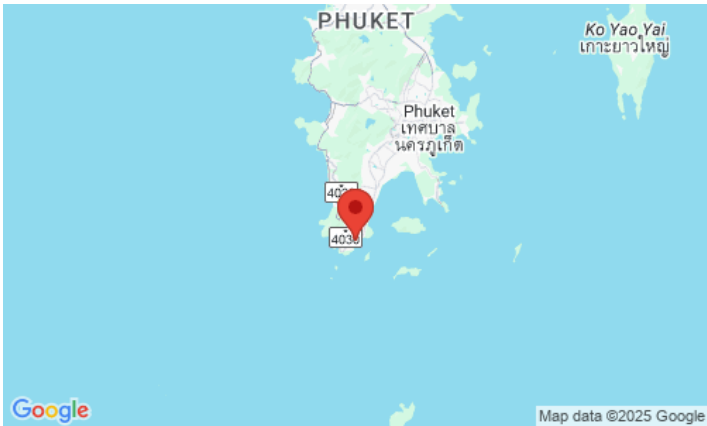


ID0962 FASHIONABLE 2-BEDROOM APARTMENTS, WITH POOL VIEW AND NEAR THE SEA IN THE TITLE RAWAI PROJECT, ON RAWAI BEACH

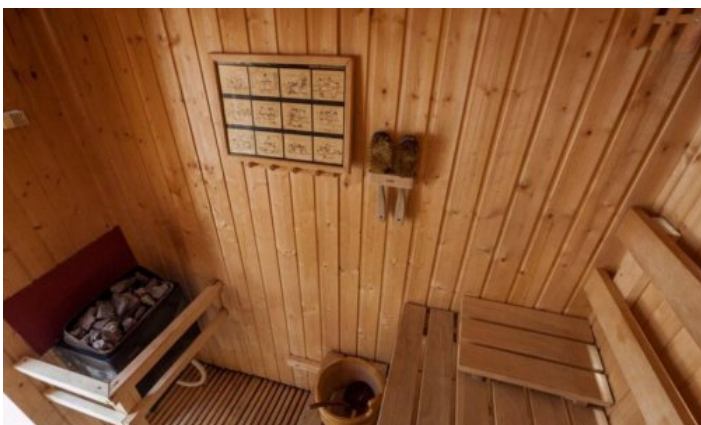
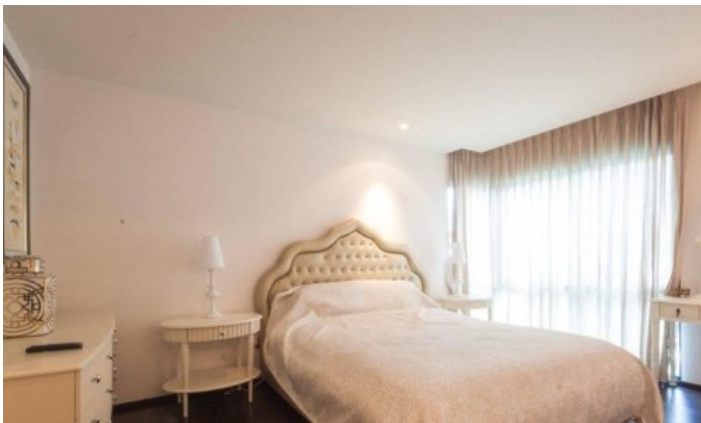
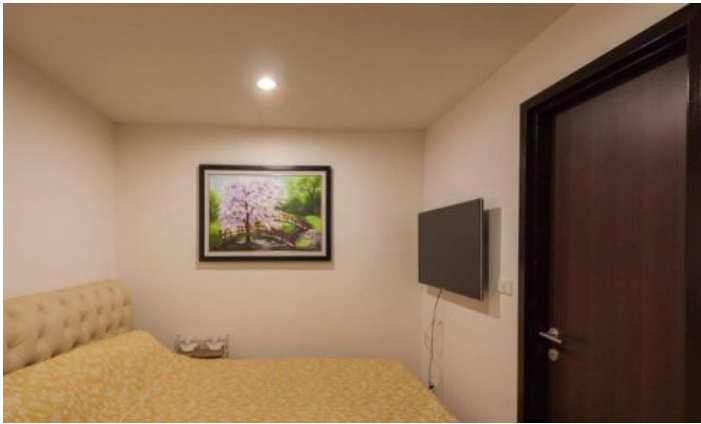


Deal type	Rent
Property type	Apartments
Stage	Completed
Completion date	2016
To the beach, m	20
Bedrooms	2
Guests	4

Bathrooms	2
Total area, m ²	81
View	Pool view
Floors	4
Furniture	Furnished
Listed by	Private person

Periods	Day, THB	3 Days, THB	Week, THB	2 Weeks, THB	Month, THB
01.11 - 15.12	5 000	0	0	0	95 000
21.01 - 30.04	5 000	0	0	0	110 000
15.12 - 20.01	0	0	0	0	140 000
01.05 - 01.11	2 000	0	0	0	40 000





The Title Rawai condominium is located on the southernmost point of Phuket Island. 20 meters from the popular Rawai promenade and in the very centre of the developed tourist infrastructure of the southern part of the island. The complex is divided into two parts. The first phase was commissioned in 2016, it consists of 7 buildings with elevators of 4 floors, the second phase is absolutely identical in architecture, it differs only in the year of construction, it is newer - it was commissioned in 2018. A recognizable feature of the project is the landscape design, families with children fell in love with this place for the green area and large swimming pools with a children's area, as well as for the opportunity for children to play completely safely on the territory of the complex and be absolutely calm for their safety, because the territory is guarded 24 hours a day. Young couples choose it for its privacy and the opportunity to spend romantic evenings in small restaurants on the seashore, which are located across the street from the complex. Elderly couples appreciate the incredibly comfortable conditions and the level of service, as well as the opportunity to get literally in a matter of minutes to the neighbouring Naiharn beach to swim and sunbathe on the white sand. Young guys and girls for the opportunity to make morning and evening jogging along the wide embankment in the shade of trees and for yoga classes right on the seashore, and in the evening for the opportunity to relax in one of the spa salons, which are located right next to the complex. And of course, everyone who loves to have fun fell in love with this place because there are numerous bars and restaurants within walking distance of the fish market, famous throughout Phuket.

Large and well-groomed green area with communal pools with a special children's area, there is also a sauna, reception and 24-hour security and parking on the territory.

The complex has studio apartments, 1 bedroom and 2-bedroom apartments with balcony or garden access, which have bedrooms, living room with TV, fully equipped kitchen, where you will find everything you need: dishes, refrigerator, kettle and microwave oven and balcony.

What's nearby

The complex is located 2 km from the observation deck "Windmill" and in km from Cape Promthep. Phuket Seashell Museum is 2.8 km away. Phuket International Airport is 49 km away.

One of the best beaches - Naiharn is located 4 kilometres from the project. The beach is popular with families with children and expats, so you will not find a large crowd of tourists here. A stone's throw from the beach, there is a freshwater lake and an observation deck with windmills. Naiharn Beach is popular with families with children, as well as with winterers and long-livers of the island. It is comfortable to spend your holiday here, because Nearby there are many restaurants like European, and national Thai cuisine. There are also offices with transport rental and excursion services. For a long stay on Naiharn, it is comfortable to live for families with children - there are international and Thai kindergartens, international and Russian schools nearby. The way from Naiharn to the popular children's play complex "Rawai Park" will take 5 minutes by car or bike.

Naiharn is also often chosen for yoga tours or sports camping. At Naiharn and in the neighbouring Rawai district, there are gyms, specialized rings for Thai boxing and workout grounds. In 7-10 minutes drive there is a hyper market Makro, a supermarket with European products Villa Market, a fish market.

For whom is it suitable

The apartments in the project are available for both short vacations and long term rentals. Most often this complex is chosen by expats and winterers, especially young and elderly couples, as well as families with children.