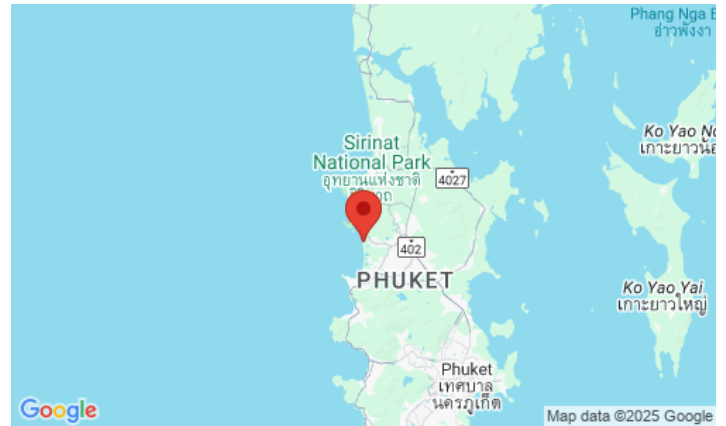
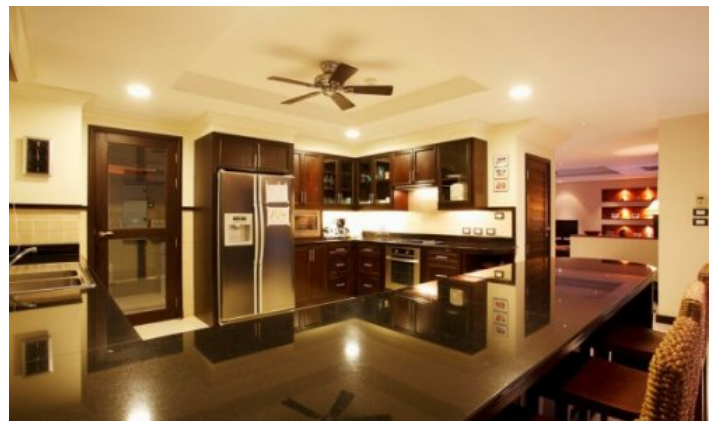
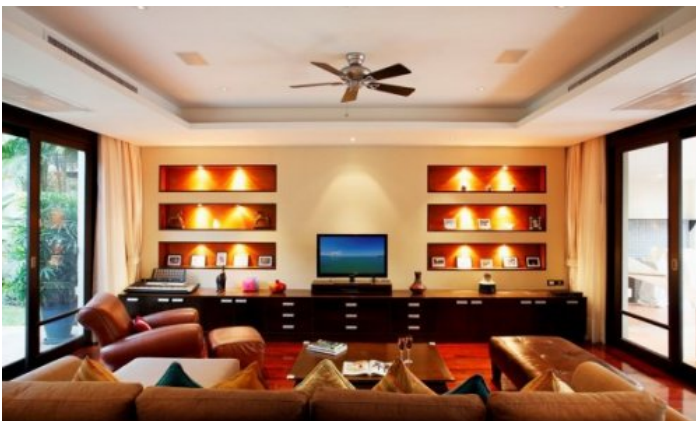


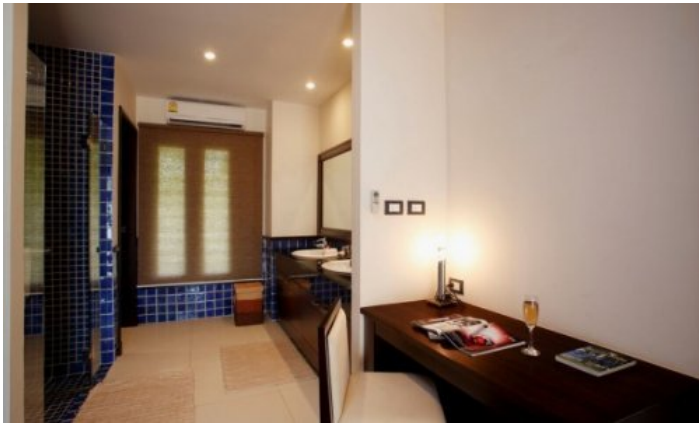
ID2069 COZY, LARGE 4-BEDROOM VILLA, WITH POOL VIEW AND NEAR THE SEA IN CHOM TAWAN PROJECT, ON BANGTAO/LAGUNA BEACH (+ VIDEO REVIEW)



Deal type	Rent	Bathrooms	4
Property type	Villa	Total area, m²	500
Stage	Completed	View	Pool view, Garden view
Completion date	2008	Floors	3
To the beach, m	50	Parking spots	1
Bedrooms	4	Furniture	Furnished
Guests	8	Listed by	Company

Periods	Day, THB	3 Days, THB	Week, THB	2 Weeks, THB	Month, THB
01.05 - 30.09	13 500	37 500	81 250	143 750	250 000
01.10 - 30.11	28 000	75 000	162 500	287 500	500 000
01.12 - 31.01	39 000	117 000	253 500	448 500	780 000
01.02 - 30.04	25 000	75 000	162 500	287 500	500 000





A rarity for Phuket - the first line from the sea! Chom Tawan is a complex of cozy spacious apartments and villas with a beautiful view located 50 meters from Bangtao beach. The apartments consist of 3-storey buildings, the villas are two-storey. In total, the complex has 20 luxurious villas and 24 spacious apartments, made in the same style. Built in Thai tropical style: massive furniture, lots of greenery, trees and winding paths among the palm trees.

Infrastructure

On the territory of the project there is a swimming pool with sun loungers, a children's pool, parking. Chom Tawan is a small, well-groomed town with lush walking paths and green lawns between houses. The project is guarded around the clock; the office of the service company is also located here.

What's nearby

The 8 km long Bangtao Beach is within walking distance of the Chom Tawan Project. This beach is home to Phuket's most popular beach clubs such as Xana Beach Club, Dream Beach Club and Catch Club. Next to Chom Tawan is the Laguna Phuket Golf Club, which hosts international tournaments. Inexperienced golfers can use the services of a personal golf coach. Nearby is the Boat Avenue shopping complex with many shops, countless restaurants and bars, and the Villa Market supermarket for European products. The modern Porto De Phuket shopping complex, with countless restaurants, Tors supermarket, boutiques and food court, is just a short walk away. Nearby is the Lemonade Kids Club with a children's room and a pool for children, a hot sauna for adults. The bustling party scene of Patong is a 25-minute drive from the complex. The road from the airport to the complex will take about 30 minutes. This location makes Chom Tawan one of the most desirable and popular residential complexes for both tourists and expats.

For whom is it suitable

The location of the buildings and villas ensures complete privacy, which is why the wealthy guests of the island like to relax here. The large size of the villas attracts large families with children and nannies. And the peculiarity of the layout with private, non-contiguous bedrooms is liked by large campaigns from several families.