

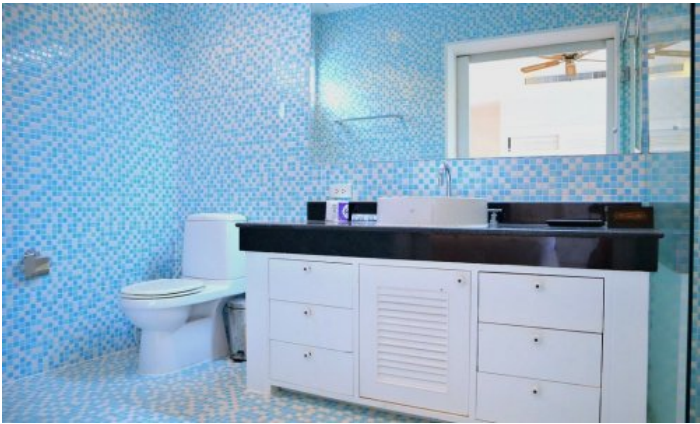
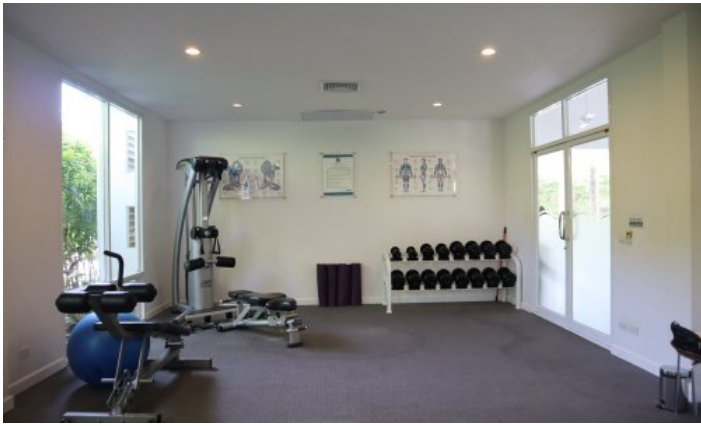
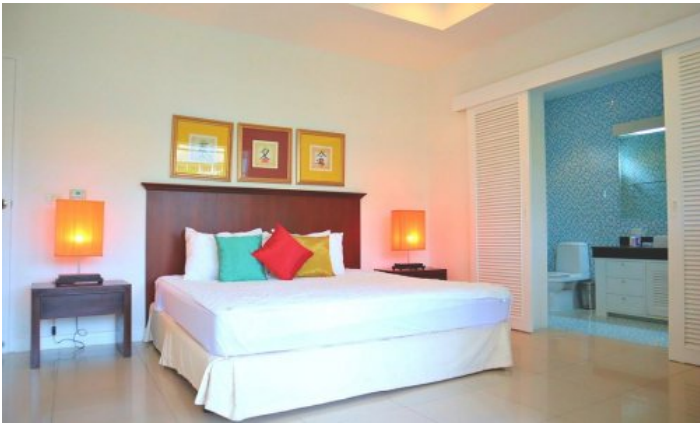
ID2111 INCREDIBLE 2-BEDROOM APARTMENTS, WITH POOL VIEW IN OCEAN BREEZE PROJECT, ON BANGTAO/LAGUNA BEACH



Deal type	Rent	Bathrooms	2
Property type	Apartments	Total area, m²	100
Stage	Completed	View	Pool view, Lake View , Garden view
Completion date	2006	Floors	3
To the beach, m	1200	Furniture	Furnished
Bedrooms	2	Listed by	Company
Guests	4		

Periods	Day, THB	3 Days, THB	Week, THB	2 Weeks, THB	Month, THB
01.05 - 30.06	5 500	16 500	35 750	63 250	110 000
01.07 - 31.08	4 750	14 250	30 875	54 625	95 000
01.09 - 31.10	5 500	16 500	35 750	63 250	110 000
01.11 - 30.11	6 250	18 750	40 625	71 875	125 000
01.12 - 31.01	8 500	25 500	55 250	97 750	170 000
01.02 - 30.04	6 250	18 750	40 625	71 875	125 000





Ocean Breeze is an award-winning complex that was built in 2006 and is still a favourite destination for expats and visitors to Phuket today. The complex consists of three-storey buildings surrounded by a lake and pool. Ocean Breeze has 3 types of apartments: studios, one and two-bedroom units. All apartments overlook a picturesque garden, pool and lake. There are 50 spacious apartments in the project. With its delightful and timeless design, lush gardens glowing with exotic flowers, first-class service, convenient location, great value for money and genuine privacy, this apartment will enchant anyone looking for a unique, personalised holiday in Thailand.

Infrastructure

The Ocean Breeze has a communal swimming pool with sun loungers and showers, a gym and walking paths. You can get to the beach by rented motorbike or car and it only takes 5 minutes.

What's nearby

Ocean Breeze is located just a 5-minute drive from Bangtao Beach. This beach is where Phuket's most popular beach clubs are located, such as Xana Beach Club, Dream Beach Club and Catch Club. The nearby Laguna Phuket Golf Club hosts international tournaments. Inexperienced golfers can use the services of a personal golf coach. A 10-minute drive from the complex is the Boat Avenue shopping complex with many shops, countless restaurants and bars, Villa Market supermarket of European products. The modern Porto De Phuket shopping complex, with countless restaurants, Tors supermarket, boutiques and food court, is just a short drive away. Nearby is the Lemonade Kids Club with a children's room and a pool for children, a hot sauna for adults. The bustling party scene of Patong is a 30-minute drive from the complex. The road from the airport to the complex will take about 25 minutes.

For whom is it suitable

Ocean Breeze is located in one of the most prestigious areas of Phuket with developed infrastructure, but the cost of housing is relatively low. Therefore, the project is suitable for all those who prefer a measured rest surrounded by beautiful landscapes.