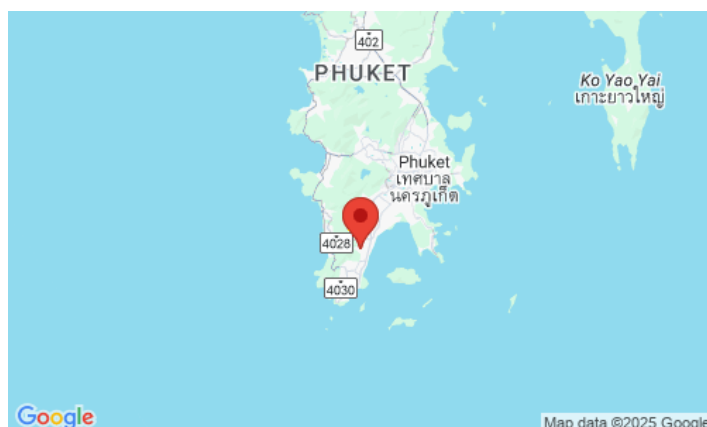
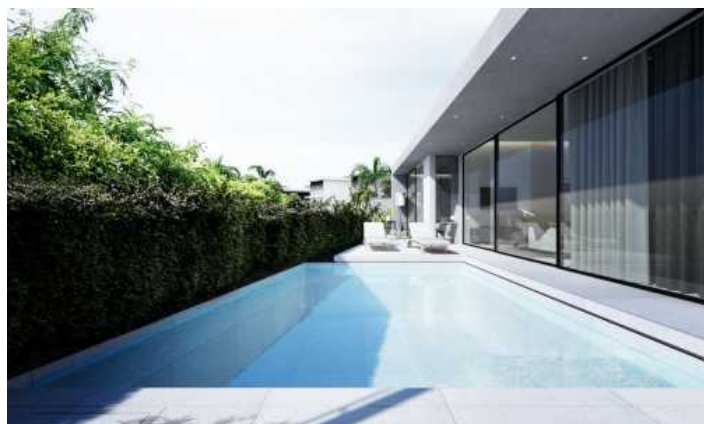


ID2113 ASTONISHING 2-BEDROOM VILLA, WITH POOL VIEW IN THE GREENS PROJECT, ON RAWAI BEACH



Price 9 700 000 THB (0 USD)

Deal type	Sale	Price per sqm	48 500 THB
Property type	Villa	Land area, m ²	200
Stage	Completed	View	Pool view, Garden view
Completion date	2024	Floors	1
To the beach, m	7300	Furniture	Unfurnished
Bedrooms	2	Listed by	Developer
Bathrooms	2	Ownership	Thai Freehold, Leasehold, Company
Total area, m ²	200	Land ownership	Thai Freehold, Leasehold, Company





The new project in one of the most popular areas among tourists from all over the world, Rawai, offers elegant villas designed in a blend of Thai-European style. Each villa comes with its own private pool and territory, ensuring tranquility and safety in harmony with the surrounding nature.

A significant advantage is the possibility of installment payments at a reasonable property cost (prices starting from 9.4 million Thai Baht). The project offers off-plan villas with completion within 18 months from the moment of paying 40% of the villa's cost.

Located in a secluded spot surrounded by lush forests and mountains, the project remains in close proximity to all the infrastructure of the popular tourist areas of Nai Harn and Rawai. This makes the project suitable for both permanent residence and short-term vacations in Phuket.

The new project in one of the most popular areas among tourists from all over the world, Rawai, offers elegant villas designed in a blend of Thai-European style. Each villa comes with its own private pool and territory, ensuring tranquility and safety in harmony with the surrounding nature.

A significant advantage is the possibility of installment payments at a reasonable property cost (prices starting from 9.4 million Thai Baht). The project offers off-plan villas with completion within 18 months from the moment of paying 40% of the villa's cost.

Located in a secluded spot surrounded by lush forests and mountains, the project remains in close proximity to all the infrastructure of the popular tourist areas of Nai Harn and Rawai. This makes the project suitable for both permanent residence and short-term vacations in Phuket.