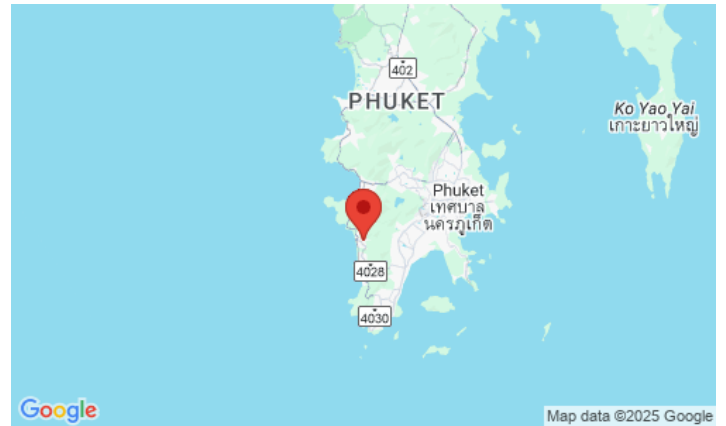
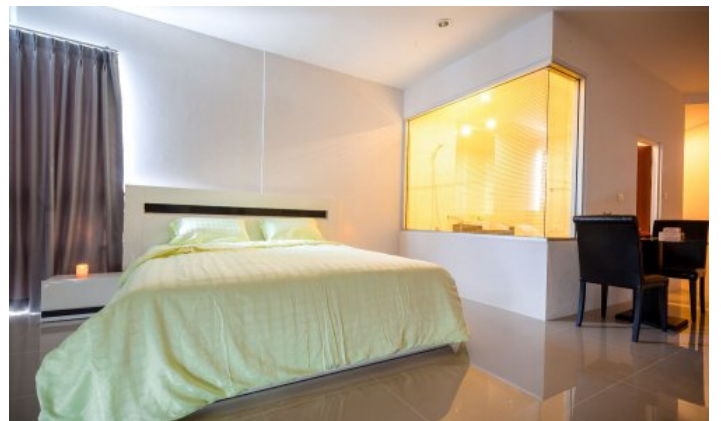


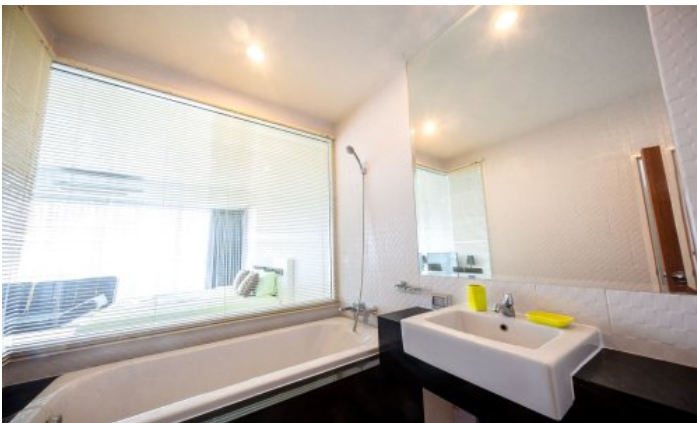
ID2240 AMAZING 1-BEDROOM APARTMENTS, WITH SEA VIEW IN KARON CHIC PROJECT, ON KARON BEACH



Deal type	Rent	Bathrooms	1
Property type	Apartments	Total area, m²	45
Stage	Completed	View	Sea View, Urban View, Mountain View
Completion date	2012	Floors	7
To the beach, m	1300	Furniture	Furnished
Bedrooms	1	Listed by	Company
Guests	2		

Periods	Day, THB	3 Days, THB	Week, THB	2 Weeks, THB	Month, THB
01.05 - 30.09	1 800	3 450	7 475	13 225	23 000
01.10 - 30.11	2 600	7 050	15 275	27 025	47 000
01.12 - 31.01	2 750	8 250	17 875	31 625	55 000
01.02 - 30.04	2 600	7 050	15 275	27 025	47 000





Chic Condominium is a modern condominium project consisting of 45-47 sqm studios and 82 sqm 2 bedroom apartments. Many of the apartments have sea views from the 2nd floor.

What's nearby

The condominium is located just 2 minutes walk from the beach in the heart of beautiful Karon. Karon is the second-longest beach in Phuket, with a length of 3 kilometres. It is known for its deep blue sea, white sandy beach and its tranquillity compared to Patong Beach. Karon Beach is located in the south of Phuket, making it easy to get to Patong and Rawai beaches. Located close to many of the tourist attractions as well as Phuket's vibrant nightlife to provide an unforgettable vacation experience.

Infrastructure

The complex has its own infinity pool, fitness centre with mountain views, clubhouse, games room, jacuzzi, 24-hour security and video surveillance, parking.

For whom is it suitable

The complex is designed to suit a diverse family holiday and create an atmosphere that matches the true holiday lifestyle with a modern Thai lifestyle. The apartments are perfect for young couples and groups of friends.