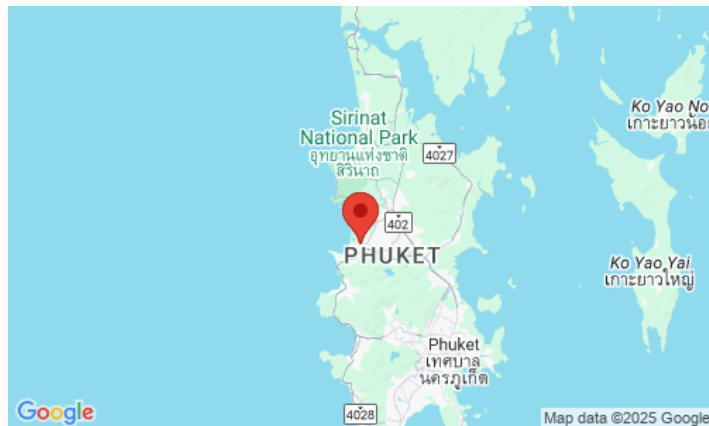


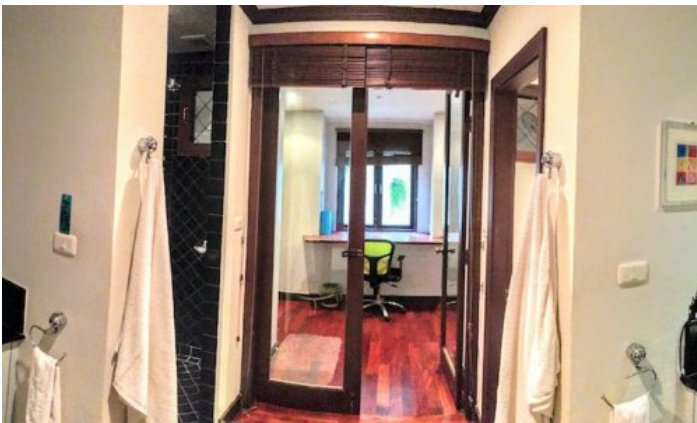
ID2332 INCREDIBLE, SPACIOUS 4-BEDROOM VILLA, WITH POOL VIEW IN SAI TAAN PROJECT, ON BANGTAO/LAGUNA BEACH (+ VIDEO REVIEW)



Deal type	Rent	Total area, m²	450
Property type	Villa	Land area, m²	1400
Stage	Completed	View	Pool view, Garden view
Completion date	2008	Floors	1
To the beach, m	1200	Parking spots	1
Bedrooms	4	Furniture	Furnished
Guests	8	Listed by	Company
Bathrooms	4		

Periods	Day, THB	3 Days, THB	Week, THB	2 Weeks, THB	Month, THB
01.05 - 30.09	0	0	0	0	250 000
01.10 - 30.11	0	0	0	0	500 000
01.12 - 31.01	0	0	0	0	650 000
01.02 - 30.04	0	0	0	0	500 000





Sai Taan is one of the largest residences in Phuket. The project consists of 48 luxury Balinese style villas with red tile roofs, ranging from 450 m2, each with 3 to 5 bedrooms. The entire project is executed in the same style, the typical layout of the villa is an L-shaped main building, which houses a living room, a kitchen, several separate bedrooms with their own bathrooms and a maid's room. In a separate pavilion there is a guest bedroom with a bathroom. In the center is a large swimming pool with jacuzzi, bar and covered gazebo for relaxation. Each villa has its own covered parking. The villas are fenced off from each other and are completely private. The project is literally surrounded by tropical greenery and flowers.

Infrastructure

The Sai Taan project is a small well-groomed town with paths for walks immersed in greenery and green lawns between houses. The project is guarded around the clock, the office of the service company is also located here.

What's nearby

The 8 km long Bangtao Beach is within walking distance of the Sai Taan Project. This beach is home to Phuket's most popular beach clubs such as Xana Beach Club, Dream Beach Club and Catch Club. Next to Sai Taan is the Laguna Phuket Golf Club, which hosts international tournaments. Inexperienced golfers can use the services of a personal golf coach. Just a few steps from Sai Taan Villas - Boat Avenue shopping complex with many shops, countless restaurants and bars, Villa Market supermarket of European products. The modern Porto De Phuket shopping complex, with countless restaurants, Tors supermarket, boutiques and food court, is just a short walk away. Nearby is the Lemonade Kids Club with a children's room and a pool for children, a hot sauna for adults. The bustling party scene of Patong is a 25-minute drive from the complex. The road from the airport to the complex will take about 30 minutes. This location makes Sai Taan one of the most desirable and popular residential developments among tourists and expats alike.

For whom is it suitable

The location of the buildings and villas ensures complete privacy, which is why the wealthy guests of the island like to relax here. The large size of the villas attracts large families with children and nannies. And the peculiarity of the layout with private, non-contiguous bedrooms is liked by large campaigns from several families.