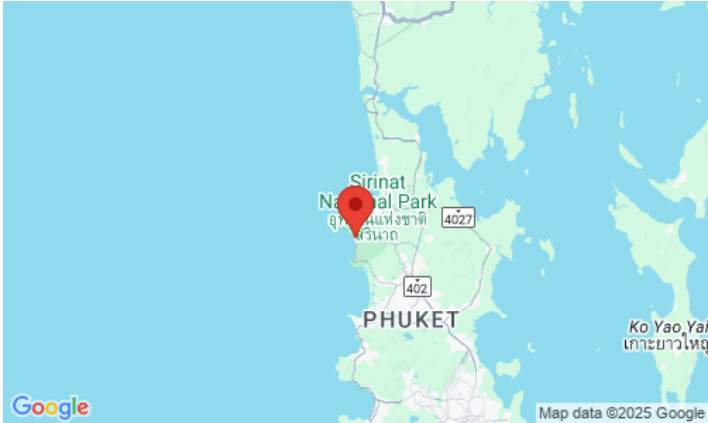


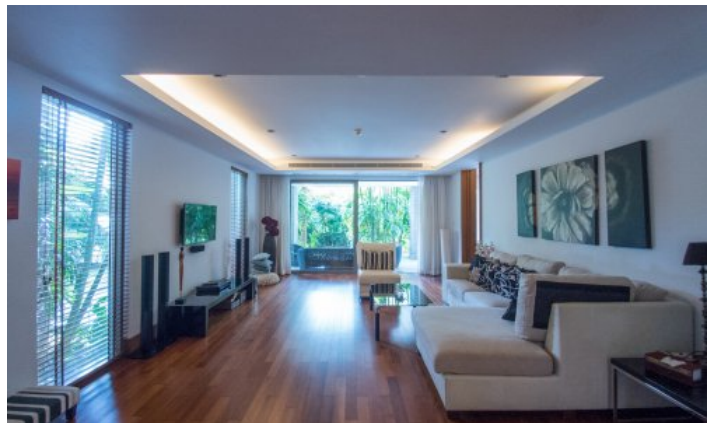
ID2377 CHIC 3-BEDROOM APARTMENTS, WITH POOL VIEW AND NEAR THE SEA IN PEARL OF NAITHON PROJECT, ON NAITHON BEACH (+ VIDEO REVIEW)



Deal type	Rent	Bathrooms	3
Property type	Apartments	Total area, m ²	232
Stage	Completed	View	Pool view
Completion date	2010	Floors	3
To the beach, m	50	Furniture	Furnished
Bedrooms	3	Listed by	Private person
Guests	6		

Periods	Day, THB	3 Days, THB	Week, THB	2 Weeks, THB	Month, THB
-	0	0	0	0	0





The Pearl of Naithon complex fully lives up to its name, being the pearl of luxury real estate not only on the island, but also in all resorts in the world.

The complex consists of six four-storey buildings with 77 apartments, designed for an unforgettable vacation. The third and fourth floors are occupied by luxurious duplex penthouses, the first and second floors are spacious apartments. The minimum area of a one-bedroom apartment is 110 m², the largest are four-bedroom penthouses with an area of 330 m². The apartments have very high ceilings, only natural mahogany is used in the decoration, and marble in the bathrooms. All apartments have either sea or pool views. The apartments are luxuriously furnished and exquisitely decorated.

Infrastructure

In the common area of the complex, guests and owners have a large landscaped communal pool with jacuzzi, gym, reception and underground and ground parking. There are sun loungers with umbrellas by the pool, as well as a Thai gazebo for relaxation. The complex is fully guarded 24 hours a day. In addition, the complex is surrounded by tropical vegetation and surrounded on all sides by the hills of the national park. All this creates an idealistic environment and gives a feeling of security, serenity and the desired calmness.

What's nearby

The Pearl of Naithon complex is located on the first line of the sea, just 50 meters from Naithon Beach, one of the most beautiful and tranquil beaches in Phuket. A gracefully curved bay, soft white sand and ideal water temperatures are at your disposal 24 hours a day. Just imagine how convenient it is, because you no longer have to waste precious time on the road to the sea. The desire to bathe will be immediately realised. The ocean will become your faithful companion throughout the rest, opening up all its potential in front of you! The entire tourist infrastructure, such as massage, shops, markets, cafes, restaurants and bars is located along the first coastline, you can reach any of these locations in a maximum of 10 minutes on foot.

Pearl of Naithon is conveniently located just 10 minutes' drive from Phuket International Airport and 15 minutes from 4 world renowned golf clubs. at a distance of 10-15 minutes by car there are 4 large supermarkets: Makro, Tesco Lotus, Villa Market and Porto de Phuket. And also the world famous resort Laguna Phuket.

Who suits

Pearl of Naithon is perfect for you if you prefer a measured beach holiday and clear sea to night parties and noisy crowds of tourists. Families with children and older couples feel equally great here. The project is very popular with tourists from Europe.