

ID2415 LUXURIOUS PREMIUM, LARGE 5-BEDROOM VILLA, WITH SEA VIEW AND NEAR THE SEA IN MALAIWANA PROJECT, ON NAITHON BEACH

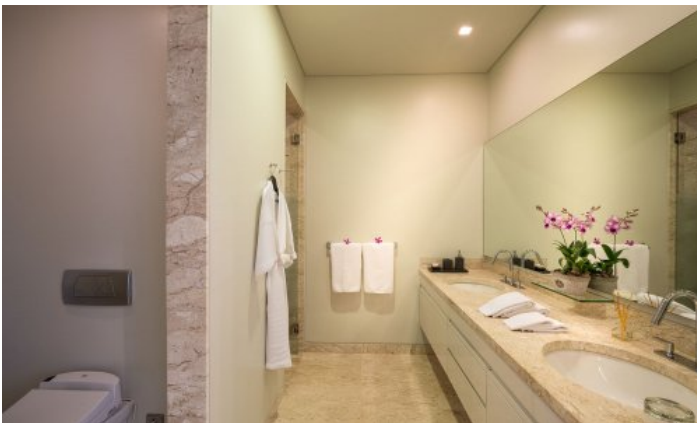


Deal type	Rent	Total area, m²	1800
Property type	Villa	Indoor area, m²	1600
Stage	Completed	Land area, m²	1800
Completion date	2015	View	Sea View
To the beach, m	100	Floors	2
Bedrooms	5	Furniture	Furnished
Guests	14	Listed by	Company
Bathrooms	5		

Periods	Day, THB	3 Days, THB	Week, THB	2 Weeks, THB	Month, THB
17.12 - 09.01	110 000	0	0	0	0
09.01 - 28.02	60 000	0	0	0	0
01.03 - 31.03	55 000	0	0	0	0
21.04 - 31.10	45 000	0	0	0	0







Malaiwana is a contemporary luxury tropical villa project. The villas offer panoramic sea views, where you can watch the magnificent sunsets of the Andaman Sea. The project is considered one of the best residential developments on the island. Attention to detail and meticulous workmanship have set new standards for luxury tropical living.

Comprising just 12 stunning private villas and 4 penthouses and 8 duplexes, Malaiwana Residences embody a fresh and innovative approach to tropical apartment living, offering villa-scale accommodation with the convenience of an apartment to owners.

### **Infrastructure**

You will experience the luxury and 5-star services of a professional team, be it different types of food, Thai and international dishes from the chef, relax in the health and beauty spas. The project area is under 24-hour security and video surveillance.

### **What's nearby**

The project is located on the first line of the sea, just 50 meters from Naithon Beach - one of the most beautiful and calm beaches in Phuket. A gracefully curved bay, soft white sand and ideal water temperatures are at your disposal 24 hours a day. Just imagine how convenient it is, because you no longer have to waste precious time on the road to the sea. The desire to bathe will be immediately realized. The ocean will become your faithful companion throughout the rest, opening up all its potential in front of you! The entire tourist infrastructure, such as massage, shops, markets, cafés, restaurants and bars is located along the first coastline, you can reach any of these locations in a maximum of 10 minutes on foot.

The project is conveniently located just 10 minutes from Phuket International Airport and 15 minutes from 4 world-famous golf clubs at a distance of 10-15 minutes by car there are 4 large supermarkets: Makro, Tesco Lotus, Villa Market and Porto de Phuket. And also the world-famous resort Laguna Phuket.

### **Who suits**

An atmosphere of luxury and comfort. Ideal for people who prefer a private holiday, as well as lovers of a measured beach holiday with the cleanest sea.