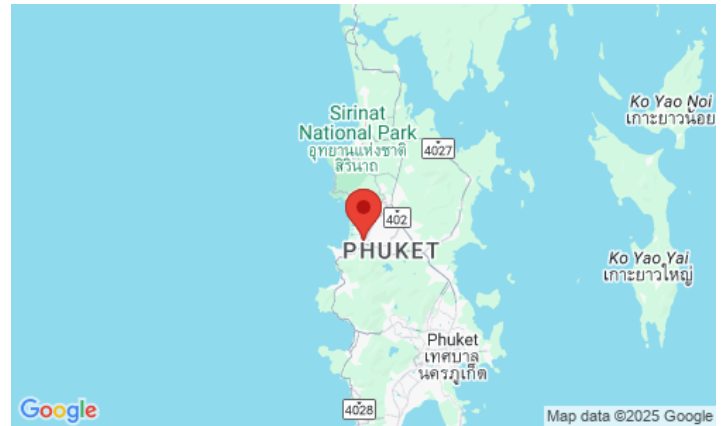
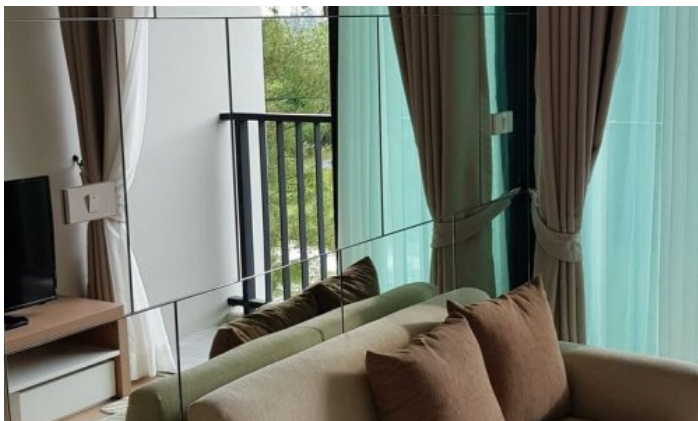


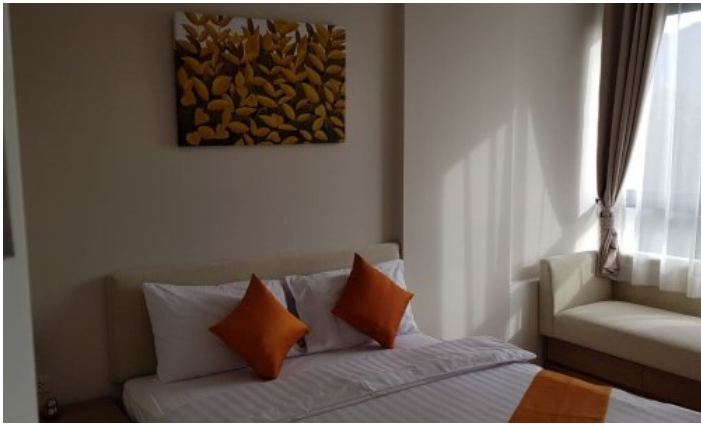
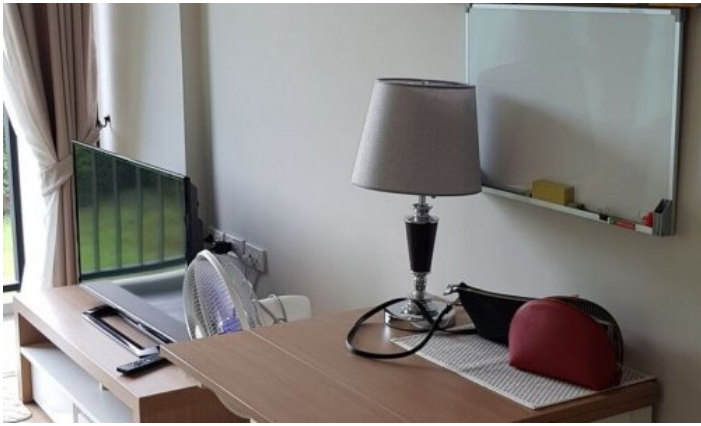
## ID2460 STYLISH 1-BEDROOM APARTMENTS, WITH URBAN VIEW IN ZCAPE 1 CONDOMINIUM PROJECT, ON BANGTAO/LAGUNA BEACH



<b>Deal type</b>	Rent	<b>Bathrooms</b>	1
<b>Property type</b>	Apartments	<b>Total area, m<sup>2</sup></b>	30
<b>Stage</b>	Completed	<b>View</b>	Urban View
<b>Completion date</b>	2014	<b>Floors</b>	7
<b>To the beach, m</b>	1900	<b>Furniture</b>	Furnished
<b>Bedrooms</b>	1	<b>Listed by</b>	Company
<b>Guests</b>	2		

Periods	Day, THB	3 Days, THB	Week, THB	2 Weeks, THB	Month, THB
01.05 - 31.10	1 400	4 200	9 100	16 100	28 000
01.11 - 30.11	2 300	6 000	13 000	23 000	40 000
01.12 - 31.01	2 500	7 500	16 250	28 750	50 000
01.02 - 30.04	2 300	6 000	13 000	23 000	40 000





Zcape 1 is located within Laguna Phuket Hotel & Resort. It was built in 2014 and has since been one of the most sought after and budget condominiums in Laguna. The complex itself consists of 7-storey buildings, in the housing stock - studio apartments and one-room apartments. A total of 198 apartments in the complex are made in the same style. The apartments offer magnificent views of the city and mountains. The main advantage of this apartment is its location. The condominium is just a minute's walk from the Villa Market supermarket and is surrounded by restaurants, cafés, bars, etc. You will rest in the heart of the tourist infrastructure and at the same time within a 15-minute walk from Bangtao Beach.

### **Infrastructure**

The condominium has a swimming pool with jacuzzi and children's area, fitness centre, covered parking, playground and security 24 hours a day. The condominium is located at the entrance of the bustling Boat Avenue near the entrance to the Laguna with its 5 \* hotels and unique landscape. This is especially convenient for families with small children.

### **What's nearby**

Zcape 1 is a 15-minute walk from Bangtao Beach. This beach is where Phuket's most popular beach clubs are located, such as Xana Beach Club, Dream Beach Club and Catch Club. Next to Cassia is the Laguna Phuket Golf Club, where international class tournaments are held. Inexperienced golfers can use the services of a personal golf coach. A minute's walk from Zcape 1 is the Boat Avenue shopping mall with a variety of shops, countless restaurants and bars, and a European supermarket Villa Market. The modern Porto De Phuket shopping complex, with countless restaurants, Tors supermarket, boutiques and food court, is just a short drive away. Nearby is the Lemonade kids club with a children's room and a pool for children, a hot sauna for adults. The bustling party scene of Patong is a 30-minute drive from the complex. The road from the airport to the complex will take about 25 minutes.

### **For whom is it suitable**

Zcape 1 is located in one of the most prestigious areas of Phuket with developed infrastructure and is one of the most sought after and budget condominiums in Laguna Phuket.