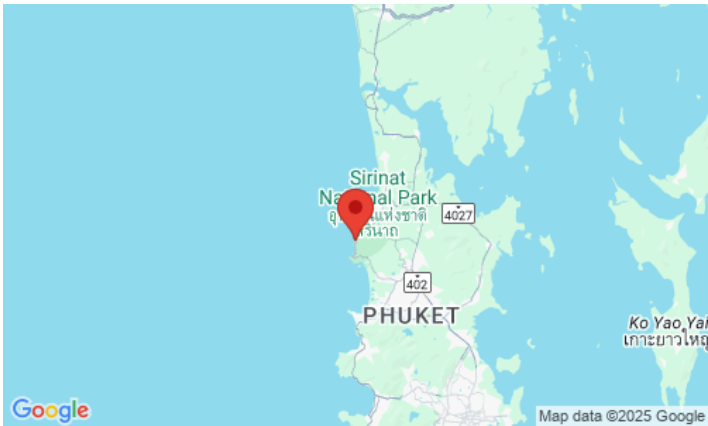


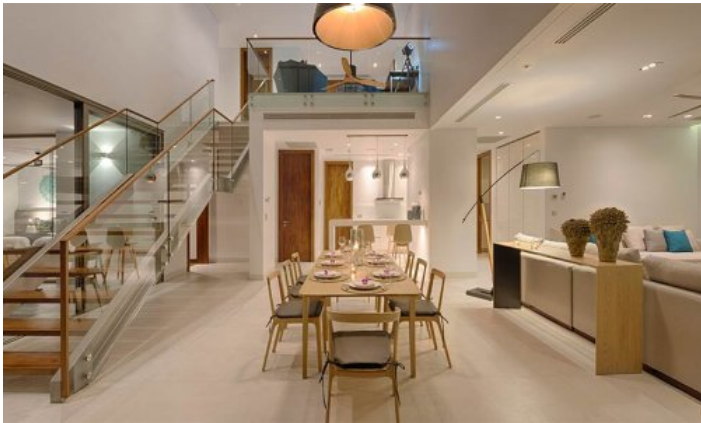
ID2464 ASTONISHING 4-BEDROOM APARTMENTS, WITH SEA VIEW AND NEAR THE SEA IN MALAIWANA PROJECT, ON NAITHON BEACH



Deal type	Rent	Bathrooms	4
Property type	Apartments	Total area, m ²	380
Stage	Completed	View	Sea View
Completion date	2015	Floors	2
To the beach, m	100	Furniture	Furnished
Bedrooms	4	Listed by	Company
Guests	8		

Periods	Day, THB	3 Days, THB	Week, THB	2 Weeks, THB	Month, THB
22.04 - 30.06	28 000	84 000	182 000	322 000	560 000
01.07 - 31.08	33 000	99 000	214 500	379 500	660 000
01.09 - 27.09	28 000	84 000	182 000	322 000	560 000
28.09 - 07.10	33 000	99 000	214 500	379 500	660 000
08.10 - 30.11	28 000	84 000	182 000	322 000	560 000
01.12 - 13.12	33 000	99 000	214 500	379 500	660 000
14.12 - 20.12	36 500	109 500	237 250	419 750	730 000
21.12 - 13.01	55 500	166 500	360 750	638 250	1 110 000
14.01 - 21.04	36 500	109 500	237 250	419 750	730 000





Malaiwana is a contemporary luxury tropical villa project. The villas offer panoramic sea views, where you can watch the magnificent sunsets of the Andaman Sea. The project is considered one of the best residential developments on the island. Attention to detail and meticulous workmanship have set new standards for luxury tropical living.

Comprising just 12 stunning private villas and 4 penthouses and 8 duplexes, Malaiwana Residences embody a fresh and innovative approach to tropical apartment living, offering villa-scale accommodation with the convenience of an apartment to owners.

Infrastructure

You will experience the luxury and 5-star services of a professional team, be it different types of food, Thai and international dishes from the chef, relax in the health and beauty spas. The project area is under 24-hour security and video surveillance.

What's nearby

The project is located on the first line of the sea, just 50 meters from Naithon Beach - one of the most beautiful and calm beaches in Phuket. A gracefully curved bay, soft white sand and ideal water temperatures are at your disposal 24 hours a day. Just imagine how convenient it is, because you no longer have to waste precious time on the road to the sea. The desire to bathe will be immediately realized. The ocean will become your faithful companion throughout the rest, opening up all its potential in front of you! The entire tourist infrastructure, such as massage, shops, markets, cafés, restaurants and bars is located along the first coastline, you can reach any of these locations in a maximum of 10 minutes on foot.

The project is conveniently located just 10 minutes from Phuket International Airport and 15 minutes from 4 world-famous golf clubs at a distance of 10-15 minutes by car there are 4 large supermarkets: Makro, Tesco Lotus, Villa Market and Porto de Phuket. And also the world-famous resort Laguna Phuket.

Who suits

An atmosphere of luxury and comfort. Ideal for people who prefer a private holiday, as well as lovers of a measured beach holiday with the cleanest sea.