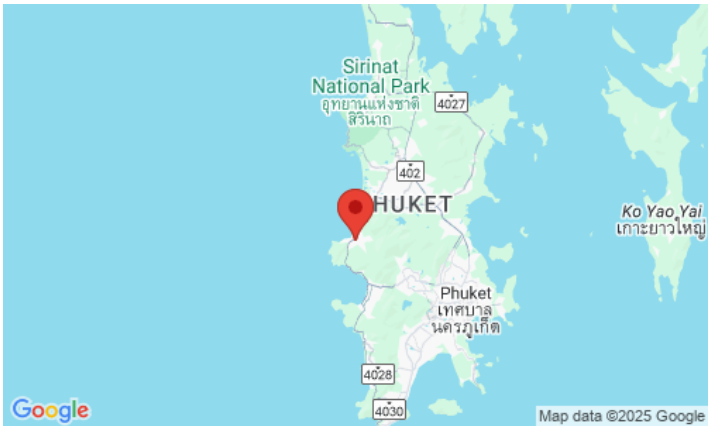
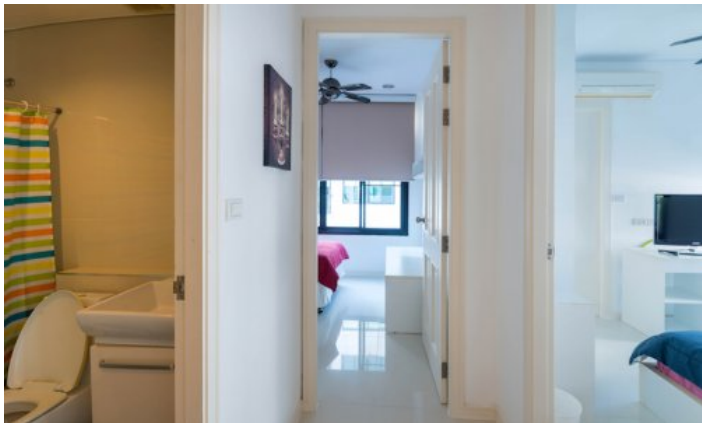


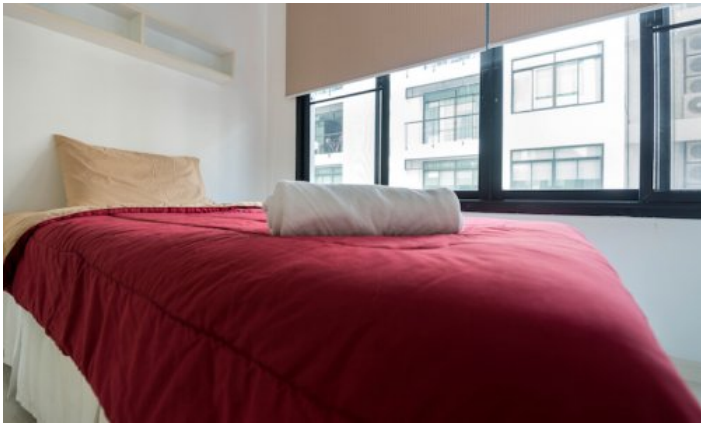
**ID2575 COMFORTABLE 3-BEDROOM APARTMENTS, WITH POOL VIEW IN REGENT KAMALA PROJECT, ON KAMALA BEACH BEACH**



Deal type	Rent	Bathrooms	2
Property type	Apartments	Total area, m <sup>2</sup>	95
Stage	Completed	View	Pool view, Mountain View
Completion date	2006	Floors	5
To the beach, m	2000	Furniture	Furnished
Bedrooms	3	Listed by	Private person
Guests	5		

Periods	Day, THB	3 Days, THB	Week, THB	2 Weeks, THB	Month, THB
16.04 - 31.10	5 300	12 000	30 000	46 000	80 000
01.11 - 30.11	8 500	15 000	45 000	57 500	100 000
01.12 - 28.02	11 000	20 250	60 000	77 625	135 000
01.03 - 15.04	8 500	15 000	45 000	57 500	100 000





**Description of the project**

Regent Kamala, low-rise condominium on Kamala beach. Consists of 4 buildings and spacious apartments. The condominium was built surrounded by nature, each apartment offers beautiful mountain views, there are also apartments with access to the pool.

**Infrastructure**

The complex has a communal pool, fitness center, sauna, restaurant and parking. The project is under 24-hour security and video surveillance.

**What's nearby**

Phuket International Airport is located just 18 km from the hotel complex. The city center is 20 km away. You can get to the resort town of Kamala in just 5 minutes, where there are many shops, cafes, restaurants, beach clubs such as the world famous Cafe Del Mar, PINE Beach Club at Intercontinental Hotel, HQ Beach Club. Phuket FantaSea Theme Park is close by (1.4 km).

**For whom is it suitable**

Suitable for investment, short-term or long-term stays of small families and couples.