

ID2597 LUXURIOUS 2-BEDROOM APARTMENTS, WITH POOL VIEW IN LAGO PROJECT, ON NAI HARN BEACH

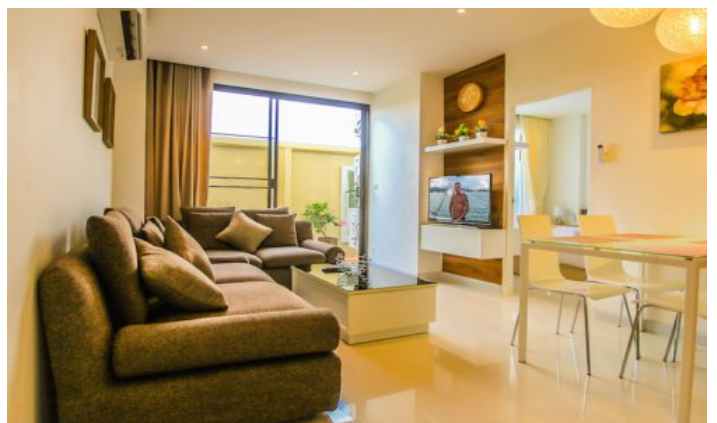
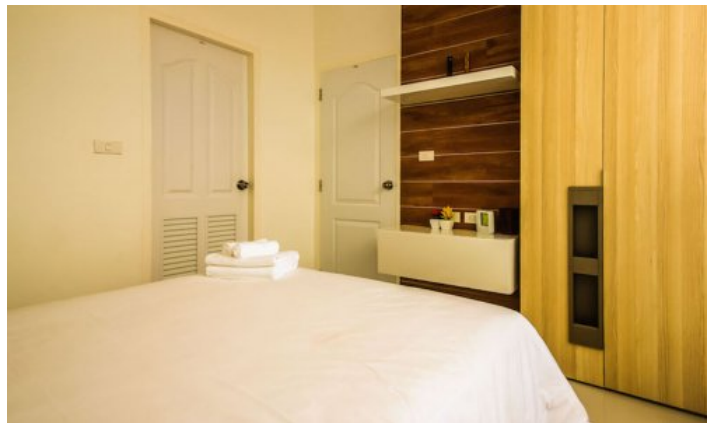
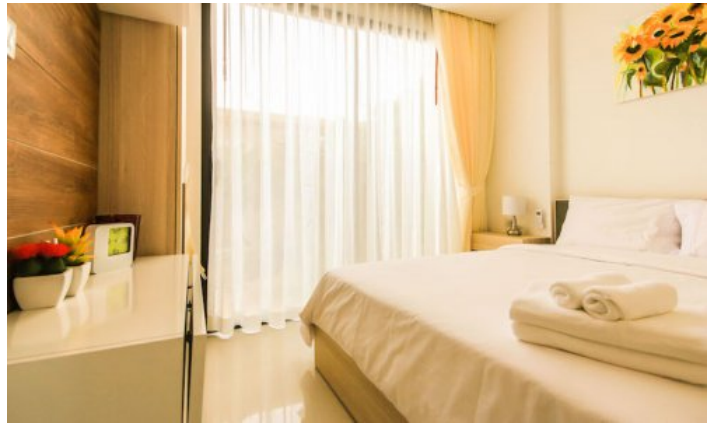


Deal type	Rent
Property type	Apartments
Stage	Completed
Completion date	2016
To the beach, m	300
Bedrooms	2
Guests	4

Bathrooms	1
Total area, m²	58
View	Pool view, Mountain View
Floors	4
Furniture	Furnished
Listed by	Company

Periods	Day, THB	3 Days, THB	Week, THB	2 Weeks, THB	Month, THB
01.05 - 31.10	2 000	6 000	15 000	23 000	40 000
01.12 - 28.02	8 500	25 500	25 000	97 750	170 000
01.03 - 30.04	11 000	33 000	71 500	126 500	220 000





Description of the project infrastructure

Condominium Lago Condo is located in the south of Phuket, just a 5-minute walk from the picturesque Nai Harn Beach with its developed infrastructure. The complex consists of 72 apartments located in three buildings on 4 floors. The condo has its own infrastructure, including a huge 53 meter swimming pool, parking, fitness room, security 24 hours a day and a management company office on the territory of the complex.

Lago Condo offers two different types of 1 and 2 bedroom apartments ranging from 47 to 68 sq. The 57 sq.m. apartment has two bedrooms, a living room and a kitchen. Each bedroom has double beds. The kitchen is equipped with everything needed for a comfortable stay and is combined with a dining area and a living room with a sofa and TV with cable channels. And you can enjoy a cup of morning coffee on the balcony with an incredibly picturesque view of the mountains.

What's nearby

Shops, restaurants and massages are within walking distance.

One of the best beaches - Naiharn is located 300 meters from the project. The beach is popular with families with children and expats, so you will not find a large crowd of tourists here. A stone's throw from the beach, there is a freshwater lake and an observation deck with windmills. Nai Harn Beach is popular with families with children, as well as with winterers and long-livers of the island. It is comfortable to spend your vacation here, because nearby there are many restaurants like European and national Thai cuisine. There are also offices with transport rental and excursion services. For a long stay on Naiharn, it is comfortable to live for families with children - there are international and Thai kindergartens, international and Russian schools nearby. The way from Naiharn to the popular children's play complex "Rawai Park" will take 5 minutes by car or bike.

Naiharn is also often chosen for yoga tours or sports campings. At Naiharn and in the neighboring Rawai district, there are gyms, specialized rings for Thai boxing and workout grounds. A 10-minute drive away there is a hyper market Makro, a supermarket with European products Villa Market, a fish market. The maximum number of schools and kindergartens is also concentrated in this area.

For whom is it suitable

The complex is ideal for lovers of walking distance to the beach and those who do not drive vehicles, ideal for families with children and for couples and companies of any age. The apartments in the project are available for both short vacations and long term rentals.