

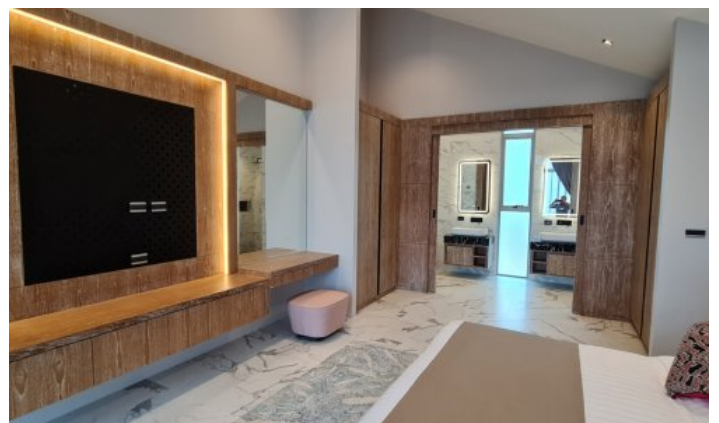
ID2721 AMAZING 3-BEDROOM VILLA, WITH POOL VIEW IN GRAND VIEW RESIDENCES PROJECT, ON BANGTAO/LAGUNA BEACH



Price 14 500 000 THB (425 575 USD)

| | | | |
|----------------------------------|------------|---------------------------------|---|
| Deal type | Sale | Land area, m² | 294 |
| Property type | Villa | View | Pool view, Garden view |
| Stage | Completed | Floors | 2 |
| Completion date | 2020 | Furniture | Built-in furniture |
| To the beach, m | 5400 | Listed by | Developer |
| Bedrooms | 3 | Ownership | Foreign Freehold, Thai Freehold, Leasehold, Company |
| Bathrooms | 3 | Land ownership | Thai Freehold, Leasehold, Company |
| Total area, m² | 304 | Title deed | Chanote |
| Price per sqm | 47 697 THB | Guaranteed income | 6% |
| CAM Fees per sqm | 25 THB | | |





Grand View Residences Lagoon

Project Description

Grand View Residences Lagoon is a brand-new and unique project featuring 18 villas nestled amidst the serene mountains between Bang Tao and Surin. These villas combine luxury, affordability, and harmony with Phuket's stunning natural beauty. Each villa offers breathtaking views of the mountain range, with a living area of at least 280 sqm and land plots starting from 390 sqm.

Key Features:

- Spacious two-story villas with 7-meter-high ceilings.
- Large private swimming pools.
- Fully equipped European-style kitchens.
- Bedrooms furnished with beds, mattresses, and built-in wardrobes.
- High-quality finishes, including ceramic, granite, and natural tiles.

The developer has a proven track record with previous successful projects like Diamond and Diamond Tree Villas, known for their excellent design and construction quality.

Infrastructure

The complex features 24-hour security to ensure the safety and peace of mind of its residents.

Nearby Attractions

• Beaches:

- Bang Tao and Surin beaches are just a 7-minute drive away.
- These beaches are home to popular clubs like Xana Beach Club, Dream Beach Club, Catch Club, and the beloved Maya Beach Club.

• Entertainment and Sports:

- Within walking distance: tennis courts, restaurants, shops, and beauty salons.
- Blue Tree entertainment complex is a 10-minute drive away. It includes a water park with various attractions, a kids' club, a fitness area, a shopping center, restaurants, and food stalls. Blue Tree is one of Phuket's top attractions, ideal for visitors of all ages, especially families.

• Shopping Centers:

- **Boat Avenue:** A vibrant shopping and dining destination with restaurants, bars, stores, and the Villa Market supermarket offering European products.

- **Porto De Phuket:** A modern shopping center featuring restaurants, boutiques, the Tops supermarket, and a food court.

• For Kids:

- The nearby Lemonade Kids Club offers a playroom, a children's pool, and a sauna for adults.

• Additional:

- Patong, the island's lively party district, is a 30-minute drive away.
- Phuket International Airport is only a 25-minute drive from the complex.

Who It's For

This complex is perfect for discerning buyers seeking luxury villas close to Bang Tao Beach and the area's extensive infrastructure.