

**ID2751 GORGEOUS PREMIUM, LARGE 5-BEDROOM VILLA, WITH SEA VIEW AND NEAR THE SEA IN THE BAY PROJECT, ON POINT YAMU BEACH**

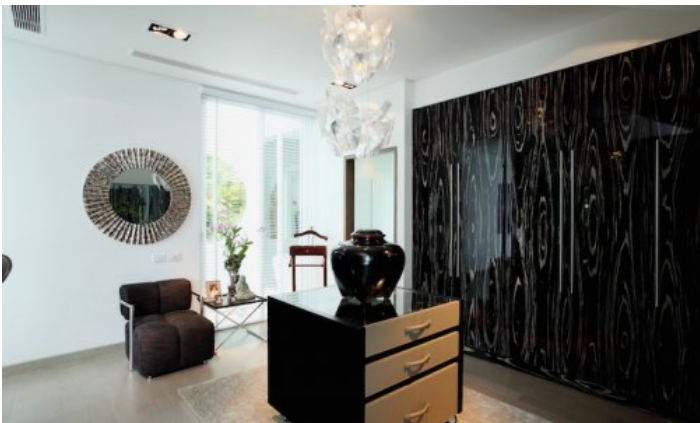


<b>Deal type</b>	Rent	<b>Bathrooms</b>	4
<b>Property type</b>	Villa	<b>Total area, m<sup>2</sup></b>	1520
<b>Stage</b>	Completed	<b>Land area, m<sup>2</sup></b>	920
<b>Completion date</b>	2010	<b>View</b>	Sea View
<b>To the beach, m</b>	100	<b>Floors</b>	2
<b>Bedrooms</b>	5	<b>Furniture</b>	Furnished
<b>Guests</b>	10	<b>Listed by</b>	Company

Periods	Day, THB	3 Days, THB	Week, THB	2 Weeks, THB	Month, THB
19.04 - 14.08	45 000	135 000	292 500	517 500	900 000
15.08 - 21.12	50 000	150 000	325 000	575 000	1 000 000
22.12 - 12.01	95 000	285 000	617 500	1 092 500	1 900 000
13.01 - 19.01	55 000	165 000	357 500	632 500	1 100 000
20.01 - 30.01	65 000	195 000	422 500	747 500	1 300 000
01.02 - 03.04	65 000	195 000	422 500	747 500	1 300 000
04.04 - 18.04	55 000	165 000	357 500	632 500	1 100 000







The project consists of villas located on the fabulous Cape Yamu peninsula. This elegant project of just 16 villas boasts some of the best views in Phuket while ensuring privacy and security. A prime property that is unlikely to ever be cluttered with competing developments in the area. Designed by KplusK Associates in Hong Kong, these contemporary tropical homes are built with the finest materials including Thai granite, custom glass, stoneware, exquisite local wood, and locally sourced terrazzo. The Bay @ Cape Yamu is the award-winning developer Campbell Kane (Thailand) Ltd, developer of luxury hotels Cape Yamu and The Yamu; in cooperation with the Lippo Group one of the largest real estate developers in Asia.

### **Infrastructure**

It offers a club, round-the-clock security, video surveillance, direct access to the beach.

### **What's nearby**

The complex is located on the east coast of the island in the area of Cape Yamu, offering stunning views of Phang Nga Bay and the islands. Although you feel away from the hustle and bustle of the island's central areas, the villas are just 10-20 minutes from the international airport, world-class golf courses, international hospital, British International College Thailand, Boat Lagoon Marina and downtown Phuket with a wide variety of shops, cinemas and restaurants. The gourmet restaurants of the nearby COMO tourist resort, where you will also find a gym and a wellness spa, will brighten up your vacation and stay in the villa. Explore the sea by speedboat and take unique shots on nearby islands! Plan an excursion to Old Phuket Town and a souvenir trip to Central Festival Shopping Center. And lovers of nightclubs and bars should definitely visit the establishments on Bangla Road - then your vacation in Phuket will definitely never be forgotten!

### **For whom is it suitable**

An ideal place for those who want to take a break from the city, surrounded by tranquility and tranquility.