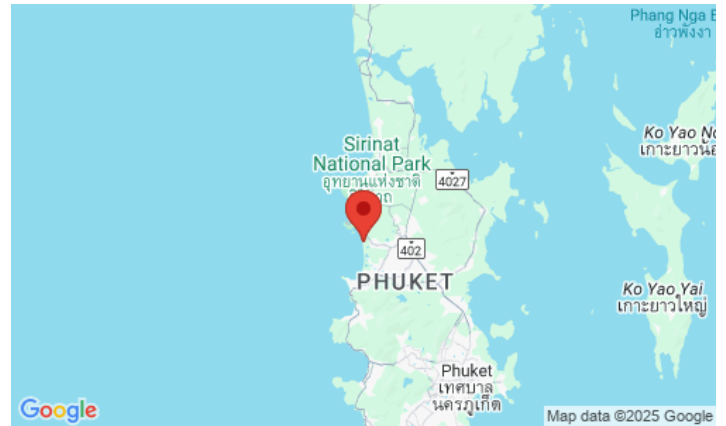
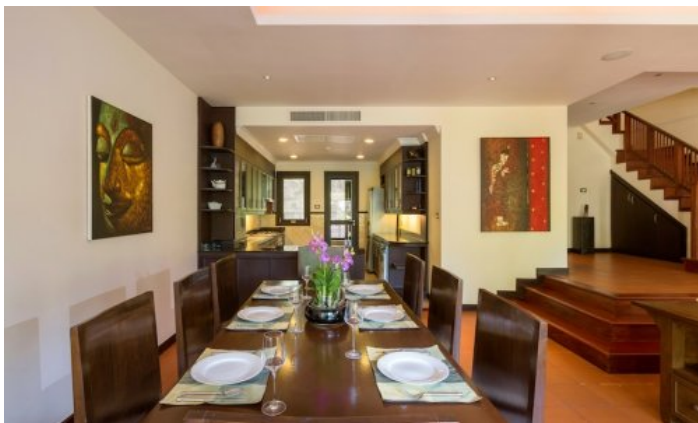


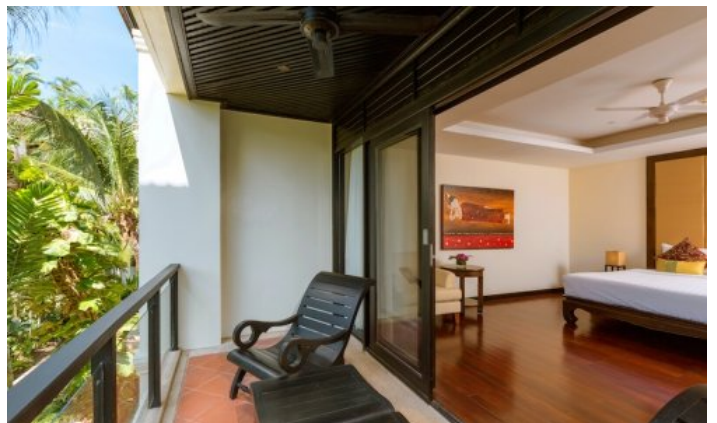
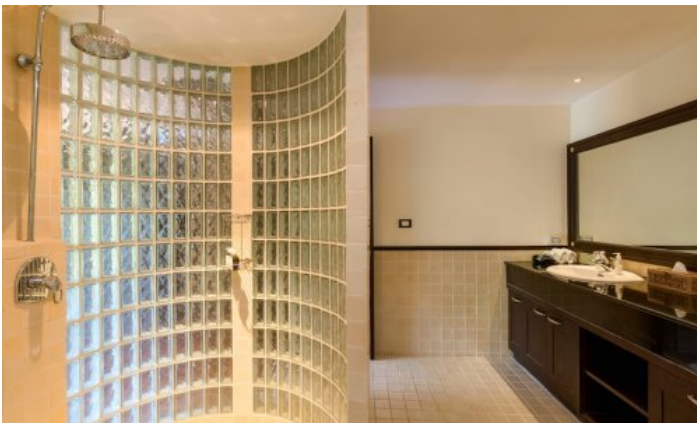
ID2790 GORGEOUS 2-BEDROOM APARTMENTS, WITH POOL VIEW AND NEAR THE SEA IN MAAN TAWAN PROJECT, ON BANGTAO/LAGUNA BEACH



Price 11 500 000 THB (337 525 USD)

Deal type	Sale	Price per sqm	34 328 THB
Property type	Apartments	CAM Fees per month	12 000 THB
Stage	Completed	View	Pool view, Garden view
Completion date	2004	Floor	2
To the beach, m	50	Floors	2
Bedrooms	2	Furniture	Furnished
Bathrooms	2	Listed by	Private person
Total area, m²	335	Ownership	Leasehold





A rarity for Phuket - the first line from the sea! Maan Tawan is a complex of cozy spacious apartments and villas with beautiful views located 50 meters from Bangtao Beach. Near the complex you may find the famous Laguna Complex, Banyan Tree Hotel and much more. The project consists of 20 luxury villas and 24 spacious apartments. Built in Thai tropical style: massive furniture, lots of greenery, trees and winding paths among the palm trees. Just a 5-minute drive away is the Boat avenue shopping center, where there is a large selection of restaurants, shops, the Villa Market food supermarket and much more.

Infrastructure

Maan Tawan project is a small well-groomed town with paths for walks immersed in greenery and green lawns between houses. The project is guarded around the clock, the office of the service company is also located here.

What's nearby

The 8 km long Bangtao Beach is within walking distance of the Maan Tawan Project. This beach is home to Phuket's most popular beach clubs such as Xana Beach Club, Dream Beach Club and Catch Club. Next to Maan Tawan is the Laguna Phuket Golf Club, which hosts international tournaments. Inexperienced golfers can use the services of a personal golf coach. Nearby there is Boat Avenue shopping complex with a variety of shops, countless restaurants and bars, and the Villa Market supermarket for European products. The modern Porto De Phuket shopping complex, with countless restaurants, Tors supermarket, boutiques and food court, is just a short walk away. Nearby is the Lemonade Kids Club with a children's room and a pool for children, a hot sauna for adults. The bustling party scene of Patong is a 25-minute drive from the complex. The road from the airport to the complex will take about 30 minutes. This location makes Maan Tawan one of the most desirable and popular residential complexes for both tourists and expats.

For whom is it suitable

The location of the buildings and villas ensures complete privacy, which is why the wealthy guests of the island like to relax here. The large size of the villas attracts large families with children and nannies. And the peculiarity of the layout with private, non-contiguous bedrooms is liked by large campaigns from several families.