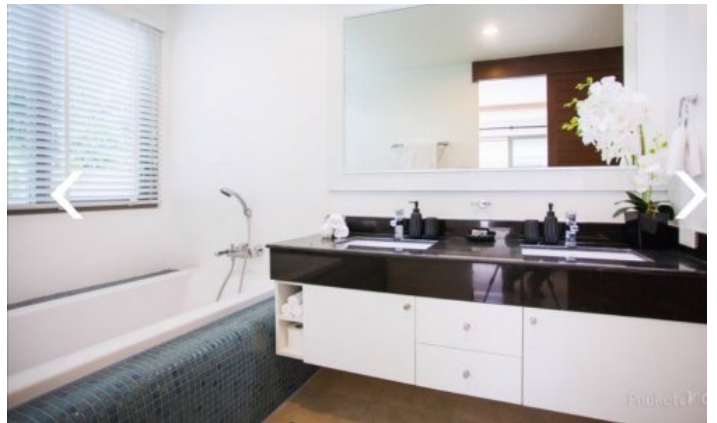


**ID2841 ASTONISHING 3-BEDROOM VILLA, WITH POOL VIEW IN BOTANICA BANGTAO BEACH PROJECT, ON BANGTAO/LAGUNA BEACH**



**Price 13 900 000 THB (407 965 USD)**

<b>Deal type</b>	Sale	<b>Price per sqm</b>	42 507 THB
<b>Property type</b>	Villa	<b>Land area, m²</b>	512
<b>Stage</b>	Completed	<b>View</b>	Pool view
<b>Completion date</b>	2020	<b>Floors</b>	1
<b>To the beach, m</b>	1000	<b>Furniture</b>	Built-in furniture
<b>Bedrooms</b>	3	<b>Ownership</b>	Foreign Freehold
<b>Bathrooms</b>	4	<b>Land ownership</b>	Leasehold
<b>Total area, m²</b>	327		







The ultra-modern complex of 23 villas with round-the-clock security, in the tropical style Botanica Bangtao Beach is located in a secluded picturesque place near the Laguna resort complex, with its developed infrastructure: numerous gourmet restaurants, bars, shops, boutiques, massage and spa salons.

Botanica in all its projects remains true to its special style, the perfect combination of Balinese architecture, European quality and Thai rhythm of life. The 3 and 4-bedroom villas offer pool access, teak ceilings with neutral tiling, and eye-catching and accents. Luxurious wood floors and teak beams extending into suspended ceilings make the space warm and inviting, while glass sliding doors - partitions fill the room with light. Each of the bedrooms has its own private bathroom. Cozy pool gazebo, garden and private rooftop parking.

### **What's nearby**

Botanica Bangtao Beach is a 10-minute walk to Bangtao Beach. This beach is where Phuket's most popular beach clubs are located, such as Xana Beach Club, Dream Beach Club and Catch Club. Not far from Botanica Bangtao Beach, the Blue Tree is located - this is a large entertainment complex that includes: the actual lagoon of the water park with various attractions on water and land, several large parking lots, a helipad, a kids club, a fitness area, a shopping center, restaurants and mobile tents with food. Blue tree Phuket Water Park opened its doors in the fall of 2019 in the north of the island, not far from Bangtao Beach. And he is already one of the top attractions in Phuket. The park is suitable for visitors of all ages, especially children. An active day for the whole family is guaranteed! A 10-minute drive from Botanica Bangtao Beach is Boat Avenue, a shopping complex with a myriad of shops, countless restaurants and bars, and Villa Market, a European supermarket. The modern Porto De Phuket shopping complex, with countless restaurants, Tors supermarket, boutiques and food court, is just a short drive away. Nearby is the Lemonade Kids Club with a children's room and a pool for children, a hot sauna for adults. The bustling party scene of Patong is a 30-minute drive from the complex. The road from the airport to the complex will take about 25 minutes.

### **For whom is it suitable**

The complex will satisfy the requirements of the most discerning tourists who prefer luxury villas in close proximity to Bangtao Beach.