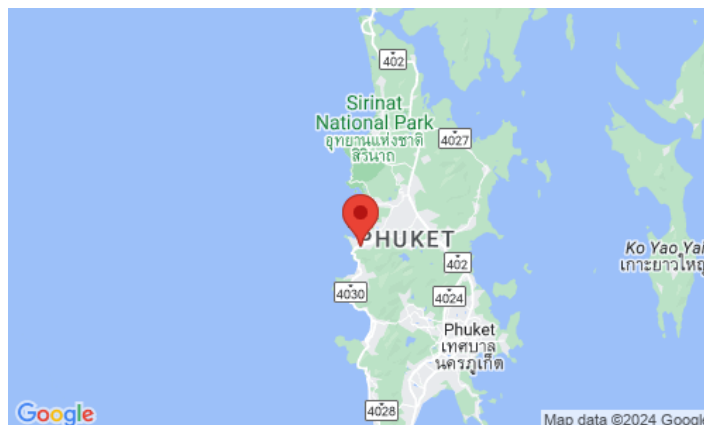
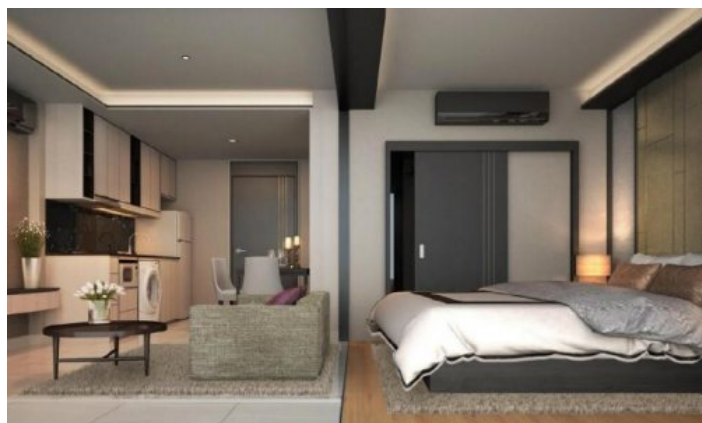
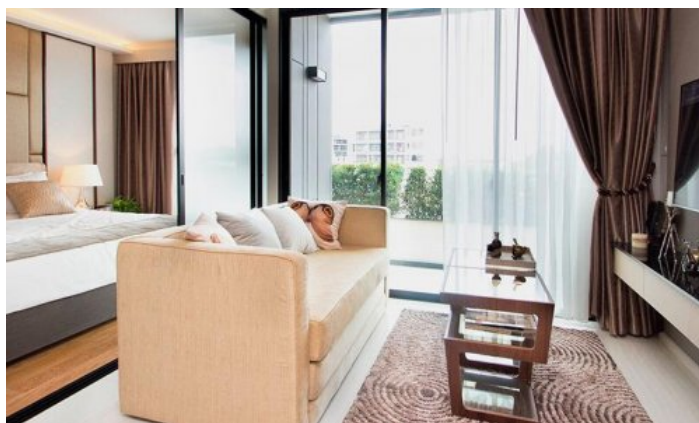
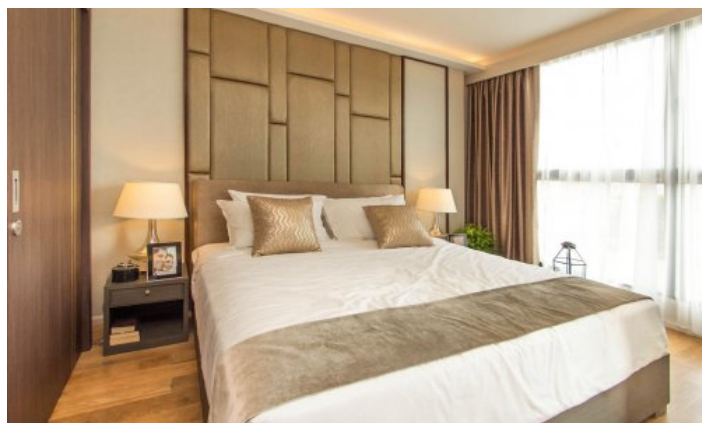


## ID2842 GORGEOUS 1-BEDROOM APARTMENTS, WITH MOUNTAIN VIEW IN PANORA SURIN PROJECT, ON SURIN BEACH BEACH



**Price 5 500 000 THB (0 USD)**

|                                  |            |                          |                |
|----------------------------------|------------|--------------------------|----------------|
| <b>Deal type</b>                 | Sale       | <b>Price per sqm</b>     | 152 777 THB    |
| <b>Property type</b>             | Apartments | <b>CAM Fees per sqm</b>  | 50 THB         |
| <b>Stage</b>                     | Completed  | <b>View</b>              | Mountain View  |
| <b>Completion date</b>           | 2018       | <b>Floors</b>            | 8              |
| <b>To the beach, m</b>           | 1700       | <b>Furniture</b>         | Furnished      |
| <b>Bedrooms</b>                  | 1          | <b>Listed by</b>         | Private person |
| <b>Bathrooms</b>                 | 1          | <b>Ownership</b>         | Leasehold      |
| <b>Total area, m<sup>2</sup></b> | 36         | <b>Guaranteed income</b> | 7%             |





The new Panora condominium complex is located on a gentle hillside with stunning sea views, less than 10 minutes' walk from the beaches. Apartment types include one, two and three bedroom floor plans with stylish designs that combine modern amenities with traditional Thai accents. From the apartments on the third floor and above, you can enjoy a beautiful view of the sea. The complex is managed by a hotel and owners can join an optional rental program to maximise their return on investment.

### **Infrastructure**

Each building has its own hotel-style lobby and roof garden, as well as infinity pools in four of the five buildings. There are also two large swimming pools, children's pool, spa and sauna, fitness center and library, covered parking. You can take a free shuttle to the beach. The entrance to the territory of the complex is by electronic cards, as well as round-the-clock security and video surveillance.

### **What's nearby**

Ideal location, 10 minutes walk from Surin and Bangtao beaches, close to numerous restaurants, shops and cafes of Surin and Bang Tao. Surin Beach, which is approximately 1000 meters long, is very popular with tourists today. The beach is located on the territory of the bay among the picturesque and very unusual for tropical places of pine trees, in the shade of which you can hide from the midday heat. The beach is great for active tourists - you can surf in the summer season, and in the high season (November - April) snorkeling is good in the northern part of the beach. All the equipment you need can be rented or bought from a shop behind the main road. Near the complex are Siam Blue & Catch beach club, Tesco lotus express.

### **For whom is it suitable**

Ideal for young couples and young families who want convenient access to the exciting nightlife and entertainment that Phuket has to offer, but still be able to return to a peaceful environment with high-quality service that hotels in nightlife-focused areas simply cannot. can offer.