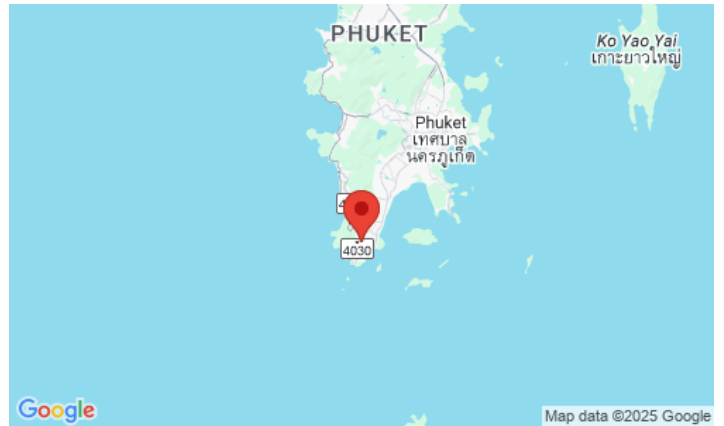
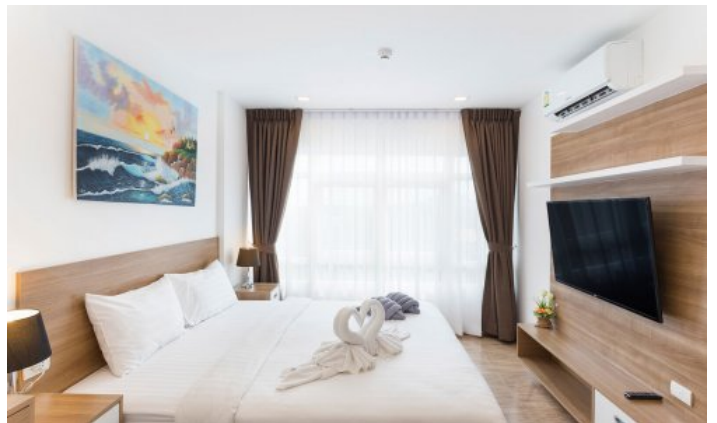


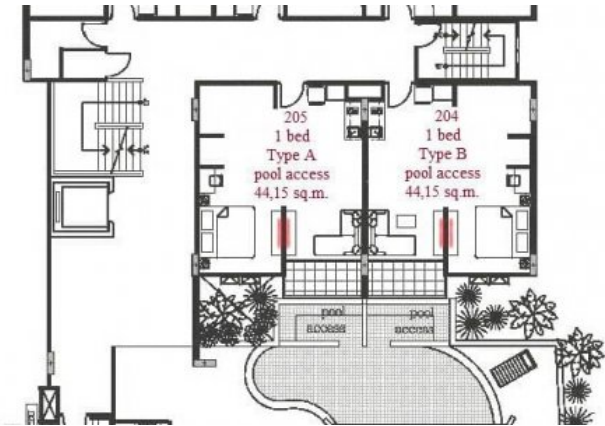
ID2969 INCREDIBLE 1-BEDROOM APARTMENTS, WITH POOL VIEW IN CALYPSO PROJECT, ON NAI HARN BEACH



Price 4 400 000 THB (0 USD)

Deal type	Sale	CAM Fees per month	4 500 THB
Property type	Apartments	Indoor area, m ²	42
Stage	Completed	View	Pool view
Completion date	2016	Floors	7
To the beach, m	1600	Furniture	Built-in furniture
Bedrooms	1	Listed by	Private person
Bathrooms	1	Ownership	Leasehold
Total area, m ²	42	Title deed	Chanote
Price per sqm	104 761 THB	Guaranteed income	7%





Calypso Condominium is located in the south of Phuket, a short walk from Naiharn Beach. The complex offers a choice of one-bedroom and two-bedroom apartments ranging from 33 sq. M, to luxury apartments with an area of 73 sq. M. The complex has 7 floors and 46 apartments. All apartments have an individual design developed specifically for this complex and high quality finishes. Spacious and incredibly cosy 62 sq. m consist of two separate bedrooms with a king-size bed, a living room combined with a fully equipped kitchen with a bar counter, a bathroom with a shower and a balcony with outdoor furniture.

The complex has a secure parking, swimming pool, reception and a small gym. Restaurants, supermarkets and massage parlours are located within a two-minute walk from the complex. A free shuttle bus runs to Yanui and Naiharn beaches.

What's nearby

One of the best beaches - Naiharn is located 1.2 kilometres from the project. The beach is popular with families with children and expats, so you will not find a large crowd of tourists here. A stone's throw from the beach, there is a freshwater lake and an observation deck with windmills. Nai Harn Beach is popular with families with children, as well as with winterers and long-livers of the island. It is comfortable to spend your holiday here, because Nearby there are many restaurants of both European and national Thai cuisine. There are also offices with transport rental and excursion services. For a long stay on Naiharn, it is comfortable to live for families with children - there are international and Thai kindergartens, international and Russian schools nearby. The way from Naiharn to the popular children's play complex "Rawai Park" will take 5 minutes by car or bike.

Naiharn is also often chosen for yoga tours or sports campings. At Naiharn and in the neighboring Rawai district, there are gyms, specialized rings for Thai boxing and workout grounds. A 10-minute drive away is a Macro hypermarket, a supermarket with European products Villa Market, a fish market.

For whom is it suitable

The complex is ideal for absolutely all categories of tourists. The complex is especially in demand among families with children, young and old couples. The apartments in the project are available for both short vacations and long term rentals.