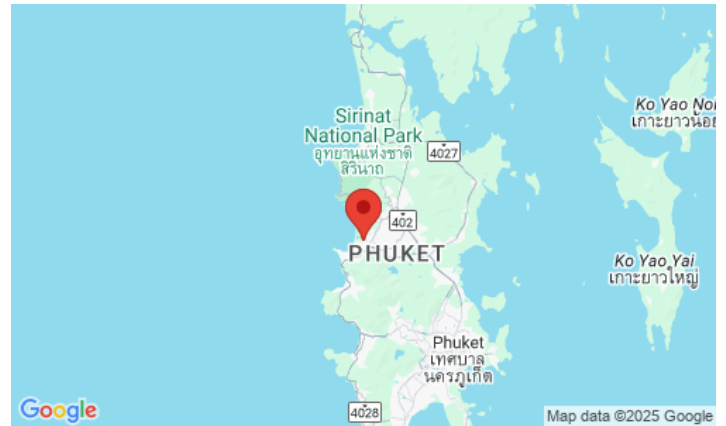
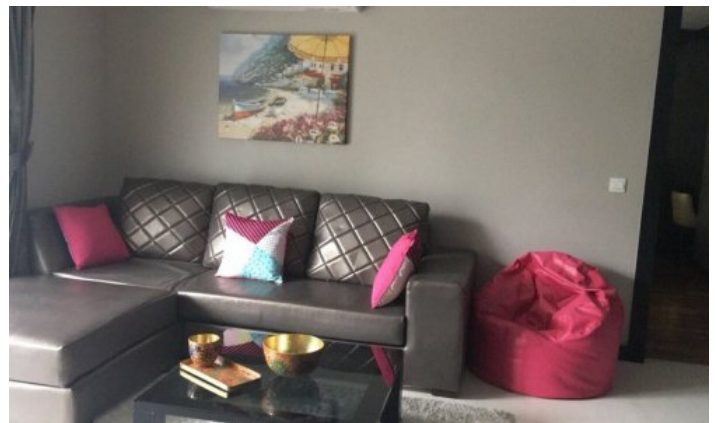


ID4069 FASHIONABLE 2-BEDROOM APARTMENTS, WITH URBAN VIEW IN THE REGENT BANGTAO PROJECT, ON BANGTAO/LAGUNA BEACH



Price 9 500 000 THB (0 USD) 11 500 000 THB

Deal type	Sale	Price per sqm	67 857 THB
Property type	Apartments	View	Urban View
Stage	Completed	Floor	1
Completion date	2015	Floors	6
To the beach, m	1200	Furniture	Furnished
Bedrooms	2	Listed by	Private person
Bathrooms	2	Ownership	Foreign Freehold
Total area, m²	140	Title deed	Chanote





Regent Bangtao is one of the most beautiful condominiums in Phuket. Regent Bangtao uses the concept of condo hotels, which are designed for holiday and investment, short or long term stays. The hotel consists of 2 buildings with a total of 151 apartments. Apartments have different formats - studios, one-room apartments and very spacious apartments with two or even three bedrooms. Comfortable layouts, built-in furniture, modern finishes with warm beige and brown tones. A special feature of the project is a jacuzzi installed on the balcony of almost every apartment.

Infrastructure

The condo hotel has all the amenities required for a 4-5 * hotel, such as a lobby, lounge, café, restaurant, gym and spa, as well as a large swimming pool, sun loungers, free parking.

What's nearby

The Regent Bangtao complex is very convenient for all tourist points of attraction: just a 10-minute walk from Bangtao beach, literally a couple of minutes to the Laguna resort complex and the same to the entire infrastructure of the area. Bangtao Beach is home to Phuket's most popular beach clubs such as Xana Beach Club, Dream Beach Club and Catch Club. Next to The Regent Bangtao is the Laguna Phuket Golf Club, which hosts international tournaments.

Inexperienced golfers can use the services of a personal golf coach. A 5-minute walk from the complex is the Boat Avenue shopping complex with many shops, countless restaurants and bars, Villa Market supermarket of European products. The modern Porto De Phuket shopping complex, with countless restaurants, Tors supermarket, boutiques and food court, is just a short drive away. Nearby is the Lemonade kids club with a children's room and a pool for children, a hot sauna for adults. The bustling party scene of Patong is a 30-minute drive from the complex. The road from the airport to the complex will take about 25 minutes.

For whom is it suitable

Regent Bangtao is located in one of the most prestigious areas of Phuket with developed infrastructure. Therefore, the project is suitable for all those who love a measured holiday surrounded by beautiful landscapes, appreciate a good location, high-quality housing. Young families and people of venerable age feel equally comfortable here. Ideal for families and for long-term or permanent residence.