

**ID4228 STYLISH, SPACIOUS 3-BEDROOM VILLA, WITH POOL VIEW IN TRICHADA SKY PROJECT, ON BANGTAO/LAGUNA BEACH**

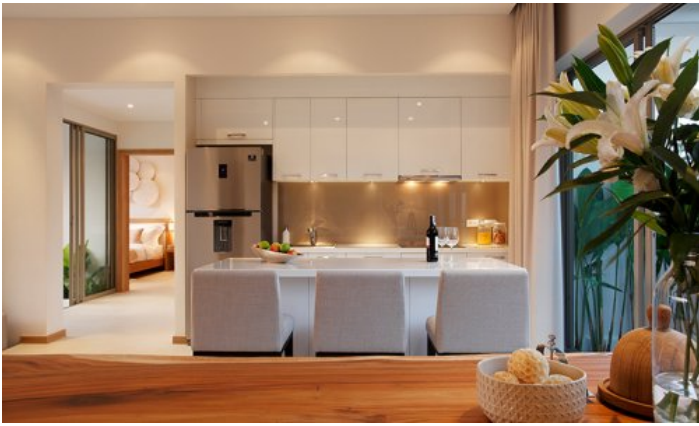


**Price 18 334 668 THB (0 USD)**

<b>Deal type</b>	Sale	<b>CAM Fees per month</b>	16 500 THB
<b>Property type</b>	Villa	<b>Indoor area, m<sup>2</sup></b>	281
<b>Stage</b>	Completed	<b>Land area, m<sup>2</sup></b>	476
<b>Completion date</b>	2021	<b>View</b>	Pool view, Garden view
<b>To the beach, m</b>	3400	<b>Floors</b>	1
<b>Bedrooms</b>	3	<b>Listed by</b>	Developer
<b>Bathrooms</b>	3	<b>Ownership</b>	Foreign Freehold, Thai Freehold, Leasehold, Company
<b>Total area, m<sup>2</sup></b>	476	<b>Land ownership</b>	Thai Freehold, Leasehold, Company
<b>Price per sqm</b>	38 518 THB		







Trichada Sky Villas is a new 3 project of the Developer, it consists of modern villas with high quality. The project is calm and quiet due to its location, away from the hustle and bustle of the more congested areas of Phuket. The architecture is simple and fresh, with a white color palette and many tropical plants and flowers. You can enjoy a sun lounger outdoors or dine with your family in the al fresco dining area. Trichada consists of one-story pool villas set in lush tropical gardens. Villas consist of 2 or 3 bedrooms, ranging from 100 to 150 sq. m., which are located on a plot ranging from 280 to 490 sq. m., respectively, each with its own swimming pool and parking. The concept of the project is to provide a relaxing atmosphere and feel at home. The developer has developed a plan for the one-story villas in order to provide you with the complete privacy of your home in Phuket. Security gate 24 hours.

### **What's nearby**

Trichada Complex is a 10-minute drive from Bangtao Beach. This beach is where Phuket's most popular beach clubs are located, such as Xana Beach Club, Dream Beach Club and Catch Club. Not far from Trichada, Blue Tree is located - this is a large entertainment complex that includes: the lagoon of the water park itself with various attractions on water and land, several large parking lots, a helipad, a kids club, a fitness area, a shopping center, restaurants and mobile tents with food ... Blue tree Phuket Water Park opened its doors in the fall of 2019 in the north of the island, not far from Bangtao Beach. And he is already one of the top attractions in Phuket. The park is suitable for visitors of all ages, especially children. An active day for the whole family is guaranteed! Boat Avenue is a 10-minute drive from Trichada, with a variety of shops, countless restaurants and bars, and Villa Market, a European supermarket. The Porto De Phuket shopping complex, with countless restaurants, Tops supermarket, boutiques and food court, is just a short drive away. Nearby is the Lemonade Kids Club with a children's room and a pool for children, a hot sauna for adults. The bustling party scene of Patong is a 30-minute drive from the complex. The road from the airport to the complex will take about 25 minutes.

### **For whom is it suitable**

This project is ideal for long stays for couples and families, as well as for vacations.