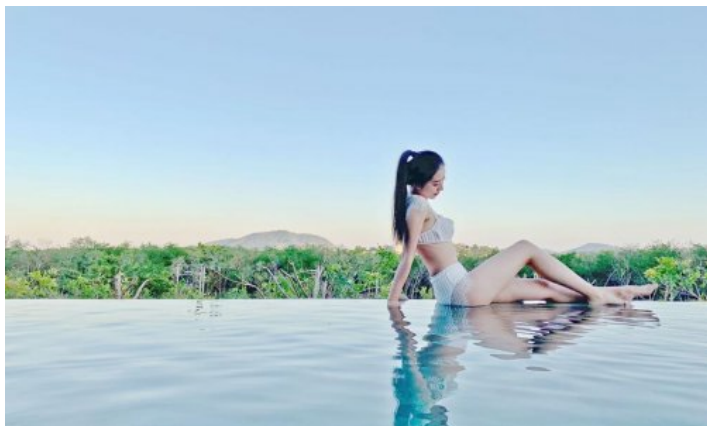
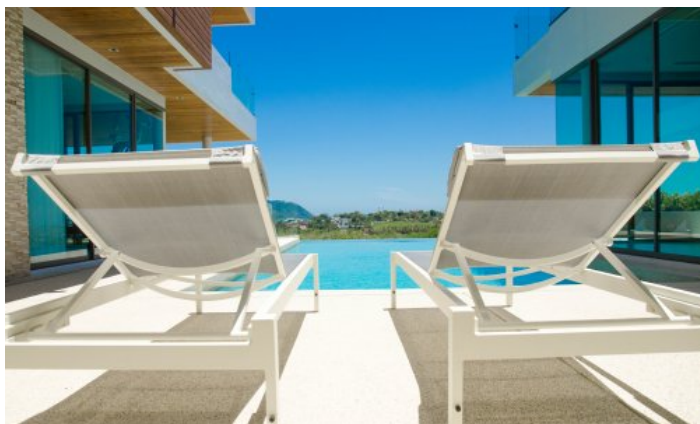


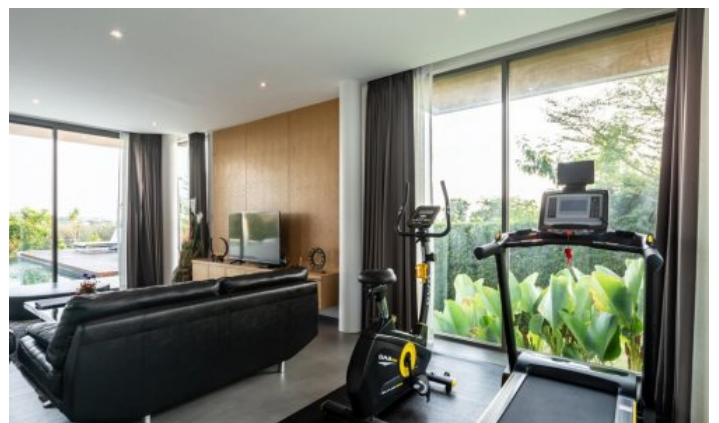
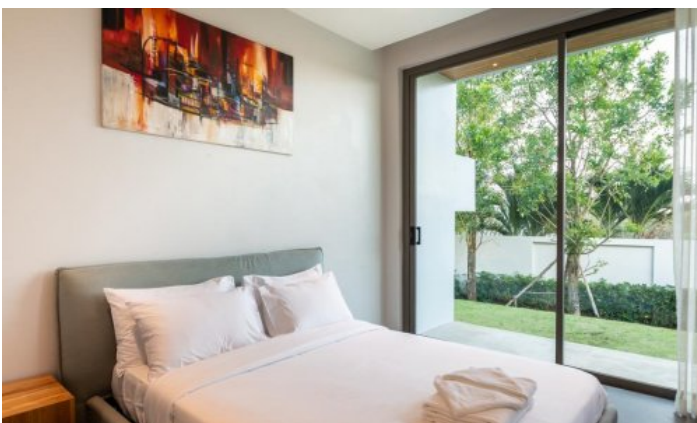
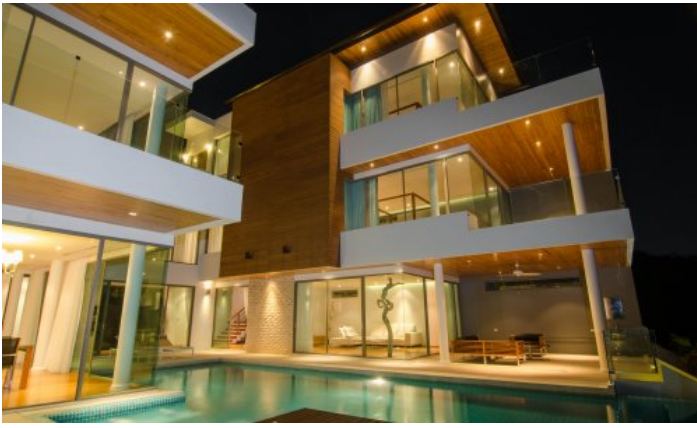
ID4397 STYLISH, LARGE 5-BEDROOM VILLA, WITH SEA VIEW IN GRAND SEE THROUGH VILLAS PROJECT, ON RAWAI BEACH



Price 29 000 000 THB (0 USD) 35 000 000 THB

| | | | |
|----------------------------------|------------|---------------------------------|----------------------------------|
| Deal type | Sale | Land area, m² | 740 |
| Property type | Villa | Pool area, m² | 48 |
| Stage | Completed | View | Sea View, Pool view, Garden view |
| Completion date | 2018 | Floors | 3 |
| To the beach, m | 4000 | Furniture | Furnished |
| Bedrooms | 5 | Listed by | Private person |
| Bathrooms | 6 | Ownership | Foreign Freehold |
| Total area, m² | 560 | Land ownership | Thai Freehold |
| Price per sqm | 51 785 THB | | |





The modern architecture is accentuated with many antique pieces, natural wood furniture and handsome interior design features for the perfect combination of comfort and style ... a truly exceptional holiday experience. The sunrises over the famous islands of Koh Phi Phi in the distance; a truly spectacular vista. The attention to detail is evident at every turn, with all the amenities you would expect with your exclusive holiday villa. Floor to ceiling windows in almost every room gives this ultra-modern villa its distinctive name. Bedrooms offer panoramic views. Five of the six bedrooms feature the villa's distinctive floor-to-ceiling windows, offering maximum views or easily privatized with light-reducing, stylish curtains. Each bedroom features modern en-suite bathrooms. Kitchen A fully-equipped western-style kitchen offers even the discerning chef ample counter space to prepare afternoon snacks or a full-course dinner.

A large breakfast island with many high stools offers both additional preparation space and the perfect gathering spot for breakfast or any time of day. Living Rooms The Grand See Through offers ample indoor and outdoor living space, with pool-side seating and dining area. Two separate living and TV rooms, both with the distinctive floor-to-ceiling windows, provides room for a large group to spread out or couples to find a private spot to enjoy.

Grand See Through is a villa development located in Rawai, Phuket, Thailand. It is 4.3km from the beach with 1 villa units completed in July of 2011. A magnificent six bedroom sea-view villa perched on a secluded Rawai hillside. Floor to ceiling windows in almost every room gives this ultra-modern villa its distinctive name: The Grand See Through.

The modern architecture is accentuated with many antique pieces, natural wood furniture and handsome interior design features for the perfect combination of comfort and style – a truly exceptional holiday experience. Area hillsides and the beautiful Chalong Bay beyond are the features of your panoramic view, with Cape Panwa to the north, a sprinkling of small islands to the south, and the blue waters of the Andaman Sea stretched out beyond. The sunrises over the famous islands of Koh Phi Phi in the distance; a truly spectacular vista.

The attention to detail is evident at every turn, with all the amenities you would expect with your exclusive holiday villa. The villa is set on a quiet hillside, yet is still not far from Rawai and Nai Harn, with all of the benefits of shopping, excellent restaurants and some of Phuket's finest beaches. The Nai Harn road is full of cafes, galleries, night-life entertainment and so much more.