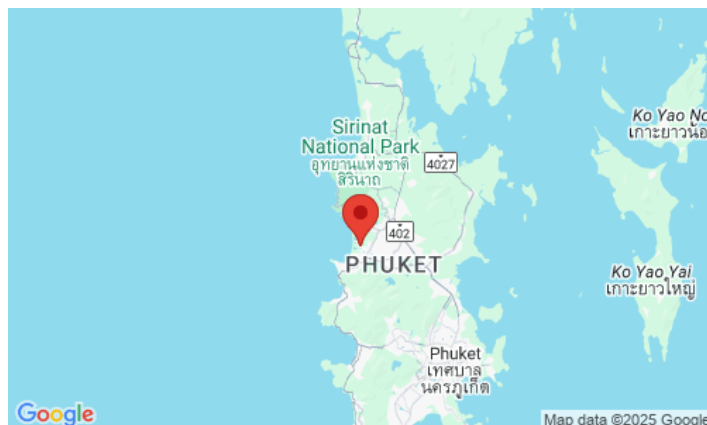
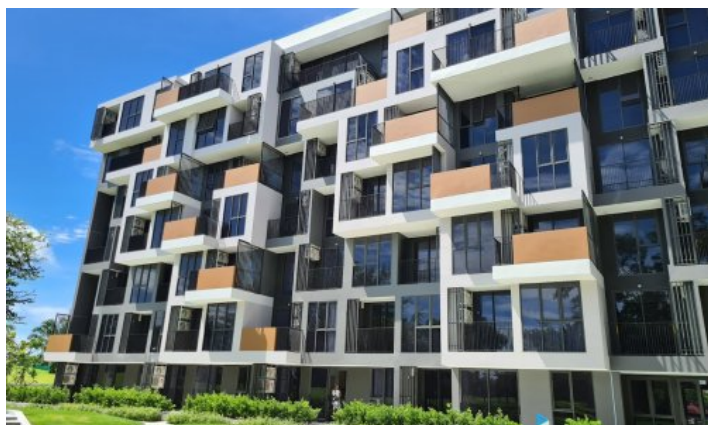
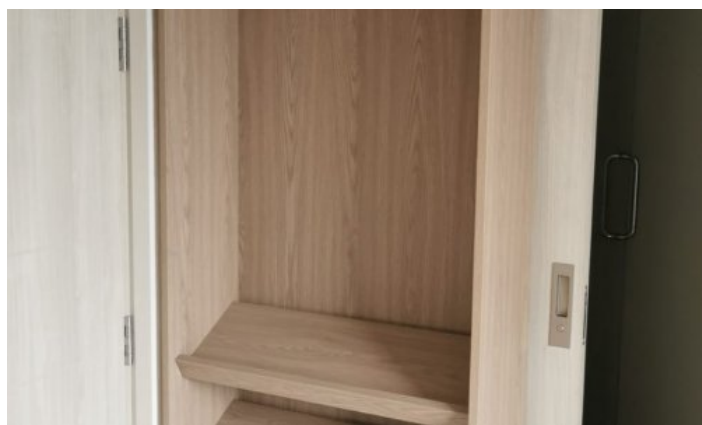


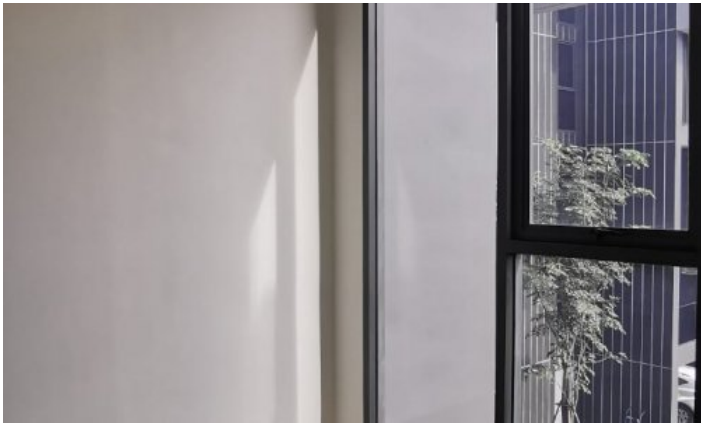
**ID4536 EXCLUSIVE 2-BEDROOM APARTMENTS, WITH LAKE VIEW IN SKY PARK PROJECT, ON BANGTAO/LAGUNA BEACH ( + VIDEO REVIEW)**



**Price 6 100 000 THB (0 USD)**

<b>Deal type</b>	Sale	<b>CAM Fees per month</b>	2 760 THB
<b>Property type</b>	Apartments	<b>View</b>	Lake View
<b>Stage</b>	Completed	<b>Floor</b>	3
<b>Completion date</b>	2021	<b>Floors</b>	7
<b>To the beach, m</b>	600	<b>Furniture</b>	Built-in furniture
<b>Bedrooms</b>	2	<b>Listed by</b>	Private person
<b>Bathrooms</b>	2	<b>Ownership</b>	Leasehold
<b>Total area, m<sup>2</sup></b>	46	<b>Title deed</b>	Chanote
<b>Price per sqm</b>	132 608 THB		





Here is a brand new world-class condominium in 5 \* Laguna Resort from the long-established Banyan Tree Group, which has earned its trust and popularity for a long time. As always, property owners are granted a Sanctuary Club membership. Privileged access to over 40 resorts and 3 golf courses. Owners can join the exchange program, which gives them the opportunity to relax at Banyan Tree hotels around the world. You can relax in Mexico or Vietnam, but there will always be a special attitude towards you.

The project will consist of 3 buildings. Each building has a shop, cafe, reception, concierge and surveillance cameras. You can choose an apartment for yourself: studio 29m<sup>2</sup>, one-bedroom apartments ranging from 30 m<sup>2</sup> to 39 m<sup>2</sup>, two-bedroom apartments ranging from 40m<sup>2</sup> to 60 m<sup>2</sup>. All units have a living room, kitchen, master bedroom, balcony and 1 or 2 bedrooms. The complex will include a communal rooftop pool, gardens and relaxation areas, a yoga lawn, a jogging track and a barbecue area with a spacious terrace. Each building will have a laundry room.

Prices vary depending on the finishing option chosen. You can choose the option with basic finishes, with built-in furniture or with a complete furniture package.

Completion of construction is scheduled for 2021. The developer offers an instalment plan for the construction period and for a period of up to 5 years after the completion of construction.

Special Presale Offer:

- Gift vouchers for spas, restaurants and lodging in Laguna hotels.

SkyPark is a new condominium project from Laguna Phuket, a modern residential complex consisting of three 7-storey buildings will be built on a golf course in the heart of Laguna Phuket Resort. The condominium features studios, 1-bedroom and two-bedroom apartments. Each unit has a living room, dining room and kitchen, as well as balconies to enjoy the breathtaking views of the tropical nature. The V-shaped buildings enhance views of the golf course and the Laguna and provide functional outdoor spaces. Property owners may enjoy the entire infrastructure of the huge Laguna Phuket Resort, receiving privileges in the form of discounts in restaurants, spas and boutiques of the resort.

### **Infrastructure**

Owners can enjoy exclusive access to rooftop recreational facilities. The buildings of the complex are connected by elevated bridges to form a large Sky Park surrounded by greenery, lagoon and ocean views. A rooftop infinity pool with panoramic views and a unique jogging track keep residents and guests healthy. A free shuttle bus runs regularly from the complex to the beach and back. The restaurant offers in-villa or BBQ catering. Each building will have a cozy, modern lobby, public seating and co-working areas, and a spacious laundry room. There will also be a gym and parking on site.

### **What's nearby**

The project is located just 5 minutes walk from Bangtao Beach. This beach is where Phuket's most popular beach clubs are located, such as Xana Beach Club, Dream Beach Club and Catch Club. Nearby is the Laguna Phuket Golf Club, which hosts international class tournaments. Inexperienced golfers can use the services of a personal golf coach. Boat Avenue is a 2-minute drive from the Cassia, with a variety of shops, countless restaurants and bars, and Villa Market, a European supermarket. The modern Porto De Phuket shopping complex, with countless restaurants, Tors supermarket, boutiques and food court, is just a short drive away. Nearby is the Lemonade Kids Club with a children's room and a pool for children, a hot sauna for adults. The bustling party scene of Patong is a 30-minute drive from the complex. The road from the airport to the complex will take about 25 minutes.

### **For whom is it suitable**

Located in one of the most prestigious areas of Phuket with developed infrastructure, but at the same time it will be a fairly inexpensive option for living in comparison with neighbouring hotels. Therefore, the project is popular with many categories of tourists and expats who value quality of life and good location. By renting or purchasing a property in Laguna Phuket, you and your home acquire the style, lifestyle and privileges of a resident of the most prestigious Asian resort.