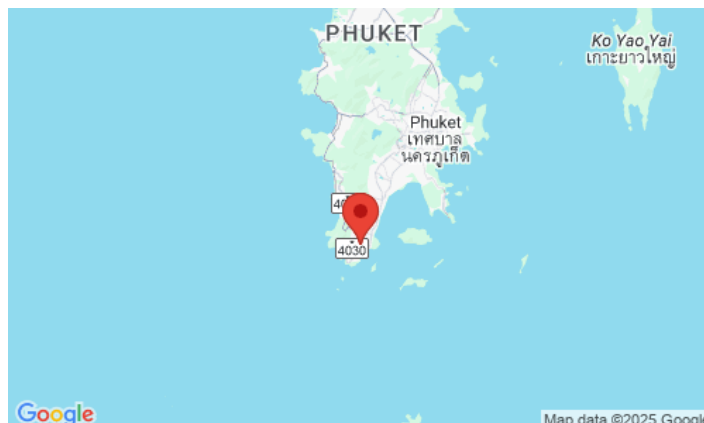
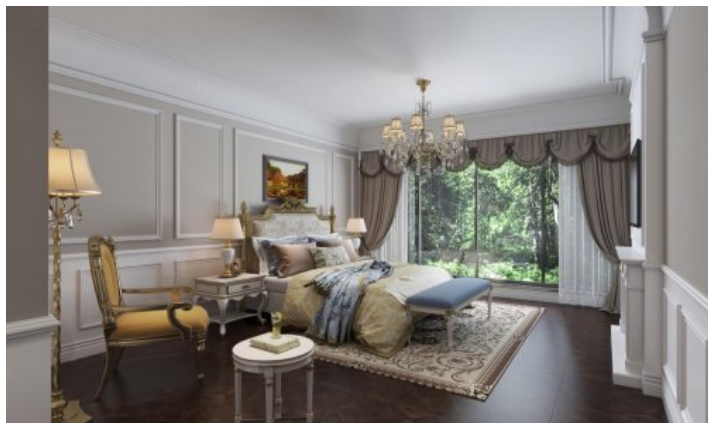


ID4605 STYLISH 1-BEDROOM APARTMENTS, WITH POOL VIEW IN UTOPIA DREAM PROJECT, ON RAWAI BEACH



Price 3 700 000 THB (108 595 USD) ~~4 000 000 THB~~

Deal type	Sale	CAM Fees per sqm	50 THB
Property type	Apartments	View	Pool view, Urban View, Mountain View
Stage	Completed	Floor	2
Completion date	2022	Floors	8
Installment	Available	Furniture	Furnished
To the beach, m	1500	Listed by	Developer
Bedrooms	1	Ownership	Leasehold
Bathrooms	1	Title deed	Chanote
Total area, m²	32	Guaranteed income	6%
Price per sqm	115 625 THB		





UTN 2期 总体规划图
MASTER PLAN

Utopia Dream is a new 9th project from a proven Developer in Phuket. The project includes villas and a condominium, which will consist of 3 separate buildings with individually decorated apartments. You can choose from 9 styles of unique apartment design that suits you.

The villas are also designed to combine traditional and modern aesthetics and amenities. This project will be the first real estate project in Phuket to integrate Chinese elements into a luxury villa. Combining Chinese facades with traditional Thai designs, simplicity of interior design and comfortable open-plan living, Utopia turns a popular dream into reality.

Free Holidays: 30 free nights per year at any Utopia hotel. Take advantage of any of the amenities at any Utopia hotel - spend your holidays at Utopia Karon using the gym in Nai Harn or the pool in Kata.

Infrastructure

The project will include a gym, spa, Japanese restaurant, a large pool in the garden, a 24-hour recreation and entertainment center with a high-class design in Japanese style. This center will include a Japanese garden bathing area, relaxing spa areas, a karaoke room, a cinema room, a seafood buffet restaurant, Japanese-style lounges and more to cater to the needs of all customers, 24-hour service, 7 days in Week. It will provide a facility that caters to all tourists, locals and residents alike to have a simple option from a variety of services and amenities at any time of the day or night in the southern part of Phuket. Free shuttle to the beach as well as transfers between all Utopia projects in Phuket.

What's nearby

One of the best beaches - Nai Harn is located 700 meters from the project. The beach is popular with families with children and expats, so you will not find a large crowd of tourists here. A stone's throw from the beach, there is a freshwater lake and an observation deck with windmills. Nai Harn Beach is popular with families with children, as well as the long-term guests of the island. It is comfortable to spend your vacation here, because Nearby there are many restaurants with international cuisine and national Thai cuisine. There are also places where you may hire a car rental and tour services. For a long stay on Nai Harn, it is comfortable to live for families with children - there are international and Thai kindergartens, international and Russian schools nearby. The way from Nai Harn to the popular children's play complex "Rawai Park" will take 5 minutes by car or bike.

Nai Harn is also often chosen for yoga tours or sports events. At Nai Harn and in the neighbouring Rawai district, there are many gyms, and specialised for Thai boxing camps. In 7-10 minutes drive there is a hyper market Makro, a supermarket with European products Villa Market, a fish market.

For whom is it suitable

The apartments are well suited for investment and vacation. Most often, young couples and groups of friends choose a condominium.