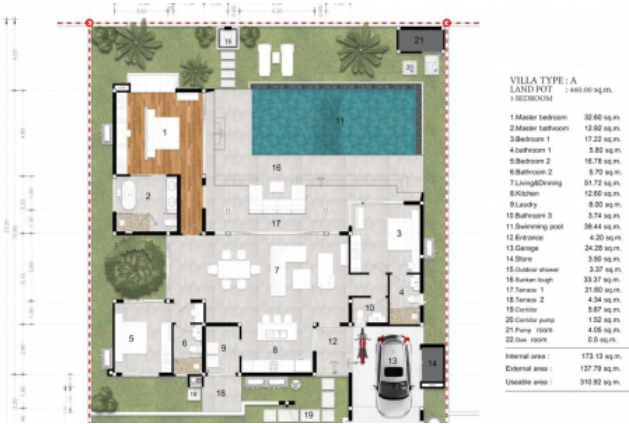


ID4621 STUNNING 4-BEDROOM VILLA, WITH POOL VIEW, ON BANGTAO/LAGUNA BEACH



Price 29 670 000 THB (0 USD)

Deal type	Sale	Land area, m²	510
Property type	Villa	View	Pool view, Garden view
Stage	Under construction	Floors	2
Completion date	2022	Parking spots	2
To the beach, m	5200	Furniture	Built-in furniture
Bedrooms	4	Listed by	Developer
Bathrooms	5	Ownership	Foreign Freehold, Thai Freehold, Leasehold, Company
Total area, m²	370	Land ownership	Thai Freehold, Leasehold, Company
Price per sqm	80 189 THB	Title deed	Chanote
Indoor area, m²	269		



On the territory of the complex there are 8 luxurious three-room villas of three types. All houses are located on large plots from 690 to 1035 sqm, and the area of villas from 393 to 564 sqm. On the site there is a spacious swimming pool and a sala gazebo. Only high quality materials are used in the construction of the villas: teak floors in the living room, ceramic tiles in the bedrooms, tobacco wood ceilings, natural stone façades and a pool lined with Indonesian stone.

What's nearby

Botanica Modern Loft is a 10-minute drive from Bangtao Beach. This beach is where Phuket's most popular beach clubs are located, such as Xana Beach Club, Dream Beach Club and Catch Club. Not far from the Botanica Modern Loft Complex is the Blue Tree - this is a large entertainment complex, which includes: the actual lagoon of the water park with various attractions on water and land, several large parking lots, a helipad, a kids club, a fitness area, a shopping center, restaurants and mobile food tents. Blue tree Phuket Water Park opened its doors in the fall of 2019 in the north of the island, not far from Bangtao Beach. And he is already one of the top attractions in Phuket. The park is suitable for visitors of all ages, especially children. An active day for the whole family is guaranteed! A 10-minute drive from the Botanica Modern Loft is the Boat Avenue shopping complex with a variety of shops, countless restaurants and bars, and a European supermarket Villa Market. The modern Porto De Phuket shopping complex, with countless restaurants, Tors supermarket, boutiques and food court, is just a short drive away. Nearby is the Lemonade Kids Club with a children's room and a pool for children, a hot sauna for adults. The bustling party scene of Patong is a 30-minute drive from the complex. The road from the airport to the complex will take about 25 minutes.

For whom is it suitable

The complex will satisfy the requirements of the most discerning tourists who prefer luxury villas in close proximity to Bangtao Beach.