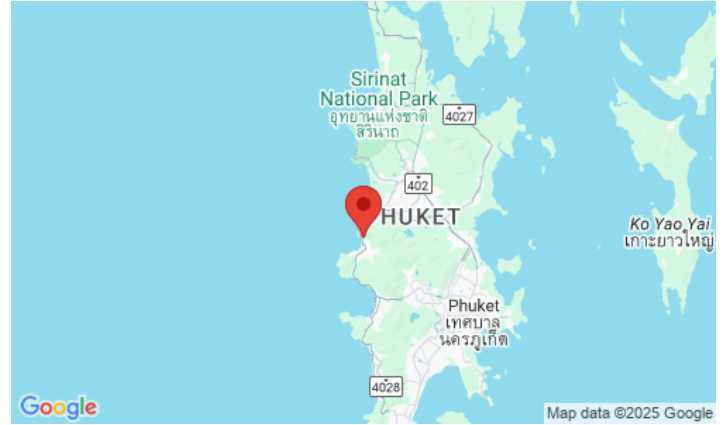


**ID4863 COMFORTABLE 1-BEDROOM APARTMENTS, WITH SEA VIEW AND NEAR THE SEA IN MONTAZURE LAKESIDE PROJECT, ON KAMALA BEACH BEACH**

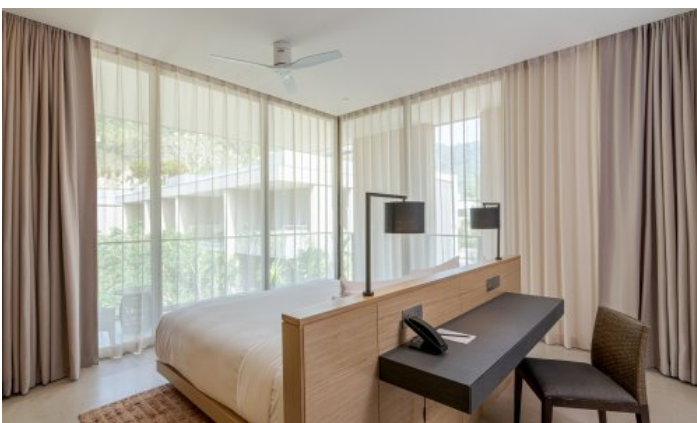
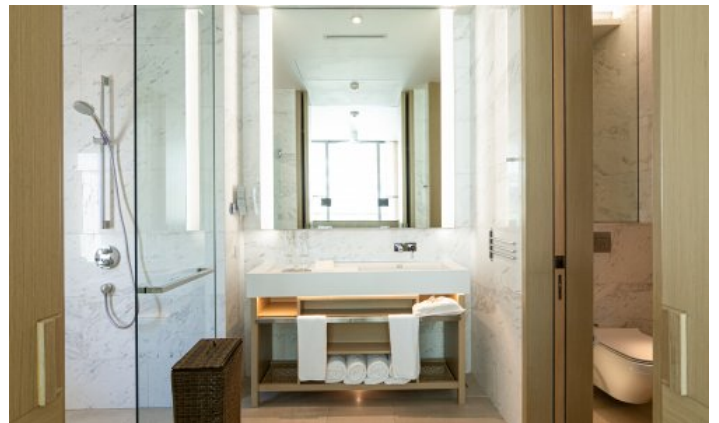


**Price 33 989 000 THB (997 577 USD)**

<b>Deal type</b>	Sale	<b>CAM Fees per sqm</b>	80 THB
<b>Property type</b>	Apartments	<b>Indoor area, m<sup>2</sup></b>	87
<b>Stage</b>	Completed	<b>View</b>	Sea View, Pool view, Garden view
<b>Completion date</b>	2023	<b>Floor</b>	3
<b>To the beach, m</b>	100	<b>Floors</b>	5
<b>Bedrooms</b>	1	<b>Listed by</b>	Private person
<b>Bathrooms</b>	1	<b>Ownership</b>	Leasehold
<b>Total area, m<sup>2</sup></b>	226	<b>Guaranteed income</b>	7%
<b>Price per sqm</b>	150 393 THB		







MontAzure Lakeside is a wonderful condominium-style resort. This luxury residential and resort complex is ideally located at the foot of a wooded hill cascading down to a white beach. The selected location provides the most convenient access to all the exclusive advantages of MontAzure, just a few steps from Kamala Beach. The project includes spacious studio apartments of 47-54m<sup>2</sup> and 1-bedroom apartments of 56-70m<sup>2</sup>. The project is managed by a 5 \* hotel, including luxury hotels, resorts, beach clubs and numerous retail outlets. The project also provides a rental program that will automatically manage your property.

### **Infrastructure**

The complex will have a communal pool, children's pool, playground, lobby, yoga room, fitness room, spa, walking and jogging paths, a panoramic pool bar and 24-hour restaurant, shuttle service and parking. The project will be under 24-hour security and video surveillance.

### **What's nearby**

The MontAzure mega-project is located along Kamala Beach, in the heart of Phuket's prestigious west coast. It is the ideal location for the buyer looking to maximize the potential of the island's exquisite resort life. The project is located in the Kamala Beach area, which is considered one of the most beautiful places in Phuket. Kamala resort town - there are many shops, cafés, restaurants, beach clubs such as the world-famous Cafe Del Mar, PINE Beach Club at the Intercontinental Hotel, HQ Beach Club. And also the Shimmer restaurant with European cuisine on the beach. Very close (1.4 km) is the Phuket FantaSea theme park and, of course, Patong Beach, famous for its entertainment all over the world.

### **For whom is it suitable**

One of the options that will surely satisfy your needs if you are considering buying property for investment and holiday.