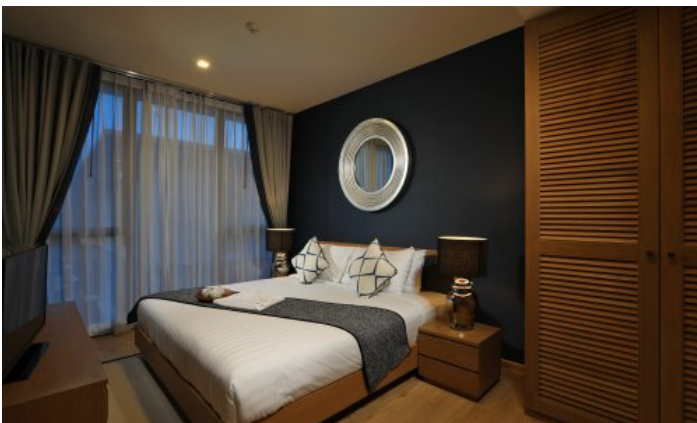


ID4981 COZY 1-BEDROOM APARTMENTS, WITH GARDEN VIEW AND NEAR THE SEA IN BAAN MAI KHAO PROJECT, ON MAI KHAO BEACH



Deal type	Rent	Bathrooms	1
Property type	Apartments	Total area, m²	63
Stage	Completed	View	Garden view
Completion date	2015	Floors	5
To the beach, m	50	Furniture	Furnished
Bedrooms	1	Listed by	Private person
Guests	2		

Periods	Day, THB	3 Days, THB	Week, THB	2 Weeks, THB	Month, THB
01.12 - 31.01	4 250	12 750	27 625	48 875	85 000
01.10 - 30.04	3 000	9 000	19 500	34 500	60 000
01.05 - 30.09	2 250	6 750	14 625	25 875	45 000





Project Description

The complex is located right on the shore of the beautiful deserted Beach natai surrounded by five-star hotels. The project includes six three-storey buildings and three five-storey buildings - a total of 206 apartments ranging from 59 to 264 sq.m. The complex has 1 bedroom apartments with an area of 68 m2 and 2 bedrooms, ranging from 90 m2. Each apartment is equipped with a TV with satellite channels, an equipped kitchen with a microwave and a refrigerator, a washing machine and a bathroom with a shower.

Infrastructure

On-site parking for 100 cars, an excellent garden, swimming pool, fitness room, internet and 24-hour video surveillance. Condominium offers a professional concierge service for owners. From the very first moment you arrive in Phuket, you will have access to services such as airport pick-up (15 minutes from the airport), babysitting and food delivery directly to your door. It offers apartments with free Wi-Fi, air conditioning and a garden. This beachfront complex has access to a terrace. Active guests can go cycling in the surrounding area or rent a car.

What's nearby

Baan Mai Khao Beach Residence is located on Mai Khao Beach, 300 metres from Mai Khao Beach and 11 km from Splash Jungle Water Park. The complex is located right on the shore surrounded by five-star hotels and is estimated at 28 billion baht. Famous hotels in the vicinity include JW Marriott Phuket Resort and Spa, Anantara Phuket Resort and Spa, Sala Phuket and Renaissance Phuket Resort and Spa.

For whom it is suitable

The complex is ideal for couples with children. If you want to take a break from the hustle and bustle of the bustling city and enjoy nature and the sea - this will be a good choice!