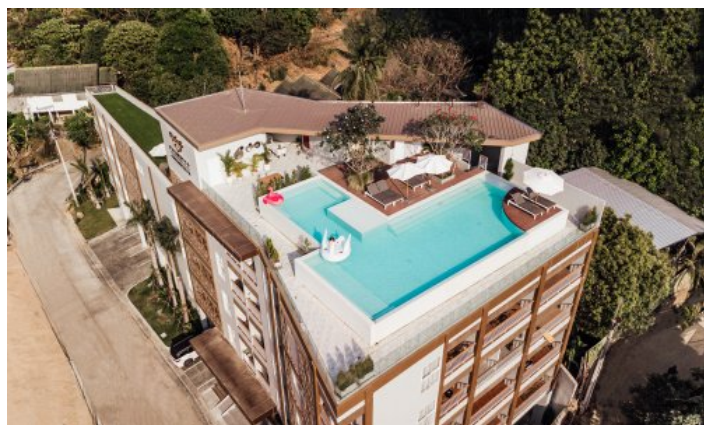
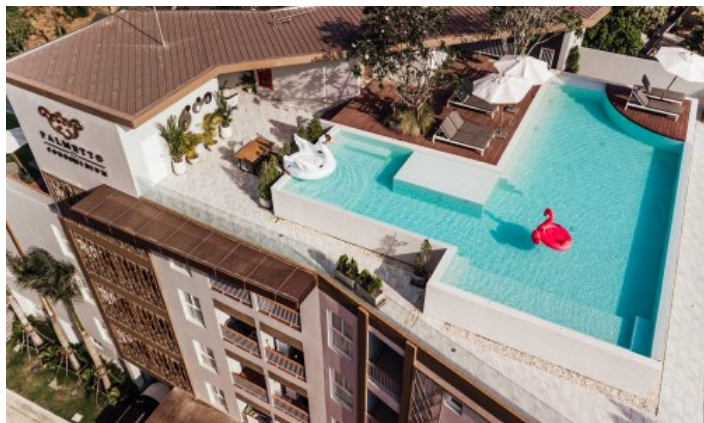
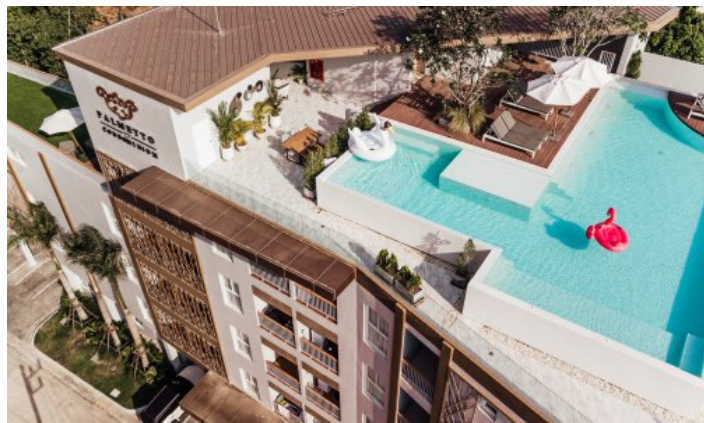


# ID5006 COMFORTABLE 2-BEDROOM APARTMENTS, WITH GARDEN VIEW IN PALMETTO PROJECT, ON KARON BEACH

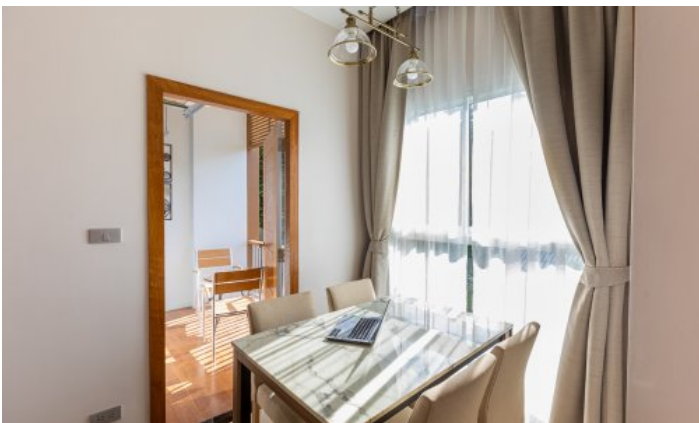
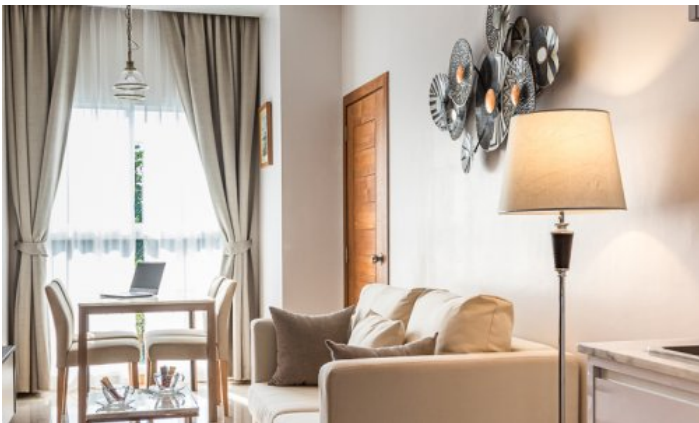


<b>Deal type</b>	Rent	<b>Total area, m<sup>2</sup></b>	68
<b>Property type</b>	Apartments	<b>View</b>	Garden view
<b>Stage</b>	Completed	<b>Floor</b>	2
<b>Completion date</b>	2020	<b>Floors</b>	6
<b>To the beach, m</b>	300	<b>Furniture</b>	Furnished
<b>Bedrooms</b>	2	<b>Listed by</b>	Private person
<b>Bathrooms</b>	2		

Periods	Day, THB	3 Days, THB	Week, THB	2 Weeks, THB	Month, THB
01.12 - 31.03	3 381	10 143	21 977	38 882	67 620







Palmetto Condominium, a luxury condominium in boutique-style, located in a prime area of Karon and surrounded by lush mountain views. It is just a few minutes to Karon and Kata Beaches. At the same time, you can enjoy traditional coastal lifestyles and be more convenient with various amenities such as markets, plazas, shops, and restaurants. Palmetto Condo delivers luxurious relaxation as if you were in a five-star vacation resort. It features modern full facilities, including an elegantly decorated lobby with a full-time receptionist, the courtyard-style swimming pool, a well-equipped fitness center, valet parking, concierge service, and a 24-hour security system.

#### Project Information

Palmetto Condo is located at 8 Patak soi 14, Karon Sub-District, Muang Phuket, Phuket. The project is a 6-story low-rise condominium with 30 residential units. The project was developed by Palmetto Real Estate and was completed in 2020