

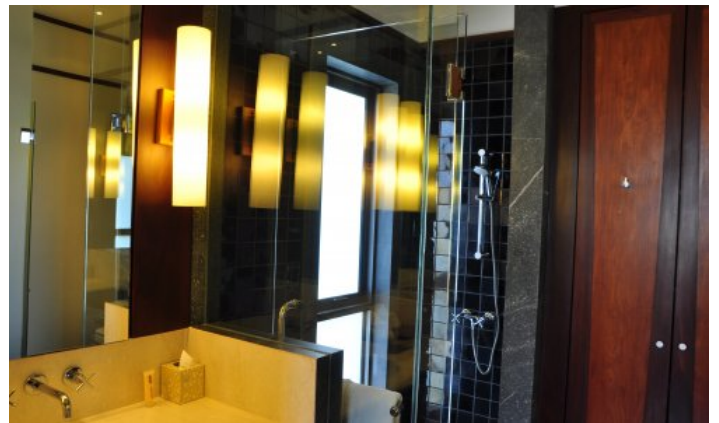
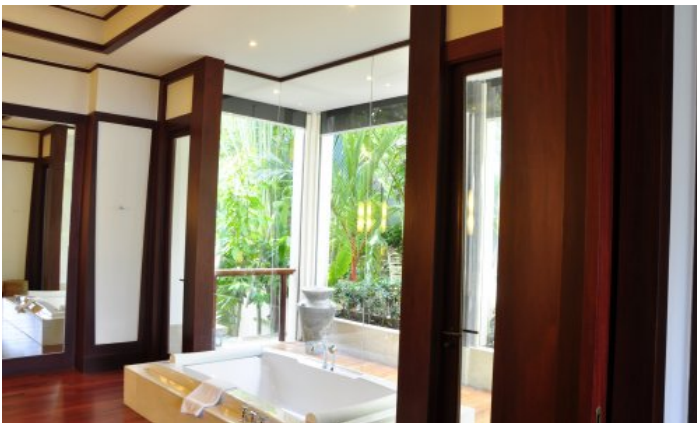
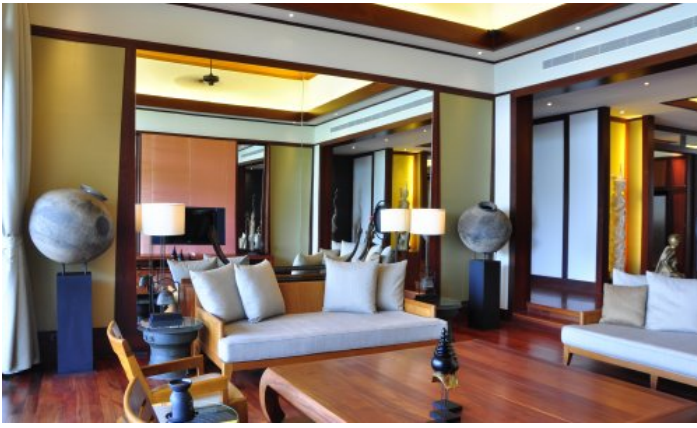
ID5083 FASHIONABLE, LARGE 4-BEDROOM HOTEL, WITH SEA VIEW IN ANDARA RESIDENCE PROJECT, ON KAMALA BEACH BEACH



Price 151 000 000 THB (4 431 850 USD)

Deal type	Sale	Indoor area, m²	431
Property type	Hotel	View	Sea View, Pool view
Stage	Completed	Floor	1
Completion date	2008	Floors	3
To the beach, m	2300	Furniture	Furnished
Bedrooms	4	Listed by	Private person
Bathrooms	4	Ownership	Leasehold
Total area, m²	832	Land ownership	Leasehold
Price per sqm	181 490 THB		





Andara Resort is located on Kamala Beach, a 3 km stretch of beach on the west coast of Phuket. The beach is adjacent to the Andaman Sea, calm, relatively quiet time, but at the same time within easy reach of the small friendly village of Kamala.

AREA GUIDE / LOCAL KNOWLEDGE

There is a pristine beach at your doorstep, so there is no need to explore further. Kamala Beach is stunningly beautiful with crystal clear waters, white sand and gentle waves. The Millionaire Row where Andara Resort Villas can be found is an exclusive community of luxury hotels that attracts many wealthy expatriates from around the world. The entire area is dotted with private villas and hotels, resorts and signature beach clubs that are increasingly difficult to find around the world today. The area is quiet enough, but within easy reach of the friendly village of Kamala, within walking distance of the resort where you can find a wide variety of shops, restaurants, including a supermarket with everyday products. Phuket Island offers World Class, Medical Facilities, Golf Courses, Marina and Diving Centers as well as large shopping malls offering branded products.

VILLA / ACCOMMODATION

Space, light, comfort and luxury are only four words we hear on a regular basis when people describe this villa, all of which are very apt. The villa has one master bedrooms and a further three guest bedrooms, all with luxurious en-suites and jaw-dropping sea views. The main living, dining and entertainment areas are well positioned with easy access to the large sun terrace and infinity swimming pool. From here, owner and guests alike can enjoy the expansive ocean and mountain views. All roof-lines have been extended to give additional shade from the sun and shelter from the rain ceiling the summer months.

The pool, sun terrace and enlarged dining sala, all of which have to be experienced (along with the incredible views) to be believed.

The internal areas, like all the bedrooms, enjoy the natural feel of rich hardwood flooring, architraves and matching doors, silk lined wall inserts and high vaulted ceilings. Bathrooms and en-suites are large and luxurious with soft lighting and a superb use of mirrors to enhance the special ocean views. The large western style build-in in kitchen with a cooking range, oven, double door fridge and dishwasher a delight to use.

DESIGN

The building, completed in 2010, has been meticulously designed and built to perfection. Its design combines five-star resort life with Thai / Balinese and contemporary architecture, with attention to detail in both home layout and building materials. The spacious open-plan villa is made up of two-story pavilions, each of which is connected by covered walkways to connect both indoor and outdoor living spaces. The interior of the house combines elements of South East Asia and modern design, an abundance of Minotti furniture and the most modern audiovisual systems, including the Sonos audio system.

FACILITIES

Western 5-star hotels, spa with eight separate rooms, 300-area gym. .m offers a wide range of professional equipment and a 400 sqm spa pool. Each of the properties has an experienced management team that will support and meet all your needs !!

PROFESSIONAL MANAGEMENT

Upon completion in 2010, the villa is professionally managed by Andara Resorts staff and a local general manager.

The new owner will be able to use the same resort management team / company, select an alternative provider and / or manage the property.

LEGAL PROPERTY

Properties in the offer on a VERY LEVEL with a secured land lease structure that ensures the security of foreign ownership.

Andara Resort and Villas in Kamala, Phuket is a mixed-use project located in Kamala, Phuket and was completed in Dec 2008. It has 37 units across 3 floors and was developed by Lan Kwai Fong

About Andara Resort and Villas

Experience the aesthetics of living with Andara, a property project on a green hill with a splendid view of Kamala Beach. Feel the touch of nature, an excellent design from a world-famous architect, and 5-star service here at Andara, a superior living experience that is beyond an impression.

Project information

With 37 residential units, the project is a project development from Andara Resort and Villas Company and completed in 2008. The starting price is 47 million baht.

Residence Types

Apartment: 2 bedrooms, 3 bathrooms, a balcony, a private pool, facing the west for Andaman sea view, stylish decoration with silk from Jim Thompson Farm and teak furniture (244.85 sq.m)

Apartment: 3 bedrooms, 4 bathrooms, an open-space living area, indoor and outdoor dining area, sunbeds, stylish decoration with silk from Jim Thompson Farm, teak furniture, and granite material (242 sq.m)

Family Apartment: 4 bedrooms, 5 bathrooms, functional room layout, deluxe decoration with teak furniture (743 sq.m)

Suite: 3 bedrooms, 3 bathrooms, a balcony, a private pool, facing the east for high privacy, stylish decoration in Thai traditional and contemporary design with silk from Jim Thompson Farm and tropical furniture (311 sq.m)

Terrace Residence: 3 bedrooms, 4 bathrooms, a balcony, a private pool, facing the west for Andaman sea view, stylish decoration with silk from Jim Thompson Farm and teak furniture (240 sq.m)

Penthouse: 3 bedrooms, 4 bathrooms, the exclusive location for Andaman sea view, a private pool, high ceiling, traditional Thai and Asian decoration, an outdoor dining area with Kamala Bay view (402 sq.m)

Penthouse: 4 bedrooms, 5 bathrooms, a balcony, high ceiling, a private pool, wooden floors and poles, stylish decoration with teak furniture and bronze lion statue, a symbol of wealth (832 - 845 sq.m)

Facilities

- Fitness center
- Parking space
- 24-hour security system and CCTV
- On-site luxurious restaurants such as SILK Restaurant & Bar and La Seta
- Garden
- Lobby
- Tennis court
- Stream and sauna
- Complete Spa
- Infinity-edge swimming pool
- Jacuzzi