

**ID5134 EXCLUSIVE 2-BEDROOM APARTMENTS, WITH POOL VIEW IN SATURDAYS PROJECT, ON RAWAI BEACH**

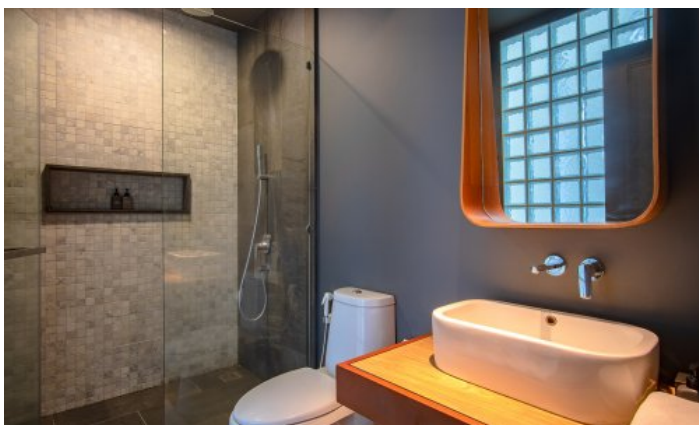
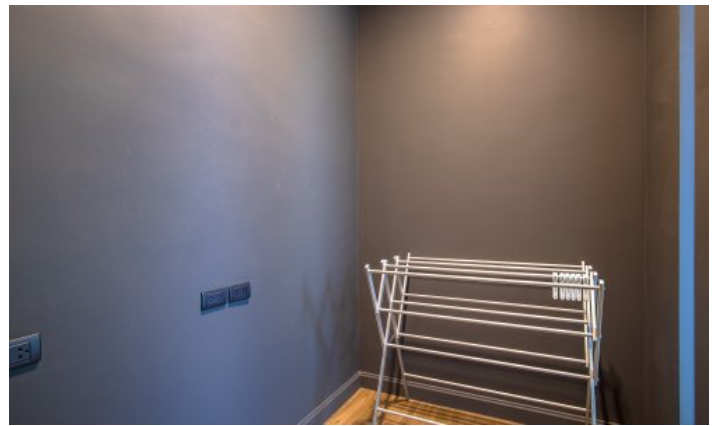
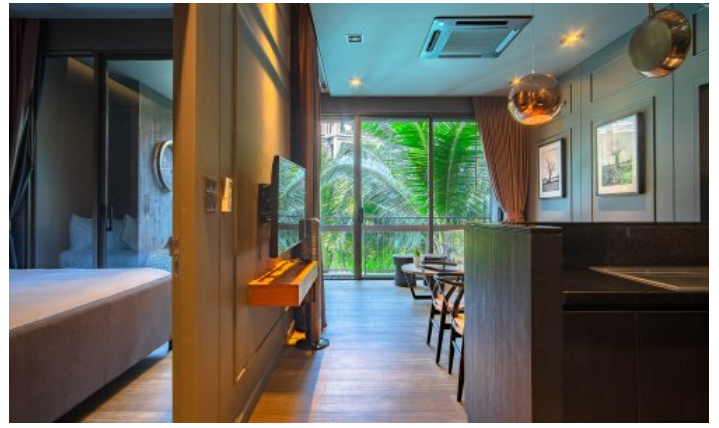


**Price 10 500 000 THB (0 USD)**

<b>Deal type</b>	Sale	<b>Price per sqm</b>	126 506 THB
<b>Property type</b>	Apartments	<b>CAM Fees per month</b>	5 000 THB
<b>Stage</b>	Completed	<b>View</b>	Pool view
<b>Completion date</b>	2016	<b>Floor</b>	2
<b>To the beach, m</b>	4900	<b>Floors</b>	4
<b>Bedrooms</b>	2	<b>Furniture</b>	Furnished
<b>Bathrooms</b>	2	<b>Listed by</b>	Private person
<b>Total area, m<sup>2</sup></b>	83	<b>Ownership</b>	Foreign Freehold, Thai Freehold







The condominium is located at the southernmost point of Phuket Island. Not far from the popular Rawai promenade and in the very center of the developed tourist infrastructure of the southern part of the island. A special project with incredible charm and classic architecture. The condominium is painted black and looks elegant. Apartments in condo spacious apartments - 1 bedroom 57m2 and double 80-86m2 apartments with communication, living room with TV, fully equipped kitchen. On the territory there is a communal pool, gym, restaurant, reception and 24-hour security and parking.

### **What's nearby**

One of the best beaches - Nai Harn is located 4 kilometers from the project. The beach is popular with families with children and expats. A stone's throw from the beach, there is a freshwater lake and an observation deck with windmills. Nai Harn Beach is popular with families with children, as well as for those guests who come to escape from the winter and long-term guests of the island. It is comfortable to spend your vacation here, because Nearby there are many restaurants like European. and national Thai cuisine. There are also offices with transport rental and excursion services. For a long stay on Nai Harn, it is comfortable to live with a family with children - there are internal and Thai kindergartens, international and Russian schools nearby. The way from Nai Harn to the popular children's play complex "Rawai Park" will take 5 minutes by car or bike.

Nai Harn is also often chosen for yoga tours or sports campings. gyms, specialised Muay Thai camps for and street workout spots are concentrated on Nai Harn and in the neighbouring district of Rawai. In 7-10 minutes drive there is a hyper market Makro, a supermarket with European products Villa Market, a fish market.

### **For whom is it suitable**

The apartments in the offer are available for both short vacations and long-term rentals. Most often this complex is chosen by expats and winter escaping guests, especially young couples.