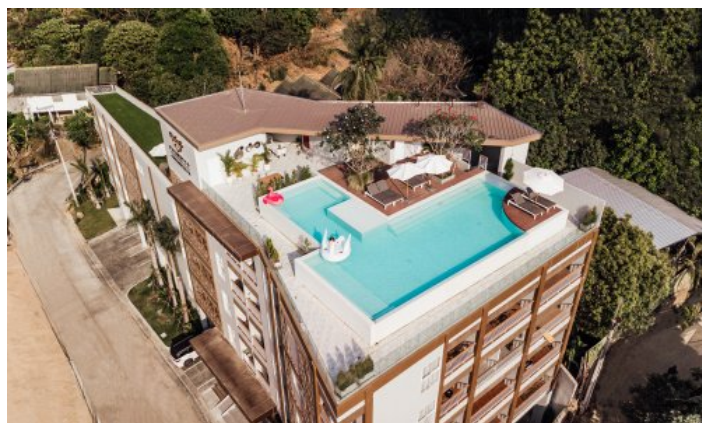
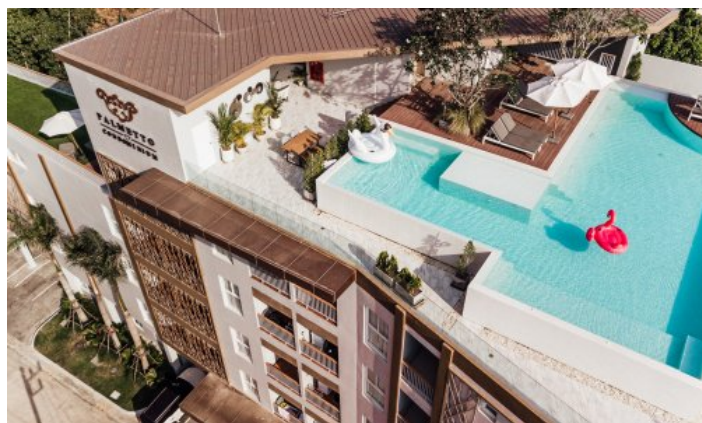


## ID5230 AMAZING 1-BEDROOM APARTMENTS, WITH MOUNTAIN VIEW IN PALMETTO PROJECT, ON KARON BEACH



**Price 5 750 000 THB (0 USD)**

<b>Deal type</b>	Sale	<b>Price per sqm</b>	136 904 THB
<b>Property type</b>	Apartments	<b>CAM Fees per sqm</b>	60 THB
<b>Stage</b>	Completed	<b>View</b>	Mountain View
<b>Completion date</b>	2020	<b>Floor</b>	2
<b>To the beach, m</b>	300	<b>Floors</b>	6
<b>Bedrooms</b>	1	<b>Furniture</b>	Furnished
<b>Bathrooms</b>	1	<b>Listed by</b>	Developer
<b>Total area, m<sup>2</sup></b>	42		







Palmetto Condominium, a luxury condominium in boutique-style, located in a prime area of Karon and surrounded by lush mountain views. It is just a few minutes to Karon and Kata Beaches. At the same time, you can enjoy traditional coastal lifestyles and be more convenient with various amenities such as markets, plazas, shops, and restaurants. Palmetto Condo delivers luxurious relaxation as if you were in a five-star vacation resort. It features modern full facilities, including an elegantly decorated lobby with a full-time receptionist, the courtyard-style swimming pool, a well-equipped fitness center, valet parking, concierge service, and a 24-hour security system.

#### Project Information

Palmetto Condo is located at 8 Patak soi 14, Karon Sub-District, Muang Phuket, Phuket. The project is a 6-story low-rise condominium with 30 residential units. The project was developed by Palmetto Real Estate and was completed in 2020