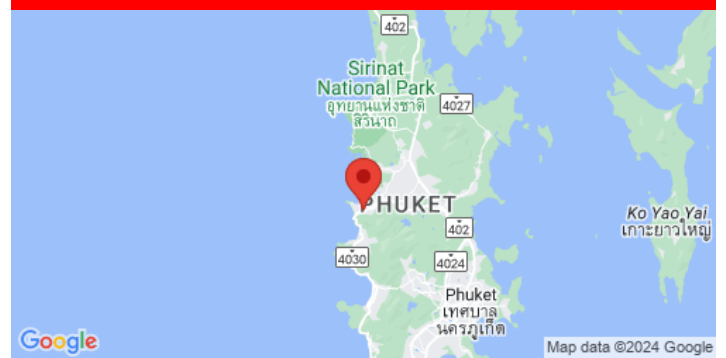


## ID5432 CHIC 2-BEDROOM APARTMENTS, WITH MOUNTAIN VIEW, ON SURIN BEACH BEACH

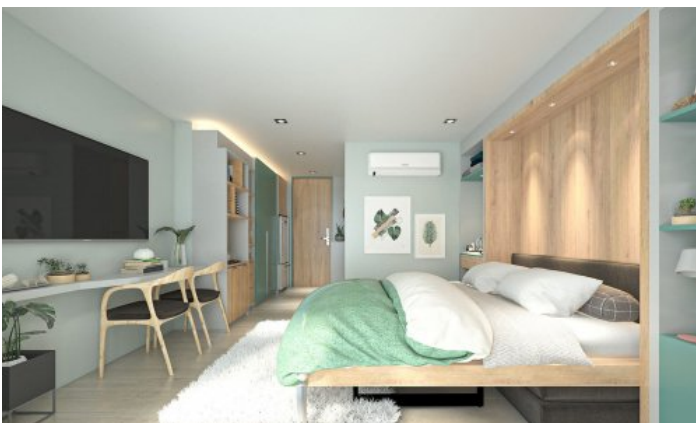


Guaranteed income 5% for 5 years



**Price 8 075 979 THB (0 USD)**

|                 |                    |                   |               |
|-----------------|--------------------|-------------------|---------------|
| Deal type       | Sale               | CAM Fees per sqm  | 60 THB        |
| Property type   | Apartments         | View              | Mountain View |
| Stage           | Under construction | Floor             | 4             |
| Completion date | 2022               | Floors            | 8             |
| To the beach, m | 1600               | Furniture         | Unfurnished   |
| Bedrooms        | 2                  | Listed by         | Developer     |
| Bathrooms       | 2                  | Ownership         | Leasehold     |
| Total area, m²  | 60                 | Title deed        | Chanote       |
| Price per sqm   | 134 599 THB        | Guaranteed income | 5%            |







The new condominium under construction will be located on a hill with stunning sea and mountain views. The concept of the project is environmental friendliness. The project focuses on every process of awareness a global warming ideology, such as eliminating non-recyclable plastics using new cutting-edge technologies and innovations to clean the environment and use renewable energy. A distinctive feature of Serene Condominium Phuket is the re-planting of trees instead of cutting them. Another highlight is that for every 1 million baht from buyers, the condominium will donate 1,000 baht to Thai Environment (TU), on behalf of the residents. There are 6 types of apartments in the condominium. All studio apartments are equipped with convertible furniture, and the apartments on the ground floors have direct access to the pool. There are also 2 types of one-bedroom apartments, and two bedrooms are intended for families and just one exclusive 3-bedroom penthouse adds premium to the project.

### **Infrastructure**

There will be 3 swimming pools on the territory of the project, one of which is on the roof. There will also be a recreation area with a restaurant and a bar, from where a sea view will open, and a gym, spa and sauna will be located on the floor below. The condominium will have surface and underground parking. On the ground floor there is a reception and a cafe. You can take a free shuttle to the beach. 24-hour security and video surveillance.

### **What's nearby**

Serene Condominium is located between two of Phuket's most popular beaches, Surin and Bang Tao. This is one of the most attractive places in Phuket. A couple of minutes drive from these beaches is a guarantee that the project will be popular among tourists. Ideal location, 10 minutes walk from Surin and Bangtao beaches, close to numerous restaurants, shops and cafes of Surin and Bang Tao. Surin Beach, which is approximately 1000 meters long, is very popular with tourists today. The beach is located on the territory of the bay among the picturesque and very unusual for tropical places of pine trees, in the shade of which you can hide from the midday heat. The beach is great for active tourists - you can surf in the summer season, and in the high season (November - April) snorkeling is good in the northern part of the beach. All the equipment you need can be rented or bought from a shop behind the main road. Near the complex are Siam Blue & Catch beach club, Tesco lotus express.

### **For whom is it suitable**

Ideal for young couples and young families who want convenient access to the exciting nightlife and entertainment that Phuket has to offer, while still being able to return to a peaceful environment with high quality service.