

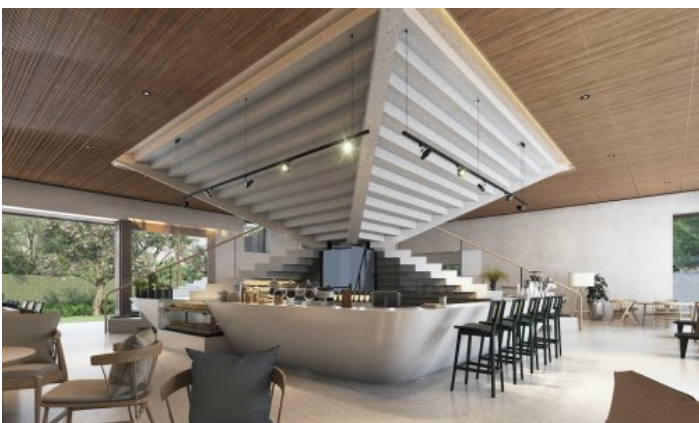
**ID5459 EXCLUSIVE 3-BEDROOM VILLA, WITH URBAN VIEW, ON BANGTAO/LAGUNA BEACH**



**Price 24 800 000 THB (0 USD)**

<b>Deal type</b>	Sale	<b>CAM Fees per month</b>	10 000 THB
<b>Property type</b>	Villa	<b>Land area, m<sup>2</sup></b>	205
<b>Stage</b>	Under construction	<b>View</b>	Urban View, Garden view
<b>Installment</b>	Available	<b>Floors</b>	2
<b>To the beach, m</b>	6000	<b>Furniture</b>	Built-in furniture
<b>Bedrooms</b>	3	<b>Listed by</b>	Developer
<b>Bathrooms</b>	3	<b>Ownership</b>	Foreign Freehold
<b>Total area, m<sup>2</sup></b>	370	<b>Land ownership</b>	Leasehold
<b>Price per sqm</b>	67 027 THB	<b>Guaranteed income</b>	5%





Qabalah is rooted from ancient Hebrew's word "Qibel", pronounced as "Kab-ba-la." From religious point of view, it is the interpretation/explanation of bible and its teaching by word of mouth before anything was written. It is also a spiritual teaching of life mystery, its origin and meaning of living life and how you can imply and improve that on your experience on earth. It clarifies the relationship between human and nature. Although the interpretation of Qabalah is varied for each culture, the main core is still centring on peacefulness among the livings.

Original concept is to build a green community, a place where we live and work in sustainable lifestyle and in a green way. Through several activities, we will build strong bond between people and nature. Through mutual support, the interaction between local communities, the residents and the company will accomplish the same goal. The land allocation is predominantly dedicated to the green public spaces and amenities rather than on commercial purposes. Nevertheless, we focus on building wholesome and sustainable life for residents, neighbours and locals.

There are **3 villa types** with distinctive spaces and styles: Moss, Fern and Pine all tropical plants resemble abundance, fruitfulness and longevity that reflect the Qabalah ideology of living in peace with nature.

#### **Villa types**

1. MOSS 237.8 SQ.M. Pool size : 3.5×9 M.

- 2 Bedrooms 2 Bathroom
- Living & Dining
- Mineral Pool
- Rooftop Garden

2. FERN 369 SQ.M. Pool size : 3.5×9 M.

- 3 Bedrooms 3 Bathrooms
- Living & Dining
- Mineral Pool
- Rooftop Garden

3. PINE 573.8 SQ.M Pool size : 3.5×8 M.

- 4 Bedrooms
- 5 Bathrooms
- Living & Dining
- Mineral Pool
- Rooftop Garden

#### **Facilities**

- 24 hrs-CCTV
- (security cameras)
- Health Center
- Yoga & Sauna
- Cafe & restaurant
- Smart door-lock
- Juristic Management
- Pet-friendly outdoor area
- Tree O'clock cafe & kitchen
- Multifunction room
- Rooftop farm & garden

**Promotion for early bird: prices start at THB 12.9 million**