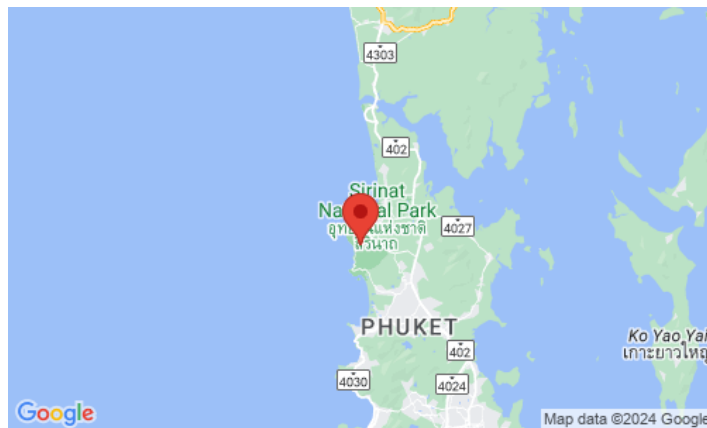
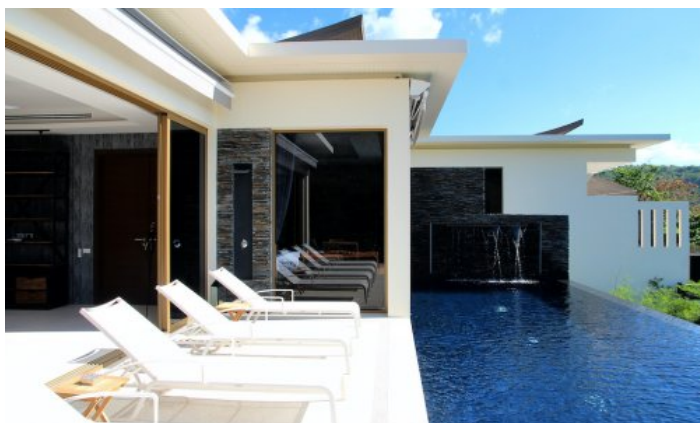


## ID5483 LUXURIOUS 3-BEDROOM VILLA, WITH SEA VIEW, ON NAITHON BEACH

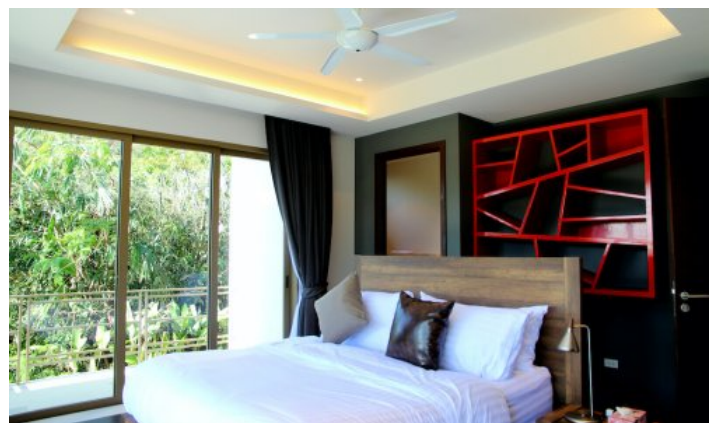
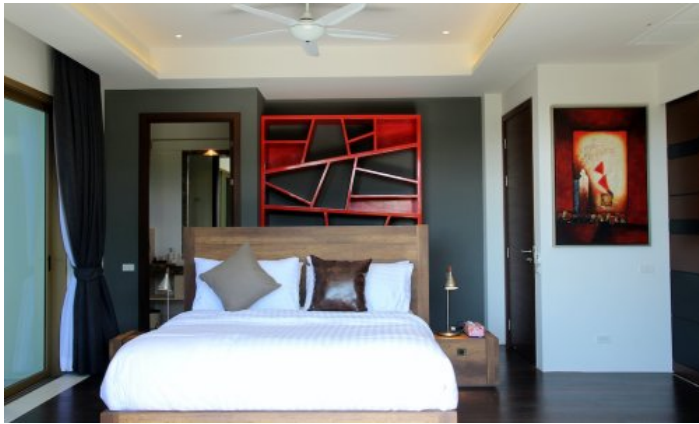


**Price 29 000 000 THB (0 USD)**

<b>Deal type</b>	Sale	<b>Land area, m<sup>2</sup></b>	400
<b>Property type</b>	Villa	<b>View</b>	Sea View, Mountain View
<b>Stage</b>	Under construction	<b>Floors</b>	2
<b>Completion date</b>	2023	<b>Furniture</b>	Furnished
<b>To the beach, m</b>	1100	<b>Listed by</b>	Private person
<b>Bedrooms</b>	3	<b>Ownership</b>	Foreign Freehold
<b>Bathrooms</b>	4	<b>Land ownership</b>	Leasehold
<b>Total area, m<sup>2</sup></b>	360	<b>Title deed</b>	Chanote
<b>Price per sqm</b>	80 555 THB		







### Off-plan villa in Vista Del Mar

Vista Del Mar is a unique and exclusive complex of villas in Phuket with stunning sea views and private pools. In a prime location surrounded by pristine rainforest, on rolling hills overlooking Knighton Beach. The project site is located at an altitude of 30-70 meters above sea level, offering magnificent views of the sea, mountains and sunset from each villa. The villas are built on two floors, ranging from 300 to 650 sq.m. Two and four-bed rooms. On the upper floor there is a dining room, kitchen, living room, bedroom. The lower floor has 2 or 3 bedrooms, all with en suite bathrooms. Swimming pool 12 × 4. Large pool terrace with barbecue. Covered parking for 2 cars.

### **Infrastructure**

The complex is under round-the-clock security.

### **What's nearby**

The villa complex is located a 2-minute drive from Naithon Beach, one of the most beautiful and tranquil beaches in Phuket. A gracefully curved bay, soft white sand and ideal water temperatures will be at your disposal 24 hours a day. Just imagine how convenient it is, because you no longer have to waste precious time on the road to the sea. The desire to bathe will be immediately realised. The ocean will become your faithful companion throughout the rest, opening up all its potential in front of you! The entire tourist infrastructure, such as massage, shops, markets, cafes, restaurants and bars is located along the first coastline, you can reach any of these locations in a maximum of 10 minutes on foot.

The complex is conveniently located just 10 minutes from Phuket International Airport and 15 minutes from 4 world famous golf clubs. At a distance of 10-15 minutes by car, there are 4 large supermarkets: Makro, Tesco Lotus, Villa Market and Porto de Phuket. And also the world famous resort Laguna Phuket.

### **Who suits**

The project is ideal for you if you prefer a measured beach vacation and clear sea to night parties and noisy crowds of tourists. A great vacation for families with children.