

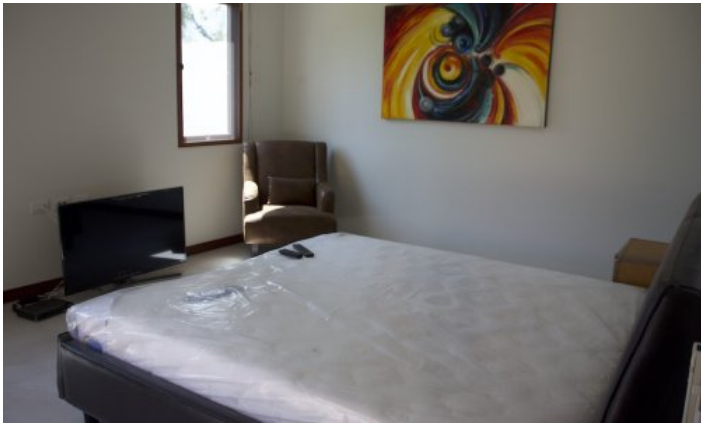
ID5488 COZY, LARGE 3-BEDROOM VILLA, WITH POOL VIEW IN CHERNG LAY VILLAS & CONDO PROJECT, ON BANGTAO/LAGUNA BEACH



Price 30 000 000 THB (0 USD)

Deal type	Sale	Price per sqm	60 000 THB
Property type	Villa	Land area, m²	950
Stage	Completed	View	Pool view, Urban View, Mountain View, Garden view
Completion date	2010	Floors	3
To the beach, m	3000	Furniture	Furnished
Bedrooms	3	Listed by	Private person
Bathrooms	3	Ownership	Foreign Freehold
Total area, m²	500	Land ownership	Leasehold





The project, consisting of villas and apartments, was built in the heart of Laguna Phuket Resort in 2010 and is still a popular holiday destination for visitor of Phuket. There are 8 villas and 9 apartments in the project. 3 and 4 bedroom villas with private pools and parking. The concept of the project is to provide a relaxing atmosphere and feel at home. The developer has developed a plan for the one-story villas in order to provide you with the complete privacy of your home in Phuket.

Infrastructure

The territory has a communal pool and 24-hour security.

What's nearby

The complex is located a 5-minute drive from Bangtao Beach. This beach is where Phuket's most popular beach clubs are located, such as Xana Beach Club, Dream Beach Club and Catch Club. A 2-minute drive is located Blue Tree - this is a large entertainment complex, which includes: the actual lagoon of the water park with various attractions on water and land, several large parking lots, a helipad, a kids club, a fitness area, a shopping center, restaurants and mobile food tents. Blue Tree Water Park opened its doors in the fall of 2019 in the north of the island, not far from Bangtao Beach. And he is already one of the top attractions in Phuket. The park is suitable for visitors of all ages, especially children. An active day for the whole family is guaranteed! Within walking distance from the complex there is a shopping complex Boat Avenue with many shops, countless restaurants and bars, a supermarket of European products Villa Market. The modern Porto De Phuket shopping complex, with countless restaurants, Tors supermarket, boutiques and food court, is just a short drive away. Nearby is the Lemonade Kids Club with a children's room and a pool for children, a hot sauna for adults. The bustling party scene of Patong is a 30-minute drive from the complex. The road from the airport to the complex will take about 25 minutes.

For whom is it suitable

This project is ideal for couples and families with children.