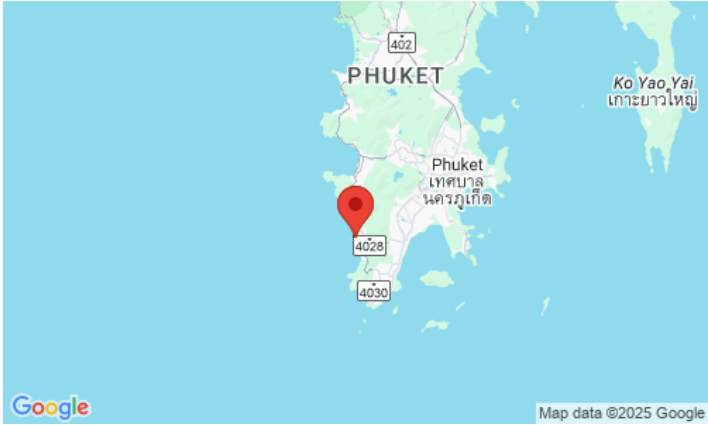


ID5538 FASHIONABLE 2-BEDROOM APARTMENTS, WITH SEA VIEW AND NEAR THE SEA IN ASPASIA PROJECT, ON KATA BEACH

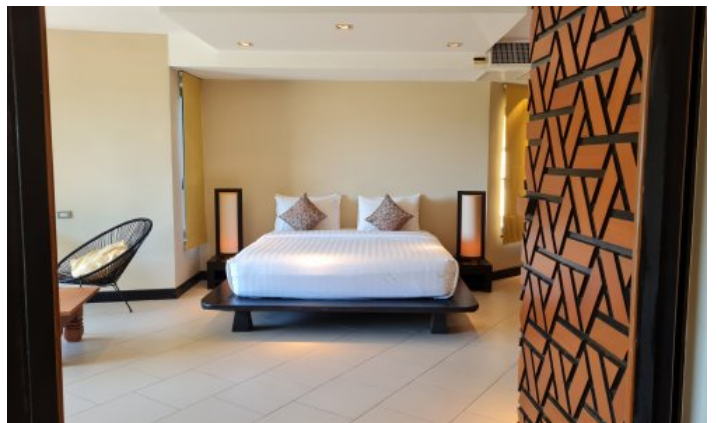
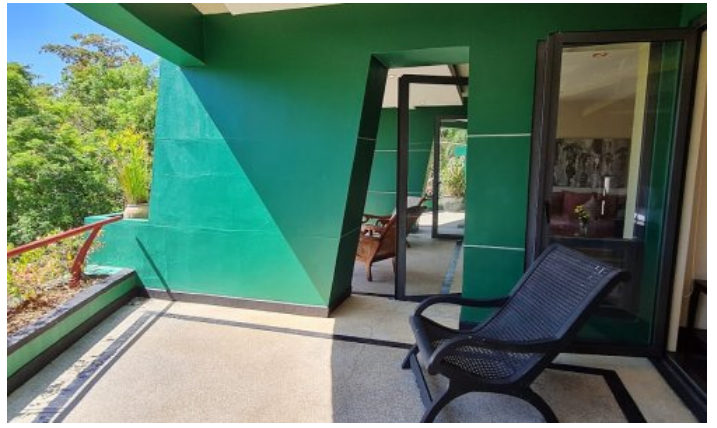


Deal type	Rent	Bathrooms	2
Property type	Apartments	Total area, m <sup>2</sup>	240
Stage	Completed	View	Sea View, Pool view, Mountain View, Garden view
Completion date	2004	Floor	2
To the beach, m	100	Floors	5
Bedrooms	2	Furniture	Furnished
Guests	4	Listed by	Private person

Periods	Day, THB	3 Days, THB	Week, THB	2 Weeks, THB	Month, THB
-	0	0	0	0	0







Aspasia is a stylish boutique resort that reflects an unusual retro-deco design with a touch of Mayan architecture. Each spacious apartment has a wonderful sea view. Relaxed atmosphere, spacious apartments and stunning ocean views. The apartments have a kitchen equipped with a microwave, electric kettle, dishwasher and refrigerator.

**Infrastructure**

Just five minutes walk to the white sandy Kata Beach below and the entire infrastructure of the beach with restaurants, bars, massage parlours and shops. The hotel has 55 apartments, including 24-hour security and reception, swimming pool, fitness center and restaurant.

**What's nearby**

The hotel is located in a separate bay, Kata Yai, in the south of Phuket. It is easy to find souvenir shops, a variety of restaurants, cafes, bars, massage parlours and small shops where you can buy clothes, bags and essentials nearby. Kata Beach is the island's most popular surfer destination. Not far from the beach there is an attraction Kata Surf House, where you can learn to stand on a board using a special simulator that creates a wave. To the airport 56 kilometers, to Patong 15 kilometers, to Phuket 23 kilometers.

**For whom is it suitable**

Spacious and comfortable rooms. Friendly staff and great service. Suitable for family vacations.