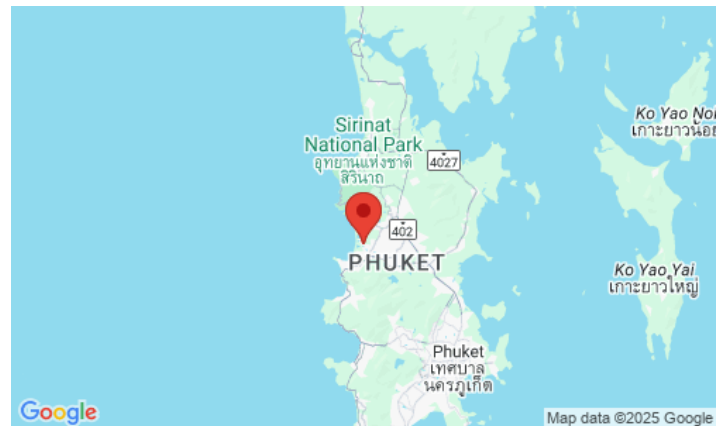
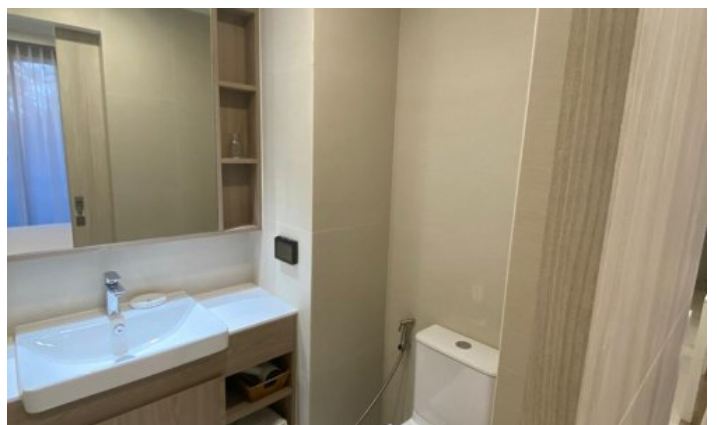
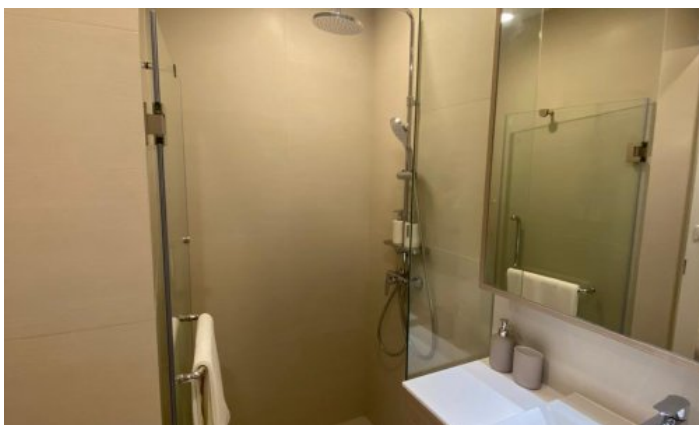


## ID5821 LUXURIOUS 2-BEDROOM APARTMENTS, WITH URBAN VIEW IN SKY PARK PROJECT, ON BANGTAO/LAGUNA BEACH ( + VIDEO REVIEW)



<b>Deal type</b>	Rent	<b>Bathrooms</b>	2
<b>Property type</b>	Apartments	<b>Total area, m<sup>2</sup></b>	43
<b>Stage</b>	Completed	<b>View</b>	Urban View, Garden view
<b>Completion date</b>	2021	<b>Floors</b>	7
<b>To the beach, m</b>	600	<b>Furniture</b>	Furnished
<b>Bedrooms</b>	2	<b>Listed by</b>	Private person
<b>Guests</b>	4		

Periods	Day, THB	3 Days, THB	Week, THB	2 Weeks, THB	Month, THB
-	0	0	0	0	0





SkyPark is a new condominium project from Laguna Phuket, a modern residential complex consisting of three 7-storey buildings will be built on a golf course in the heart of Laguna Phuket Resort. The condominium features studios, 1-bedroom and two-bedroom apartments. Each unit has a living room, dining room and kitchen, as well as balconies to enjoy the breathtaking views of the tropical nature. The V-shaped buildings enhance views of the golf course and the Laguna and provide functional outdoor spaces. Property owners may enjoy the entire infrastructure of the huge Laguna Phuket Resort, receiving privileges in the form of discounts in restaurants, spas and boutiques of the resort.

### **Infrastructure**

Owners can enjoy exclusive access to rooftop recreational facilities. The buildings of the complex are connected by elevated bridges to form a large Sky Park surrounded by greenery, lagoon and ocean views. A rooftop infinity pool with panoramic views and a unique jogging track keep residents and guests healthy. A free shuttle bus runs regularly from the complex to the beach and back. The restaurant offers in-villa or BBQ catering. Each building will have a cozy, modern lobby, public seating and co-working areas, and a spacious laundry room. There will also be a gym and parking on site.

### **What's nearby**

The project is located just 5 minutes walk from Bangtao Beach. This beach is where Phuket's most popular beach clubs are located, such as Xana Beach Club, Dream Beach Club and Catch Club. Nearby is the Laguna Phuket Golf Club, which hosts international class tournaments. Inexperienced golfers can use the services of a personal golf coach. Boat Avenue is a 2-minute drive from the Cassia, with a variety of shops, countless restaurants and bars, and Villa Market, a European supermarket. The modern Porto De Phuket shopping complex, with countless restaurants, Tors supermarket, boutiques and food court, is just a short drive away. Nearby is the Lemonade Kids Club with a children's room and a pool for children, a hot sauna for adults. The bustling party scene of Patong is a 30-minute drive from the complex. The road from the airport to the complex will take about 25 minutes.

### **For whom is it suitable**

Located in one of the most prestigious areas of Phuket with developed infrastructure, but at the same time it will be a fairly inexpensive option for living in comparison with neighbouring hotels. Therefore, the project is popular with many categories of tourists and expats who value quality of life and good location. By renting or purchasing a property in Laguna Phuket, you and your home acquire the style, lifestyle and privileges of a resident of the most prestigious Asian resort.