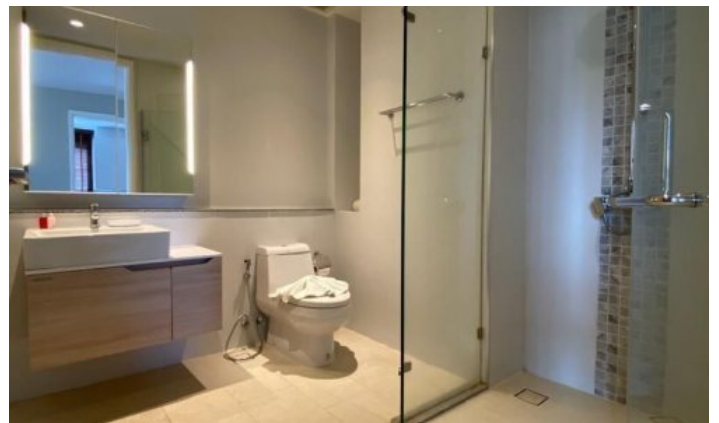


ID5971 AMAZING 2-BEDROOM APARTMENTS, WITH GARDEN VIEW IN DIAMOND CONDOMINIUM PROJECT, ON BANGTAO/LAGUNA BEACH



Deal type	Rent	Bathrooms	2
Property type	Apartments	Total area, m²	75
Stage	Completed	View	Garden view
Completion date	2017	Floors	7
To the beach, m	600	Furniture	Furnished
Bedrooms	2	Listed by	Private person

Periods	Day, THB	3 Days, THB	Week, THB	2 Weeks, THB	Month, THB
01.04 - 31.10	6 900	30 000	65 000	115 000	200 000
01.11 - 20.12	9 000	27 000	58 500	103 500	180 000
21.12 - 10.01	9 600	28 800	62 400	110 400	192 000
11.01 - 30.04	9 000	27 000	58 500	103 500	180 000



Diamond Condominium is an exclusive complex located next to the famous Bangtao Beach on the west coast of Phuket. The complex consists of 295 innovative styled 1-2 bedroom apartments and 2-4 bedroom penthouses including gourmet kitchens, luxury bathrooms and spacious private terraces overlooking 2000 sq. m. resort tropical landscape design and water area.

Infrastructure

The territory has an Olympic-size swimming pool, tropical park, fitness center, sauna, restaurant, shop on the territory of the complex will make your stay in Phuket carefree and unforgettable.

What's nearby

Ideal location, 5 minutes walk from Bangtao Beach. Within walking distance from the complex are Siam Blue & Catch beach club, Tesco lotus express. Also, the rich resort infrastructure of the Bang Tao area includes shops, restaurants, bars, spa centers, a kids club, a center, a shopping center, banks.

For whom is it suitable

Diamond is located in one of the most prestigious areas of Phuket with developed infrastructure, but the cost of housing is relatively low. Therefore, the project is suitable for all those who prefer a measured rest surrounded by beautiful landscapes. Diamond is loved by everyone, from young families with children to elderly people.