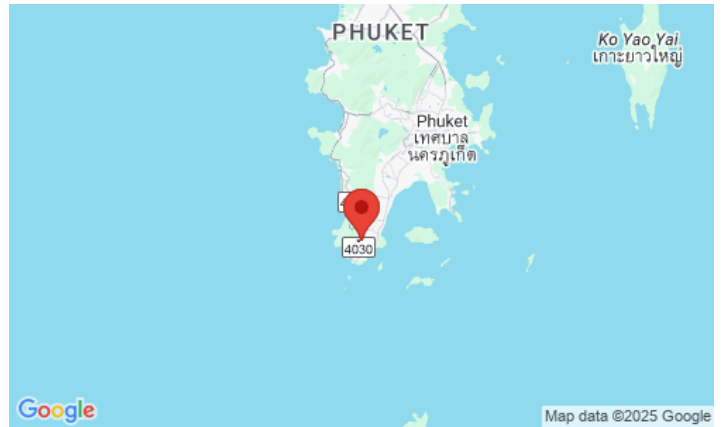


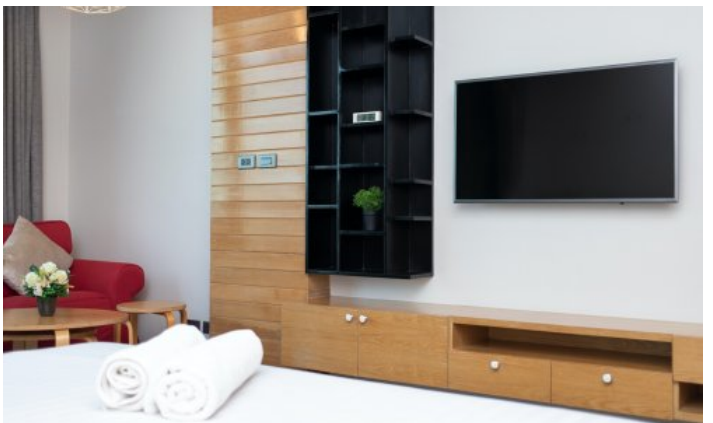
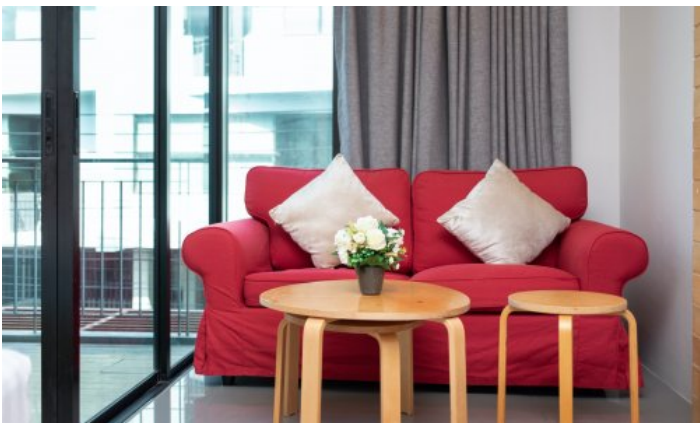
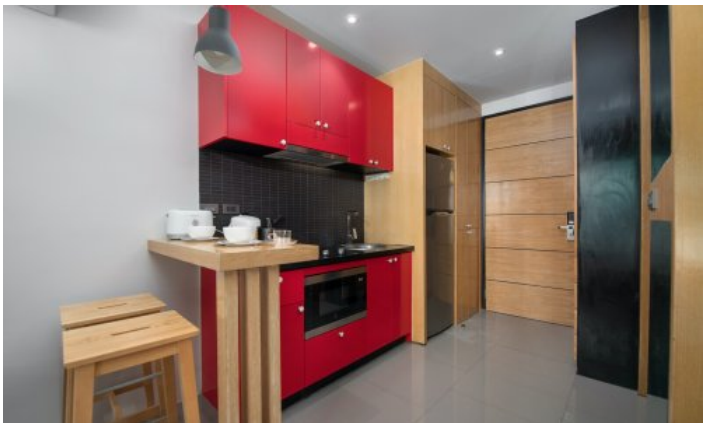
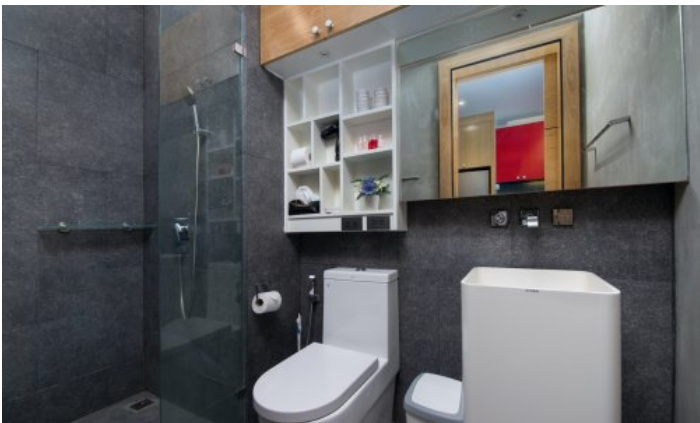
## ID6088 AMAZING STUDIO APARTMENTS, WITH URBAN VIEW IN RE LIFE PROJECT, ON NAI HARN BEACH



**Price 3 200 000 THB (0 USD)**

Deal type	Sale	Price per sqm	88 888 THB
Property type	Apartments	View	Urban View, Mountain View
Stage	Completed	Floor	2
Completion date	2016	Floors	5
To the beach, m	500	Furniture	Furnished
Bedrooms	Studio	Listed by	Private person
Bathrooms	1	Ownership	Leasehold
Total area, m <sup>2</sup>	36		





Relife The Windy condominium is located in the south of Phuket, 800 meters from Nai Harn Beach and 10 minutes from Rawai. The project includes two buildings: Relife Condo and Relife The Windy Condominium, which are opposite each other. The first building was commissioned in 2016 and has been popular with tourists for several years. On the territory of the condominium there is a swimming pool with a children's area and sun loungers, a gym, a restaurant, a lobby building, parking. The complex has several layout options for studio apartments, 1 and 2-bedroom apartments. Areas from 30 sq.m. to 58 sq.m.

ReLife The Windy Condominium is a seven-story building, 120 one-bedroom apartments in a Japanese loft style. Apartments ranging from 31 to 49 sq.m. There are several types of apartments in the condominium. Most of them overlook the garden and the surrounding area. Each apartment has a full kitchen, balcony, living-dining area, and a large bathroom. The interior is designed by designers in a modern style - Japanese loft. Built-in furniture made in Japanese style from New Zealand pine. The complex has two swimming pools. One with a sitting area downstairs and a second pool-bar with sun loungers and umbrellas on the roof of the building.

### **Infrastructure**

24-hour security, reception area, swimming pools with a relaxation area with sun loungers, underground parking, gym.

### **What's nearby**

The complex is well located in relation to the entire tourist infrastructure of the Naiharn and Rawai areas. Within walking distance of cafés and restaurants, round the clock mini markets, massage parlours, laundries. One of the best beaches - Naiharn is located a kilometre from the project. The beach is popular with families with children and expats, so you will not find a large crowd of tourists here. A stone's throw from the beach, there is a freshwater lake and an observation deck with windmills. Nai Harn Beach is popular with families with children, as well as with winterers and long-livers of the island. It is comfortable to spend your vacation here, because Nearby there are many restaurants of both European and national Thai cuisine. There are also offices with transport rental and excursion services. For a long stay on Naiharn, it is comfortable to live for families with children - there are international and Thai kindergartens, international and Russian schools nearby. The way from Naiharn to the popular children's play complex "Rawai Park" will take 5 minutes by car or bike. Naiharn is also often chosen for yoga tours or sports camping. At Naiharn and in the neighbouring Rawai district, there are gyms, specialized rings for Thai boxing and workout grounds. Within a 7-10 minute drive there is a Macro hypermarket, a supermarket with European products Villa Market, a fish market.

### **Who suits**

The complex is suitable for families with children and the category of tourists who prefer active recreation. Also, due to the availability of the beach and tourist infrastructure, it will be comfortable here for those who prefer not to take a vehicle for the duration of their holiday.