

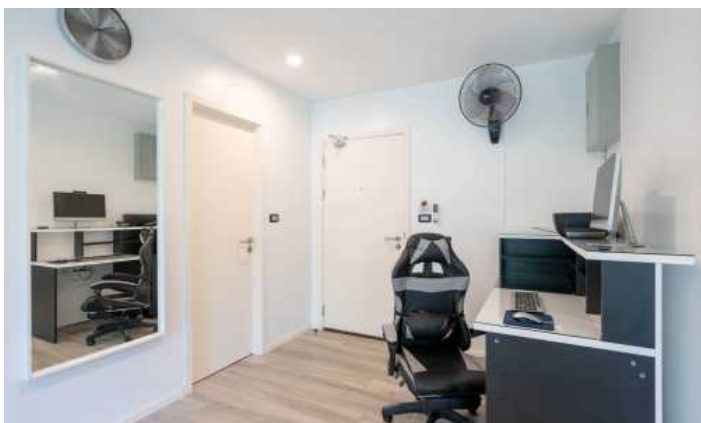
ID6315 LUXURIOUS 2-BEDROOM APARTMENTS, WITH POOL VIEW IN THE TITLE RESIDENCIES NAIYANG PROJECT, ON NAI YANG BEACH



Price 6 200 000 THB (181 970 USD)

Deal type	Sale	Price per sqm	86 111 THB
Property type	Apartments	CAM Fees per month	2 385 THB
Stage	Completed	View	Pool view
Completion date	2018	Floors	7
To the beach, m	350	Furniture	Furnished
Bedrooms	2	Listed by	Private person
Bathrooms	2	Ownership	Leasehold
Total area, m²	72	Title deed	Chanote





Introducing an exquisite 72m2 two-bedroom corner unit strategically designed for privacy and tranquility. This meticulously crafted off-plan residence has just completed intensive renovations, featuring fresh paint and an array of brand-new additions. The highlight is a custom-made kitchen, equipped with a sleek 4-burner glass top electric hob and oven. The kitchen boasts high-quality quartz stone countertops, offering ample storage space with carefully designed drawers and cupboards. The durable 15mm ply construction ensures longevity, and its pristine white finish exudes elegance that will stand the test of time. The kitchen also includes a brand-new microwave and a stylish fridge that perfectly complements the overall aesthetic.

Imagine enjoying breathtaking views of the mesmerizing waterfall pool and serene nature while dining with loved ones. This unit showcases a unique American-style booth seating arrangement, expertly crafted from the finest materials. Durability, style, and longevity were key considerations when designing this custom-made booth.

Accompanying the booth is a meticulously crafted Z-shaped table, adding a whimsical touch to the space, reminiscent of a fragment from a passing comet.

As you enter the spacious living room, you'll be greeted by an L-shaped sofa adorned with sleek white PU leather upholstery. The newly installed feature wall elegantly accommodates the television, serving as the focal point of the living area. Even when you're not engrossed in your favorite shows, you can enjoy the captivating view of the waterfall pool from the comfort of your lounge. A well-fitted desk is conveniently located nearby, offering a productive workspace for your computer tasks.

For added convenience and versatility, the sofa and booth seats come with a set of black and white covers. These covers are perfect for families with children or if you plan to rent out the unit, ensuring the protection and longevity of these lovely seating areas.

Indulge in the enchanting master bedroom, where a newly added feature wall sets the stage for ultimate tranquility and style. Relax on the luxurious king bed while enjoying entertainment on the second TV. The view of the swaying coconut tree tops adds a touch of nature to this serene oasis. The master bedroom also features an elegant en-suite with a window that welcomes in natural light, creating a soothing ambiance.

The second bedroom offers a thoughtfully crafted custom bunk bed, designed for comfort and functionality. With a 3-foot wide top bunk and a 3-foot 6-inch wide bottom bunk, this space provides ample sleeping space for up to three people. Enjoy captivating views of the pool from this cozy retreat. Strategically placed light switches, plugs, and chargers ensure convenience, eliminating the need to get up to adjust the lighting. The adjoining bathroom adds an extra layer of privacy and convenience to this delightful space.

Without a doubt, this unit stands out as one of the finest at The Title, not only for its impeccable layout but also for its prime positioning, offering a stunning long view across the waterfall pool and the surrounding nature. Don't miss the opportunity to own this extraordinary property that combines luxury, style, and tranquility in one remarkable package. The Title Nai Yang is a modern resort complex, which consists of seven buildings of 6 and 7 floors and has 472 apartments: studios 36-39m2, one-bedroom apartments with an area of 46m2 or two bedrooms, the territory of the complex itself is fenced and is under 24-hour video surveillance and security ... The concept of the project and design is somewhat unusual for Thailand, the complex is decorated with red brick, and it looks more like a medieval castle than a modern Asian condominium. The apartments have a comfortable layout, in light grey and blue colours. The common area is a beautiful, well-groomed recreation park, a river flows along the buildings, which gives the project a certain charm and beauty of the fusion of modern urban architecture with nature.

Infrastructure

The complex has its own restaurant, which serves breakfast, lunch and dinner a-la carte. Each building has access to a communal pool and well-kept garden. 5 swimming pools in each building are located on the 1st floor, and the sixth is on the roof of one of the buildings. There is a recreation area on the same roof. The complex offers a free gym, two saunas, a reception, a play area for children in the form of a pirate ship. Parking for 240 cars is organized on the south side of the building and is separated by green spaces and a fence.

What's nearby

The complex blends in perfectly with the tropical environment, and walking to the beach is a real pleasure. Just 5 minutes, and you will find yourself on one of the most stunning beaches in Phuket - Nai Yang. A small, cosy beach with a length of just under 3 kilometres, the water area of which is protected by coral reefs, will allow you to enjoy swimming in the sea all year round, regardless of the season. Since 1986, this beach has been part of the Sirinath National Park Marine Park and all motor sports are prohibited on it. There is a large selection of restaurants, bars and cafés along the beach. The Title project itself separates the famous 5 * hotel The Slate from the beach with excellent gourmet restaurants. A five-minute walk is a local grocery market and mini markets.

Who suits

The proximity to the sea and low prices make this project one of the most attractive on the island. And the peculiarity of the Nai Yang beach, on which there are never waves, even in low season, makes the project popular all year round. The entrance to the water is very shallow, so the beach is loved by families with small children. The low cost of

apartments, both for rent and for purchase, makes the project accessible to everyone.