

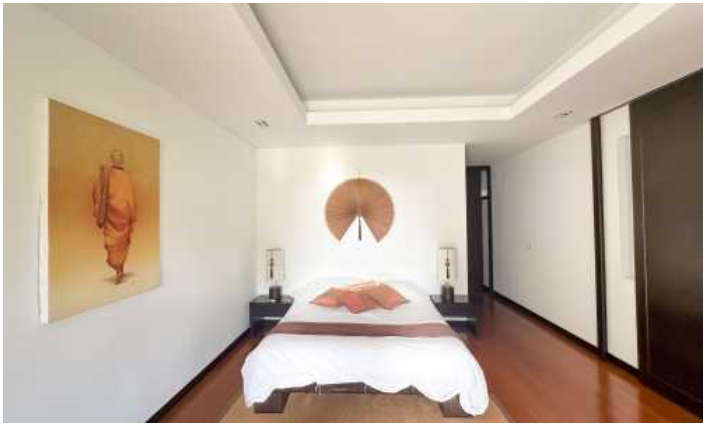
ID6377 ASTONISHING 3-BEDROOM APARTMENTS, WITH POOL VIEW IN MANDALA CONDOMINIUM PROJECT, ON BANGTAO/LAGUNA BEACH (+ VIDEO REVIEW)



Deal type	Rent	Bathrooms	3
Property type	Apartments	Total area, m²	270
Stage	Completed	View	Pool view, Garden view
Completion date	2011	Floors	3
To the beach, m	350	Furniture	Furnished
Bedrooms	3	Listed by	Private person
Guests	5		

Periods	Day, THB	3 Days, THB	Week, THB	2 Weeks, THB	Month, THB
01.05 - 31.10	8 000	24 000	52 000	92 000	160 000
01.11 - 30.11	13 000	39 000	84 500	149 500	260 000
01.12 - 31.01	0	0	0	0	380 000
01.02 - 30.04	13 000	39 000	84 500	149 500	260 000





Baan Mandala is a luxury complex of 3 buildings, 3 floors. It consists of 16 apartments with their own pools, 2 penthouses. The project won the Thailand Property Awards for Best Phuket Condominium in 2010. Outstanding design - the perfect blend of antiquity and modernity. It is furnished with sturdy furniture from the best brands. The interior is focused on creating a functional living space.

Infrastructure

The infrastructure of the complex includes a reception, recreation area, gym, library, parking, round the clock security, etc.

What's nearby

Ideal location, 5 minutes walk from Bangtao Beach. Within walking distance from the complex are Siam Blue & Catch beach club, Tesco Lotus express. Also, the rich resort infrastructure of the Bang Tao area includes shops, restaurants, bars, spa centres, a kids club, a centre, a shopping centre, banks.

For whom is it suitable

Baan Mandala is located in one of the most prestigious areas of Phuket with developed infrastructure. Therefore, the project is suitable for all those who prefer a measured rest surrounded by beautiful landscapes. The apartment will suit absolutely everyone.