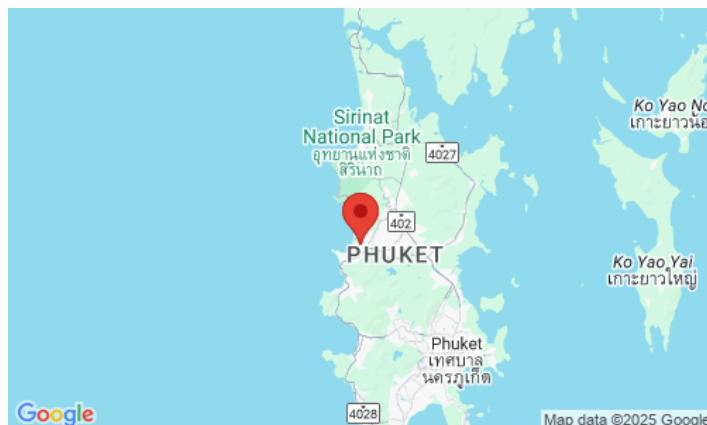
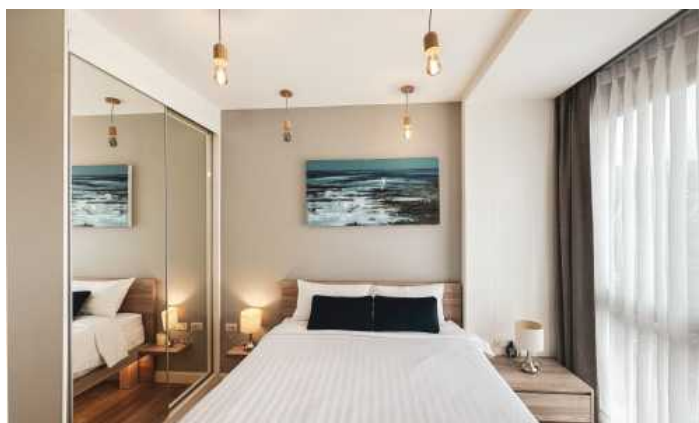
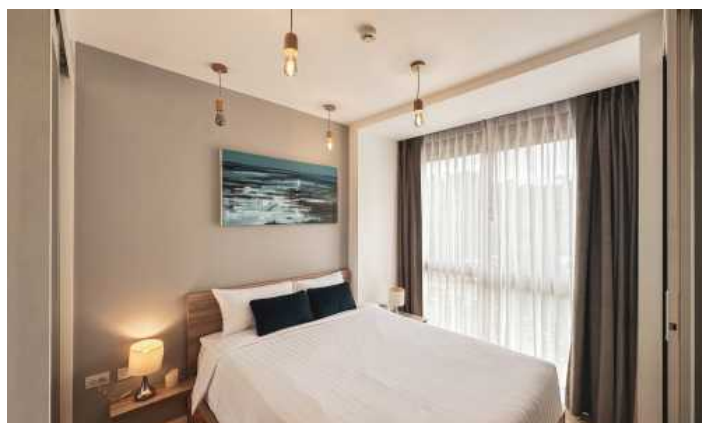


## ID6412 STYLISH 1-BEDROOM APARTMENTS, WITH URBAN VIEW IN DIAMOND CONDOMINIUM PROJECT, ON BANGTAO/LAGUNA BEACH



<b>Deal type</b>	Rent	<b>Bathrooms</b>	1
<b>Property type</b>	Apartments	<b>Total area, m<sup>2</sup></b>	33
<b>Stage</b>	Completed	<b>View</b>	Urban View
<b>Completion date</b>	2017	<b>Floor</b>	2
<b>To the beach, m</b>	600	<b>Floors</b>	7
<b>Bedrooms</b>	1	<b>Furniture</b>	Furnished
<b>Guests</b>	3	<b>Listed by</b>	Private person

Periods	Day, THB	3 Days, THB	Week, THB	2 Weeks, THB	Month, THB
01.12 - 31.01	7 500	22 500	48 750	86 250	180 000
01.02 - 30.03	4 500	13 500	29 250	51 750	90 000
01.04 - 30.05	3 750	11 250	24 375	43 125	75 000
01.06 - 30.08	2 500	7 500	16 250	28 750	50 000
01.09 - 31.10	3 750	11 250	24 375	43 125	75 000
01.11 - 30.11	4 500	13 500	29 250	51 750	90 000





Diamond Condominium is an exclusive complex located next to the famous Bangtao Beach on the west coast of Phuket. The complex consists of 295 innovative styled 1-2 bedroom apartments and 2-4 bedroom penthouses including gourmet kitchens, luxury bathrooms and spacious private terraces overlooking 2000 sq. m. resort tropical landscape design and water area.

**Infrastructure**

The territory has an Olympic-size swimming pool, tropical park, fitness center, sauna, restaurant, shop on the territory of the complex will make your stay in Phuket carefree and unforgettable.

**What's nearby**

Ideal location, 5 minutes walk from Bangtao Beach. Within walking distance from the complex are Siam Blue & Catch beach club, Tesco lotus express. Also, the rich resort infrastructure of the Bang Tao area includes shops, restaurants, bars, spa centers, a kids club, a center, a shopping center, banks.

**For whom is it suitable**

Diamond is located in one of the most prestigious areas of Phuket with developed infrastructure, but the cost of housing is relatively low. Therefore, the project is suitable for all those who prefer a measured rest surrounded by beautiful landscapes. Diamond is loved by everyone, from young families with children to elderly people.